



## Flood Watch Somalia

Issued: November 8, 2005



**SWALIM**

### FLOOD WARNING LEVEL

	Last Week	This week	Next Week
Shabelle			
Juba			

Key To Warning Levels

Severe Flooding Possible

Moderate Flooding (up to 5 year return period)

Minimal Flood Risk

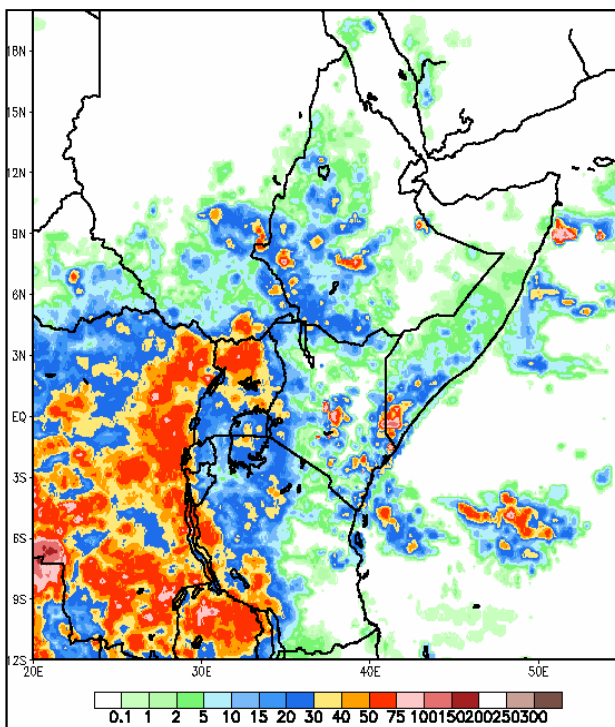
The 7-day Rainfall Estimates (RFE) for the week ending November 7th indicate that there has been sporadic rainfall on areas of the Ethiopian catchments of both the Juba and Shabelle rivers. The RFE also indicates light rainfall in Somalia on the Juba and Shabelle catchments.

The total reported catch from Bulo Burti for the last 7 days was 7mm. Rains have been reported on the Lower Shabelle around Kurtunwarrey. There has still been no rain in Luuq and Bardhere.

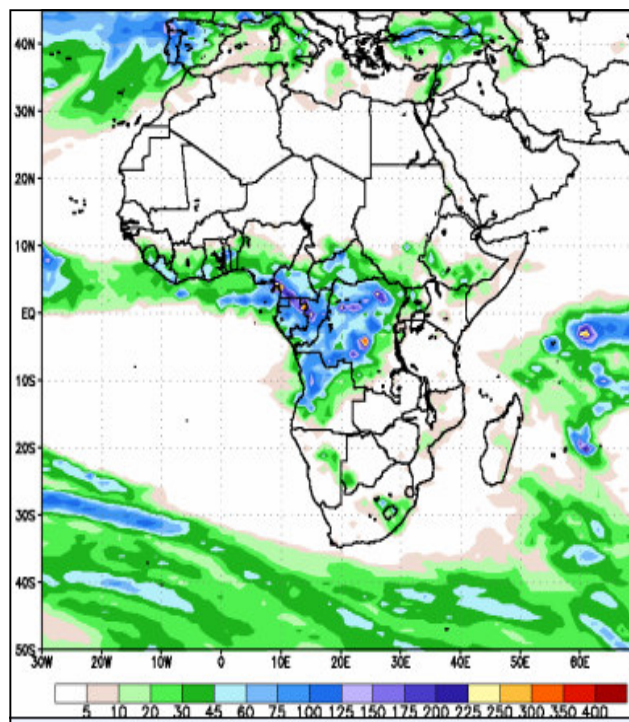
The rainfall forecast for the coming week is for up to 45 mm of rain in the Ethiopian catchments and for between 10-20 mm in the Southern Somalia.

Flood risk for the forecast period is considered minimal. However, careful monitoring of the river stages is necessary, especially on the Juba following observed rainfall in the Ethiopian highlands of Juba basin.

**Total rainfall week ending 6/11/05**



**7-Day Rainfall Forecast from 7/11/05**



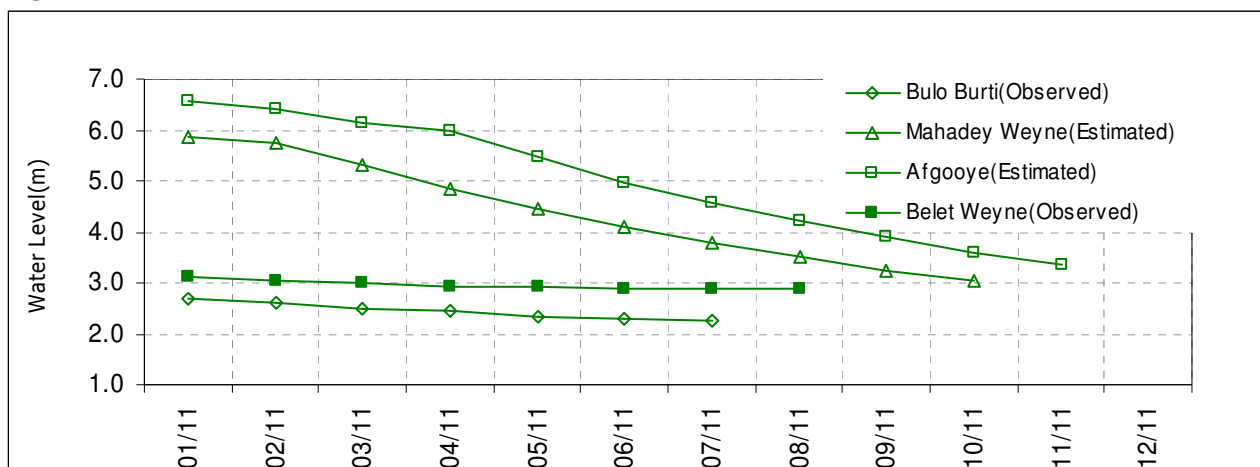
This bulletin is produced by FAO Somalia Water and Land Information Management (SWALIM) Project and USGS/FEWS NET Somalia. SWALIM and USGS/FEWS NET acknowledge Care Somalia, CINS & SCUUK for their continued assistance.

For more information e-mail [hydro@faoswalim.org](mailto:hydro@faoswalim.org)

**Shabelle**

Observed river levels at Belet Weyne remained still while observed river stage at Bulo Burti dropped gradually over the last week. There is minimal flood risk to Hiran and Middle Shabelle. Reports have been received of localised flooding on the Lower Shabelle, probably due to rains falling on irrigated land. The presence of the river barrages below Ginale make it impossible at present to predict river levels on the Lower Shabelle.

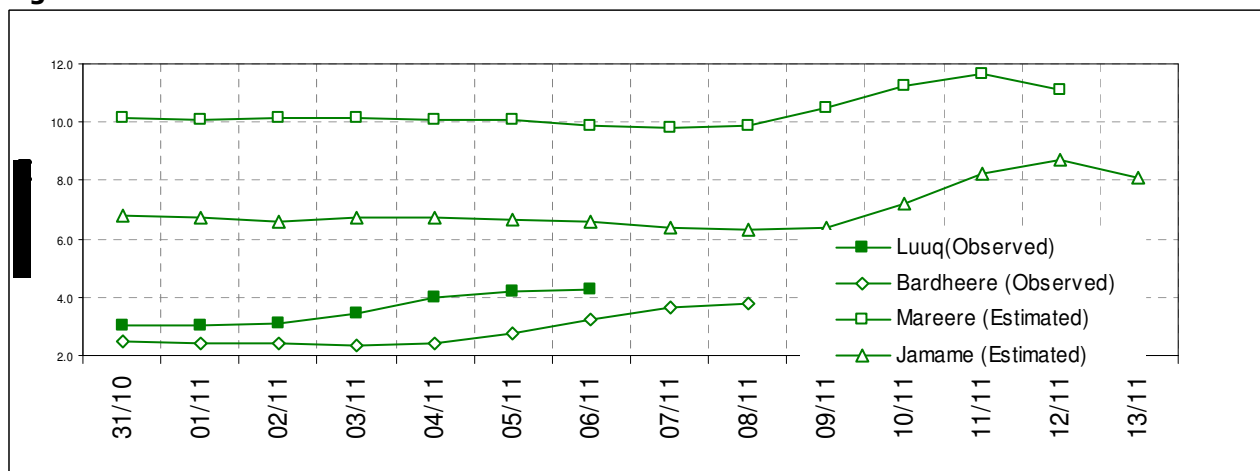
**Figure 1: Observed and Predicted water levels on Shabelle**



**Juba**

The river levels have been rising for the past four days at Luuq and Bardheere gauging stations. This rise in river stage is due to the rainfall observed in the upper Juba basin in the Ethiopian highlands, with contribution from the Dawa river, which enters Somalia around Mandeera and joins the Juba above Dolo. River levels are expected to remain below bank full levels over the forecast period, with some risk of localised flooding.

**Figure 2: Observed and Predicted water levels on Juba**



Bank full water levels					
Shabelle		Level	Juba		Level
Belet Weyne		7.0	Luuq		7.0
Bulo Burti		8.0	Bardheere		6.6
Mahadey Weyne		5.5	Mareere		10.9
Afgooye		5.8	Jamame		6.9



This bulletin is produced by FAO Somalia Water and Land Information Management (SWALIM) Project and USGS/FEWS NET Somalia. SWALIM and USGS/FEWS NET acknowledge Care Somalia, SCUUK & CINS for their continued assistance.

SWALIM is funded by The European Union. USGS is funded by OFDA—USAID. FEWS NET is funded by USAID.