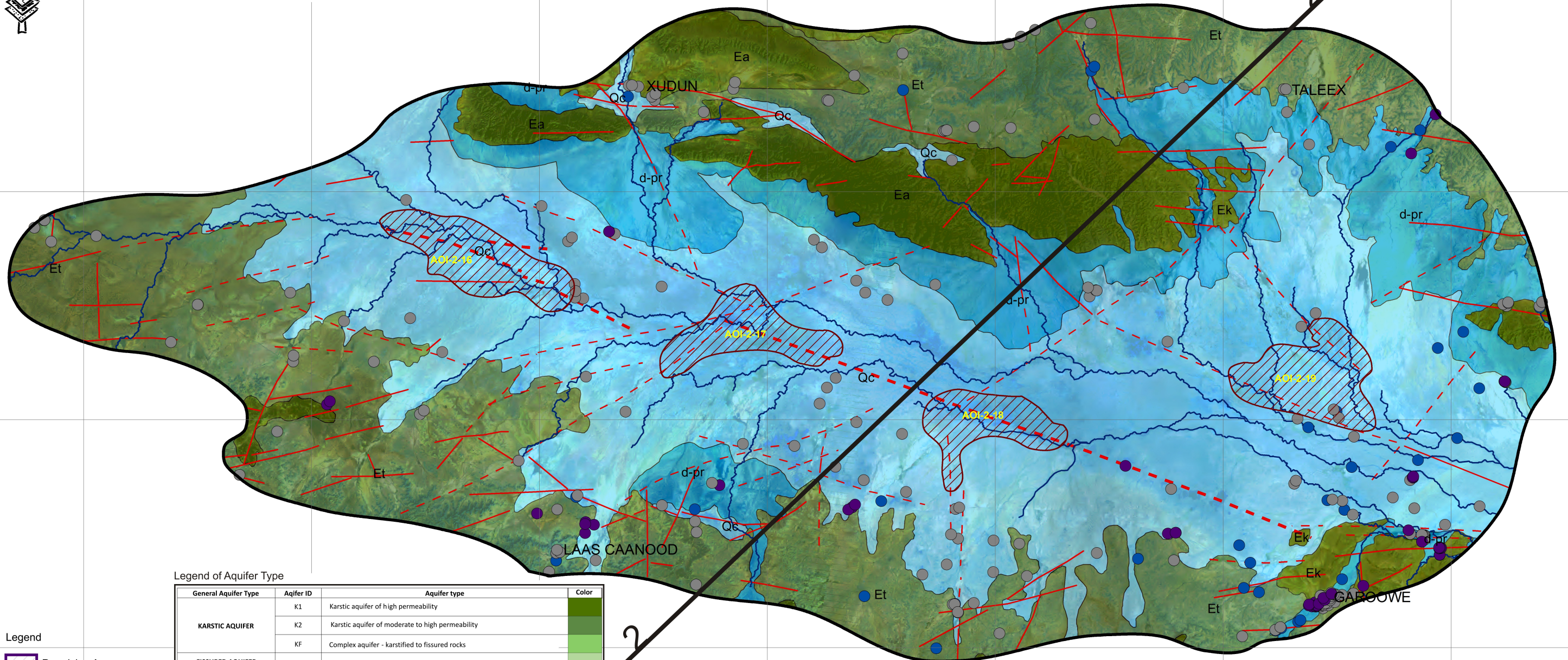


Annex IV - HYDROGEOLOGICAL MAP OF AOI 2



Legend of Aquifer Type

General Aquifer Type	Aquifer ID	Aquifer type	Color
KARSTIC AQUIFER	K1	Karstic aquifer of high permeability	Dark Green
	K2	Karstic aquifer of moderate to high permeability	Medium Green
	KF	Complex aquifer - karstified to fissured rocks	Light Green
FISSURED AQUIFER	F	Fissured aquifer, well fractured and permeable rocks	Light Blue
INTERGRANULAR AQUIFER	I1	Intergranular aquifer of high permeability	Dark Blue
	I2	Intergranular aquifer of moderate permeability	Medium Blue
	I3	Intergranular aquifer of low permeability	Light Blue
AQUITARD TO AQUICLUDE	A	Aquifer of low permeability to completely impermeable rocks	Orange
NON AQUIFER	N	Non-permeable rocks, hydrogeological barrier	Brown

Legend

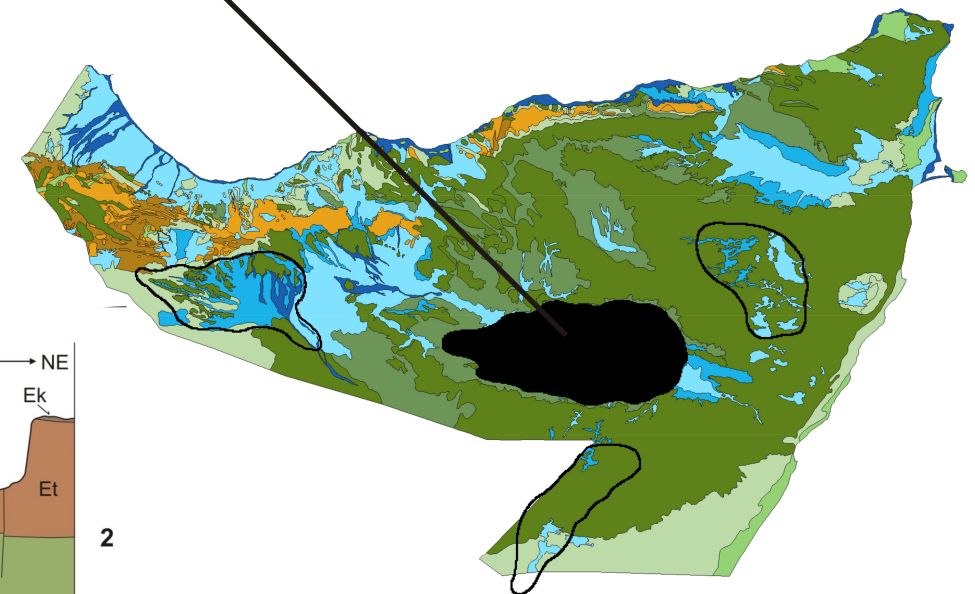
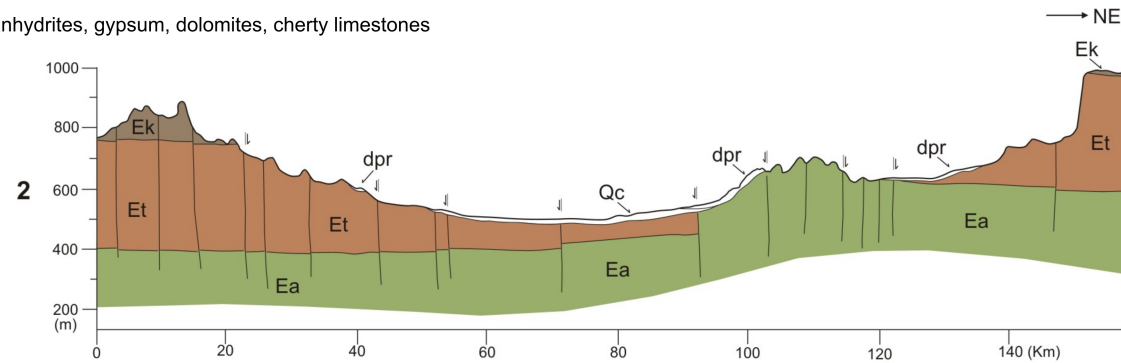
- Promising Area
- Drilled well
- Dug well
- Spring
- Drainage network
- Faults**
- Certain, Local
- Approximated, local
- Certain, regional
- Approximated, regional

Legend of Litho-Stratigraphical Units

- d-pr** Deluvial-proluvial sediments deposited at the foothills, and basins slopes often create of large thick blanket of unsorted heterogeneous material.
- Qc** Re-deposited sediments, red soil, continental carbonate crust, laterites. Heterogeneous lithology often well cemented and poorly permeable rocks
- Ea** Auradu limestones: limestones with corals and intercalations of marls and cherts
- Et** Taleh (Taleex) evaporites: anhydrites, gypsum, dolomites, cherty limestones and shales

Surface of promising areas of Area of Interest 2.

ID Promising Area	Surface of area in km ²
AOI-2-16	249.7
AOI-2-17	203.6
AOI-2-18	181
AOI-2-19	259.9



0 15 30 60 Kilometers