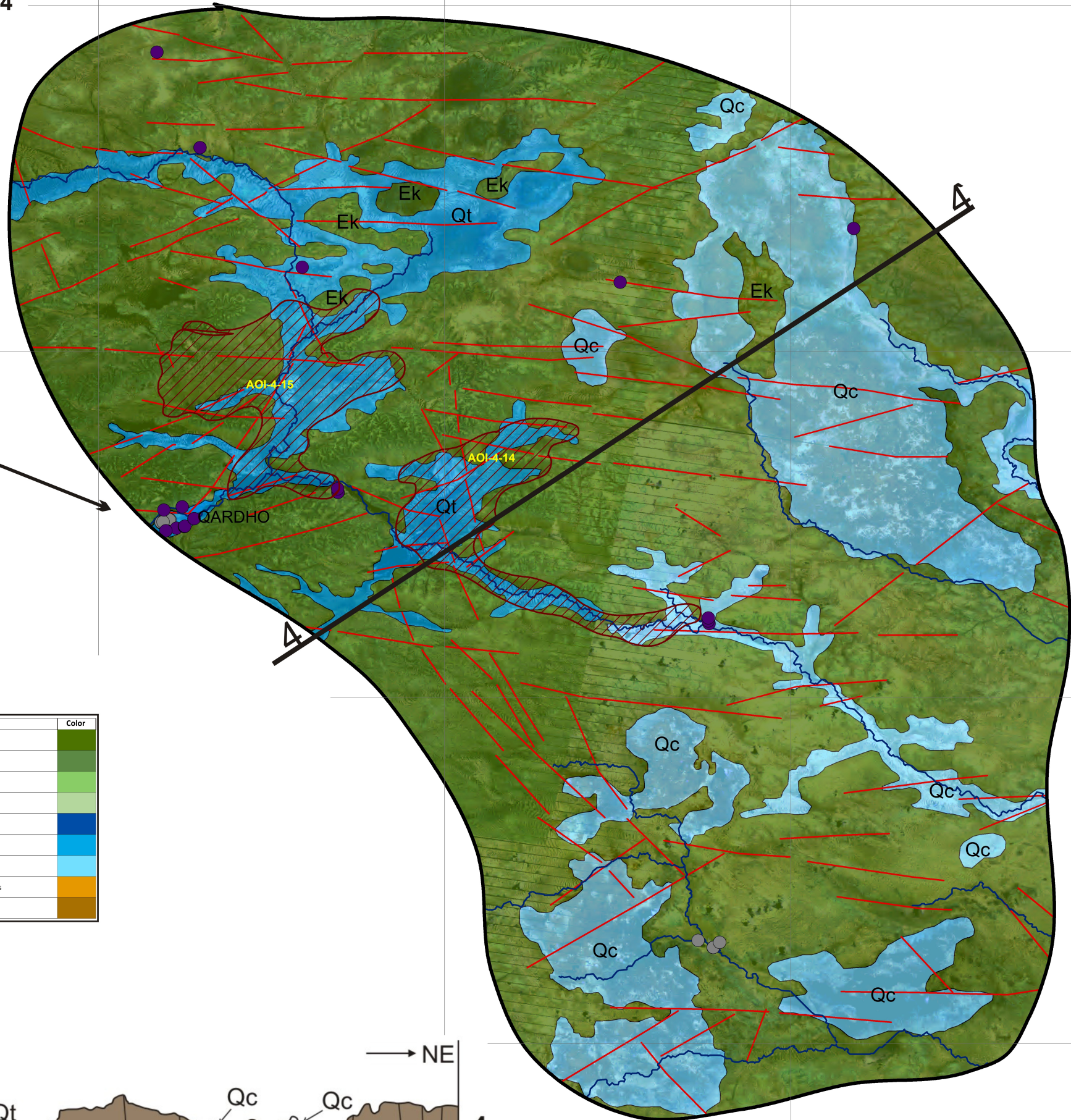
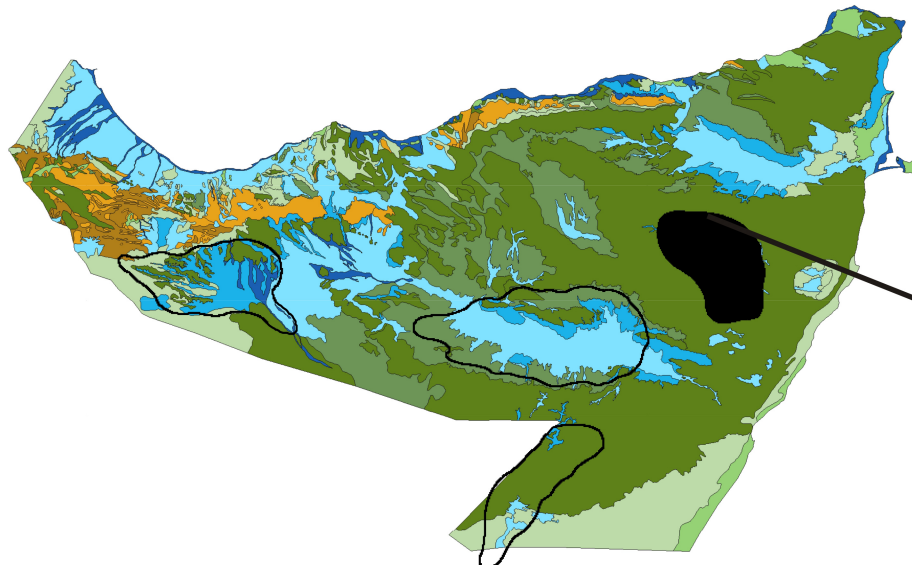


Annex VI - HYDROGEOLOGICAL MAP OF AOI 4



- Legend**
- Promising Area
 - Drilled well
 - Dug well
 - Spring
 - Drainage network
 - Faults**
 - Certain, Local
 - Approximated, local
 - Certain, regional
 - Approximated, regional

Legend of Aquifer Type

General Aquifer Type	Aqifer ID	Aquifer type	Color
KARSTIC AQUIFER	K1	Karstic aqifer of high permeability	
	K2	Karstic aqifer of moderate to high permeability	
	KF	Complex aqifer - karstified to fissured rocks	
FISSURED AQUIFER	F	Fissured aqifer, well fractured and permeable rocks	
INTERGRANULAR AQUIFER	I1	Intergranular aqifer of high permeability	
	I2	Intergranular aqifer of moderate permeability	
	I3	Intergranular aqifer of low permeability	
AQUITARD TO AQUICLUDE	A	Aqifer of low permeability to completely impermeable rocks	
NON AQUIFER	N	Non-permeable rocks, hydrogeological barrier	

- Legend of Litho-Stratigraphical Units**
- Qt** "Tigers" pattern mostly present in water logging areas ponds and zones with elevated humidity. A rare vegetation usually accompanies this formation
 - Qc** Re-deposited sediments, red soil, continental carbonate crust, laterites. Heterogeneous lithology often well cemented and poorly permeable rocks
 - Ek** Karkar (Karkaar) limestones: nodular nummulitic limestones and marl intercalations with a rich shallow-marine fauna.

Surface of promising areas of Area of Interest 4.

ID Promising Area	Surface of area in km ²
AOI-4-14	226.4
AOI-4-15	292.7

