

Flood Alert!

Issued: 06 May 2016



Food and Agriculture Organization of the United Nations



Wet conditions persisted in many parts of Somalia as a result of heavy rains in the country. The Ethiopian highlands have been receiving heavy rains in the last few weeks. Following these heavy rains, river levels have increased drastically along the Juba and Shabelle Rivers. Further, flash floods have been reported in some areas in Puntland and Somaliland due to heavy rains in the area.

The 3 days rainfall forecast (Map-1) is pointing towards continued heavy rains with an increase towards the end of the week (Map-2).

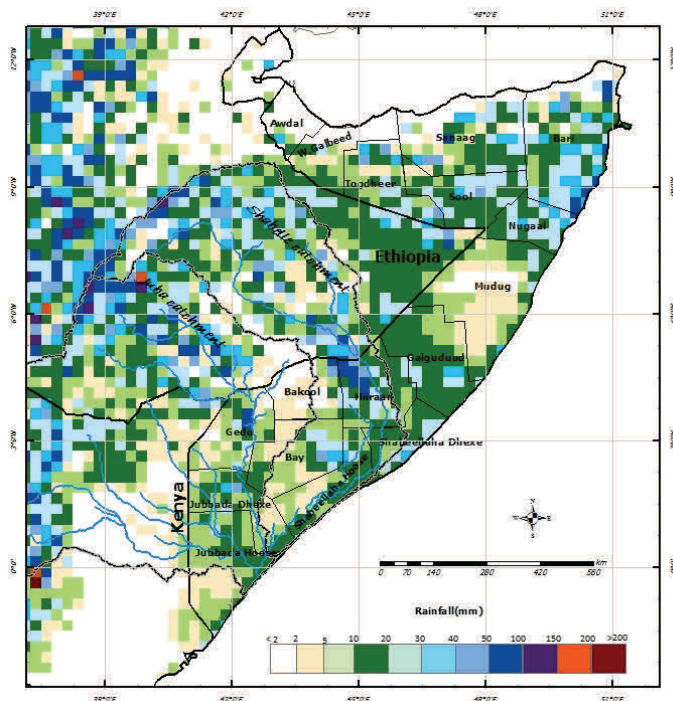
Given the rainfall forecast, observed river levels along the two rivers are expected to continue rising further especially in downstream areas. Today's river level at Belet Weyne along Shabelle River is 6.60m. These high levels are expected to be transmitted further downstream with a likelihood of flooding.

There is therefore a **high** risk of flooding in the coming few days along the Shabelle River while a **moderate** risk of flooding is foreseen along the Juba River.

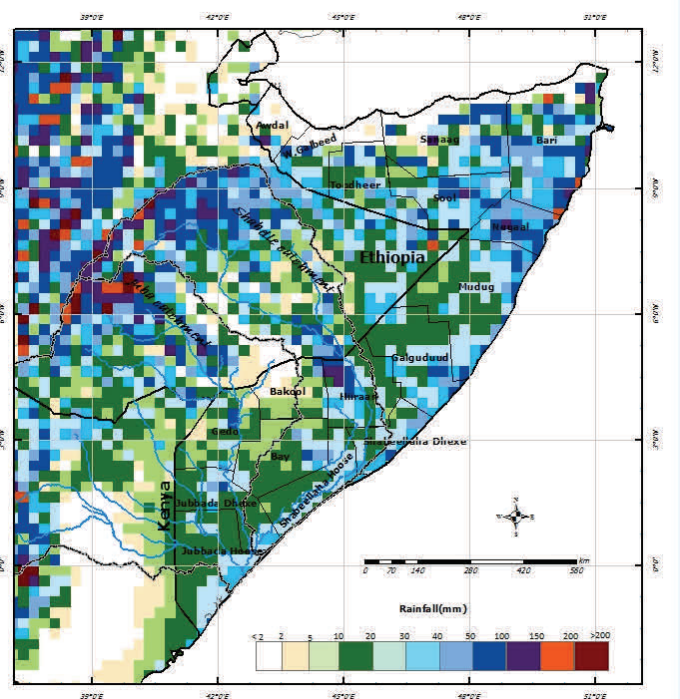
The foreseen heavy rains are also likely to cause flash floods in built up and low lying areas within Somaliland, Puntland (especially in Bari and Nugaal regions) and the central parts of the country.

For more information on this and related issues please visit: <http://systems.faoso.net/frrims/rivers/floods>

Map-1: 3 day rainfall forecast 6-8th May 2016



Map-2: 7-Day Rainfall Forecast:- week ending 12/05/16



Technical Partners



SWALIM Funding Agencies

