

Somalia Flood Watch

Issued: 01st December, 2015



FLOOD WARNING LEVEL

KEY TO WARNING LEVELS

	Last Week	Coming Week
Shabelle		
Juba		

- Severe Flooding Possible** (Red)
- Moderate Flooding (up to 5 year return period)** (Orange)
- Minimal/No Flood Risk** (Green)

During the week that ended on 30th November 2015, there was a further reduction of rainfall activities in most areas of Juba and Shabelle basins inside Somalia as well as the Ethiopian highlands compared to the previous week. However, a few stations in Middle and Lower Shabelle regions recorded moderate rains as seen in the table below. Map - 1 shows the total satellite Rainfall Estimates (RFE) for the same reporting period while Map -2 shows the rainfall forecast for coming week.

Station Name	Luuq	Bardheere	Bur Hakaba	Dollow	Belet Weyne	Mataban
Rainfall (mm)	0.0	0.0	0.0	0.0	0.0	0.0
Station Name	Bulo burti	Jowhar	Balcad	Mogadishu	Wanle Weyne	Bualle
Rainfall (mm)	0.0	16.0	20.0	25.0	15.0	0.0

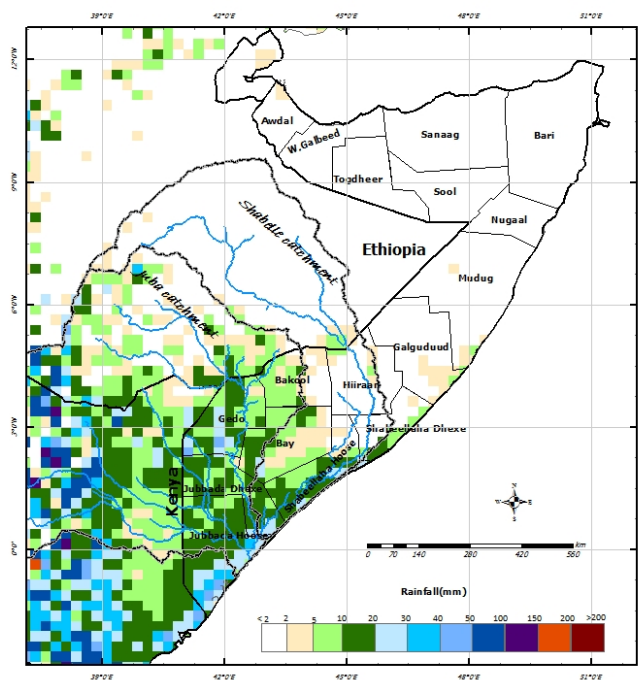
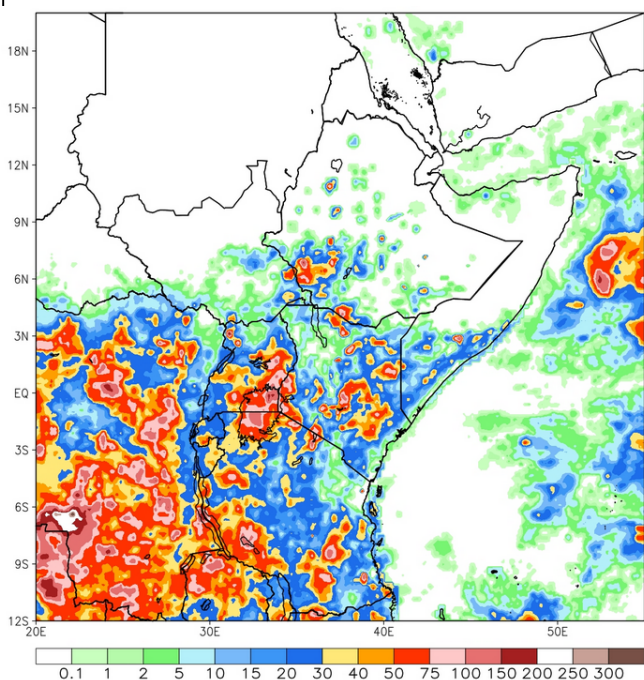
Satellite rainfall estimates (Map-1) also indicates reduction of rainfall amounts during the same period within the Juba and Shabelle basins. The rainfall forecast for the coming week (Map - 2) indicates a possibility of moderate rains in Gedo, and the Jubas as well as the coastal areas of Lower Shabelle.

The risk of flooding in the lower reaches of Shabelle changes to **moderate** due to the existing open and weak river banks and observed high river levels in the areas.

The flood risk level for Juba changes to **minimal** during the coming week.

Map -1: Total RFE: Week ending 30/11/2015

Map-2: 7-Day Rainfall Forecast: up to 08/12/2015



This bulletin is produced by the FAO Somalia Water and Land Information Management (SWALIM). For more information send an e-mail to SO-Hydro@fao.org or visit <http://www.faoswalim.org>

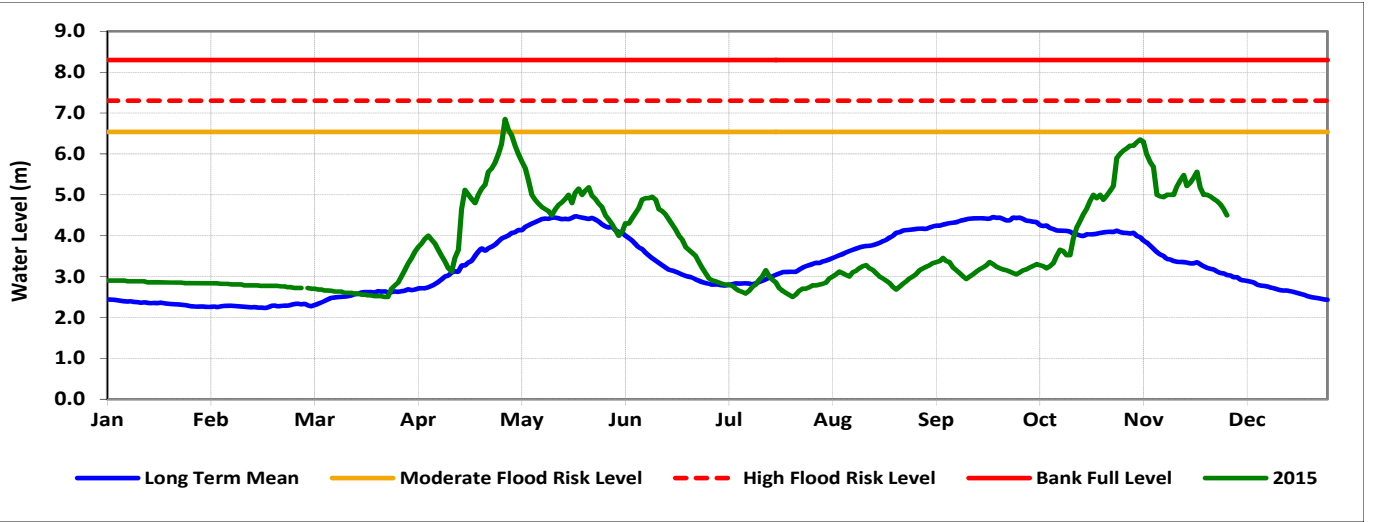
Technical Partners



SWALIM Funding Agencies



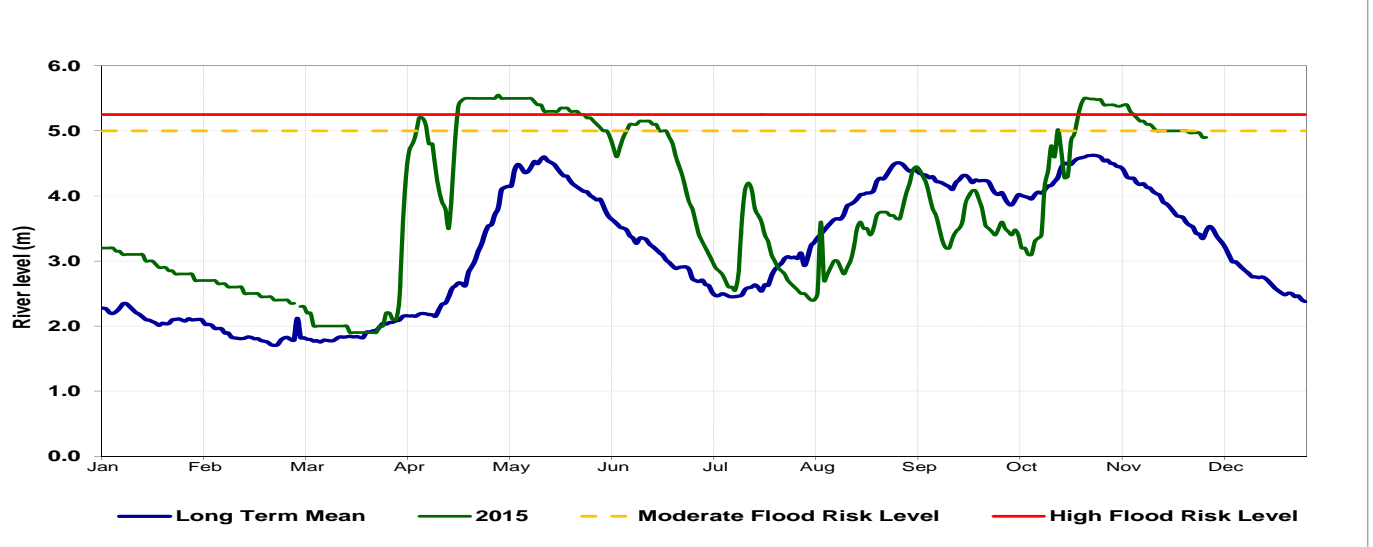
Belet Weyne



Date	Observed River Level (m)	Moderate Flood Risk Level (m)	High Flood Risk Level (m)
01/12/2015	4.50	6.50	7.30

Observed river levels at Belet Weyne decreased during the last week . Today’s river level is 4.50m which is 2.80m below the high risk flood level.

Jowhar



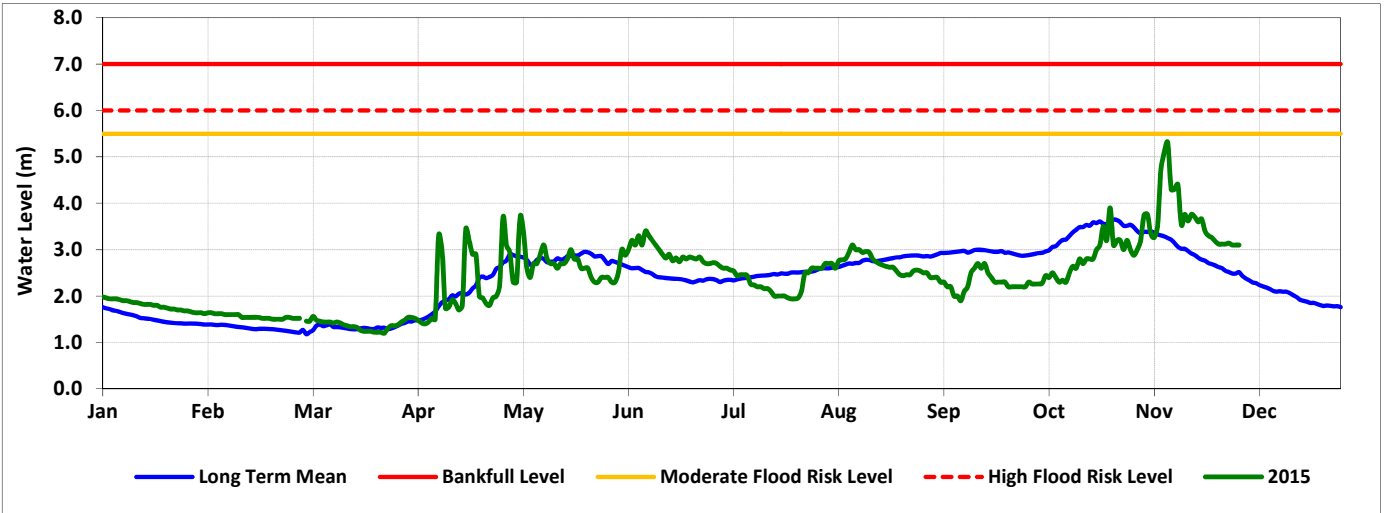
Date	Observed River Level (m)	Moderate Flood Risk Level (m)	High Flood Risk Level (m)
01/12/2015	4.90	5.00	5.25

Observed river levels at Jowhar remained high through out the week.. Today’s river level is 4.90m which is a few centimetres from the high risk flood level.

Forecast for coming week for Shabelle

Given the reduction of rainfall and river levels the risk of flooding in the lower reaches changes to moderate owing to the relatively high river levels and existing open river banks and weak river embankments.

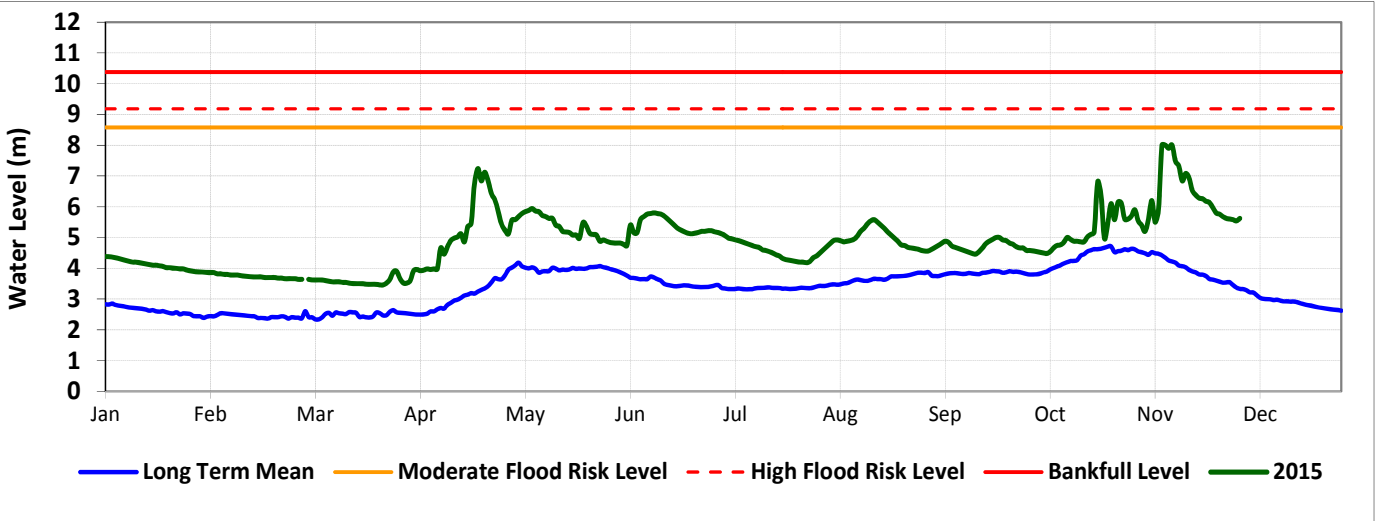
Luuq



Date	Observed River Level (m)	Moderate Flood Risk Level (m)	High Flood Risk Level (m)
01/12/2015	3.10	5.50	6.00

Observed river level at Luuq continued to decrease over the last week. Today’s river level is 3.10m which is 2.90m below the high risk flood level.

Bardheere



Date	Observed River Level (m)	Moderate Flood Risk Level (m)	High Flood Risk Level (m)
01/12/2015	5.62	8.58	9.18

Observed river levels at Bardheere decreased further during the last week. Today’s river level is 5.62m which is 3.56m below the high risk flood level.

Forecast for coming week for Juba

Given the rainfall forecast and observed river levels there is minimal risk of flooding along the Juba during the coming week.