

Somalia Flood Watch

Issued: 05th November, 2014



FLOOD WARNING LEVEL

	Last Week	Coming Week
Shabelle		
Juba		

KEY TO WARNING LEVELS

Severe Flooding Possible

Moderate Flooding (up to 5 year return period)

Minimal/No Flood Risk

During the week ending on 03 November, 2014, moderate to heavy rains were experienced in both Juba and Shabelle river basins inside Somalia. There was however a reduction of rainfall activities within the Ethiopian highlands.

The table below show some stations that recorded rains in the past one week; while Map - 1 shows the total satellite Rainfall Estimates (RFE) for the same reporting period. Map -2 shows the rainfall forecast for coming week.

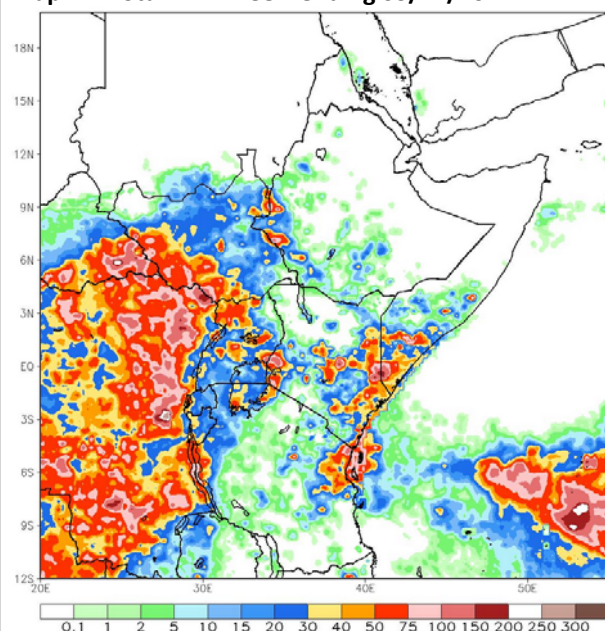
Station Name	Luuq	Bardheere	Bur Hakaba	Wanle Weyne	Bulo Burti	Jowhar	Belet Weyne
Rainfall (mm)	50.0	78.0	107.0	76.0	107.0	45.0	134.0

The rainfall forecast for the coming week (Map - 2) indicates moderate rains within the two basins both inside Somalia and within the Ethiopian highlands.

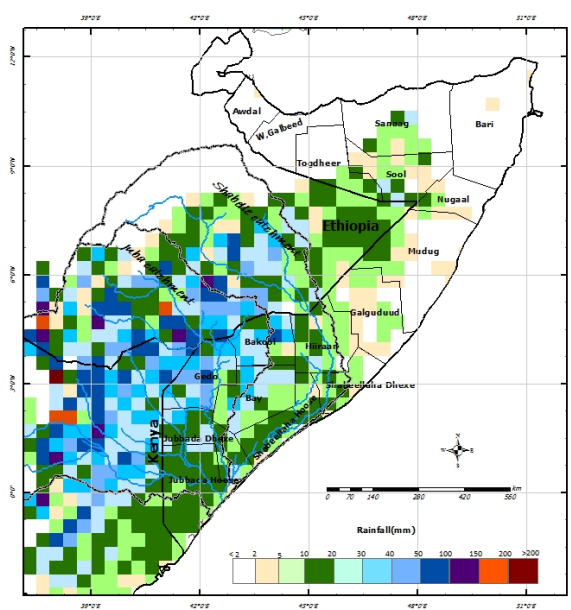
River levels in the upstream stations along the Juba and Shabelle (Luuq and Belet Weyne respectively) have decreased over the last few days. The levels in the lower reaches of the two rivers remain high. Areas worst affected by the on going floods include Middle and Lower Shabelle as well as Middle and Lower Juba regions.

Given the rainfall forecast and the current high river levels, the risk level of flooding along the lower reaches of the Juba and Shabelle rivers remain **High**.

Map -1: Total RFE: Week ending 03/11/2014



Map-2: 7-Day Rainfall Forecast: up to 10/11/2014



This bulletin is produced by the FAO Somalia Water and Land Information Management (SWALIM). For more information send an e-mail to SO-Hydro@fao.org or visit <http://www.faoswalim.org>

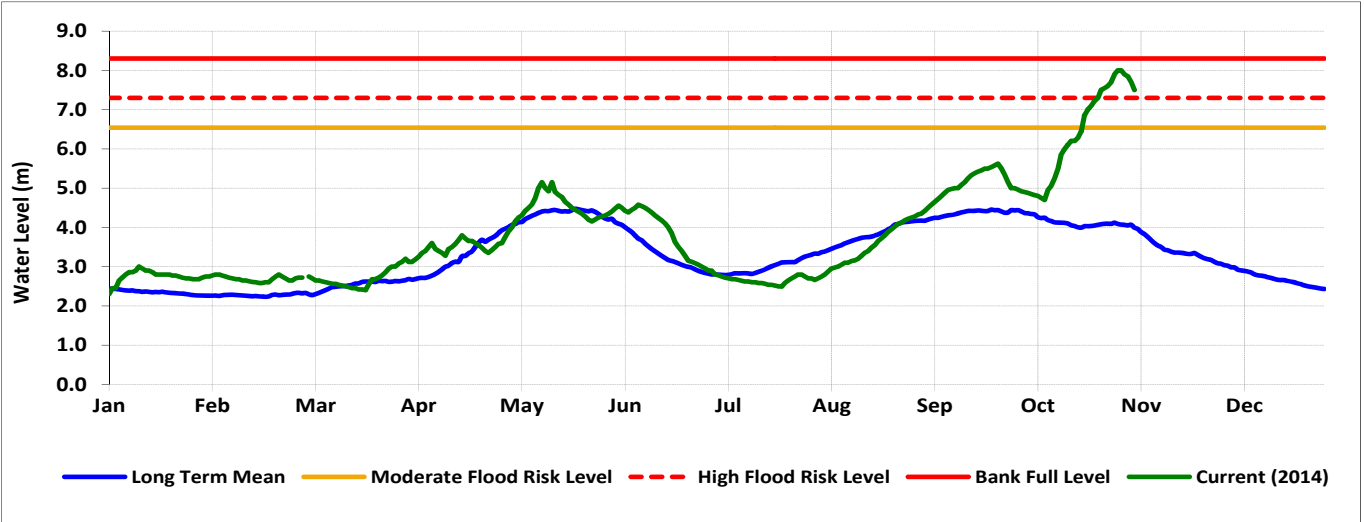
Technical Partners



SWALIM Funding Agencies



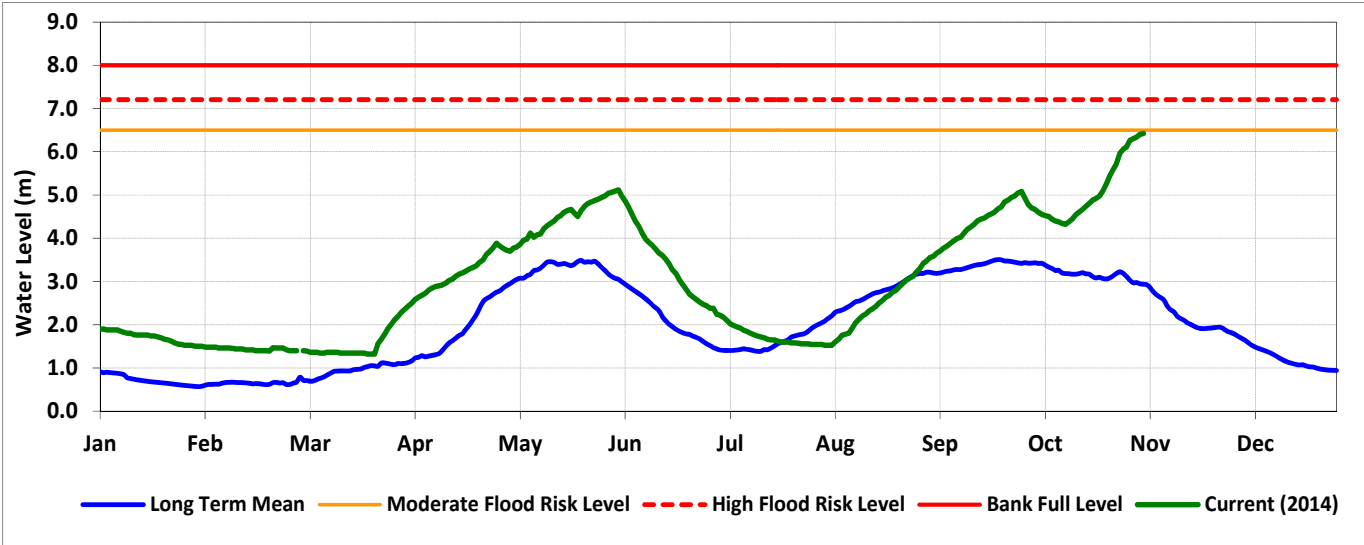
Belet Weyne



Date	Observed River Level (m)	Moderate Flood Risk Level (m)	High Flood Risk Level (m)
5 - Nov-14	7.30	6.50	7.30

Observed river levels at Belet Weyne decreased slightly towards the end of last week. Today’s river level is 7.30m which is at the high risk flood level.

Bulo Burti



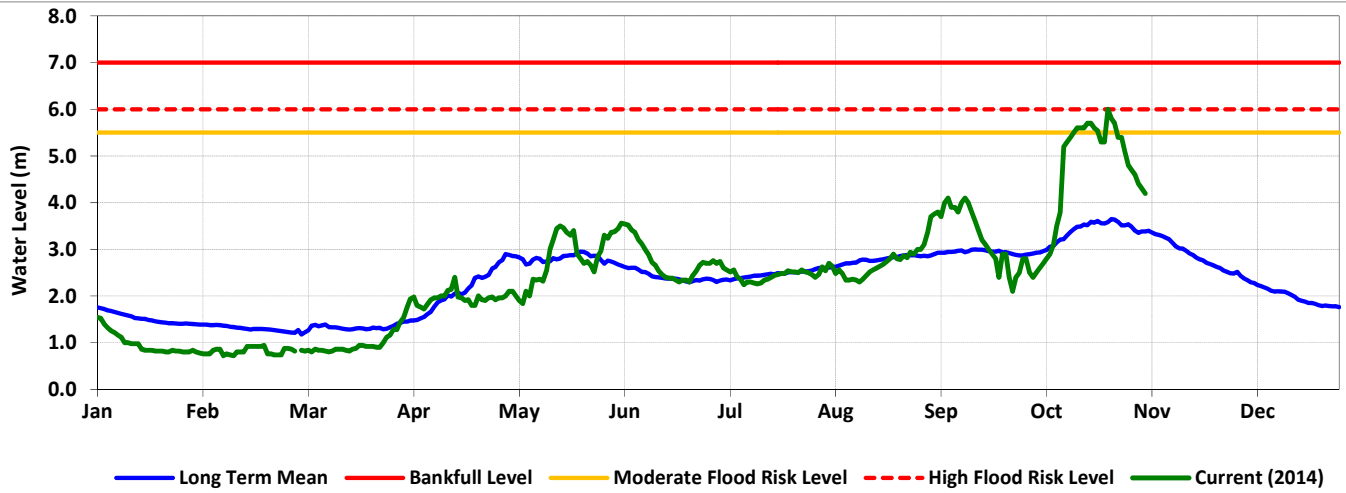
Date	Observed River Level (m)	Moderate Flood Risk Level (m)	High Flood Risk Level (m)
5-Nov-14	6.45	6.50	7.20

Observed river levels at Bulo Burti continued to rise over the last week. Today’s river level is 6.42m which is 0.75m below the high risk flood level.

Forecast for coming week for Shabelle

Given the rainfall forecast for coming week and the current observed river levels, the high risk of flooding remains during the forecast period especially in the lower reaches of the river.

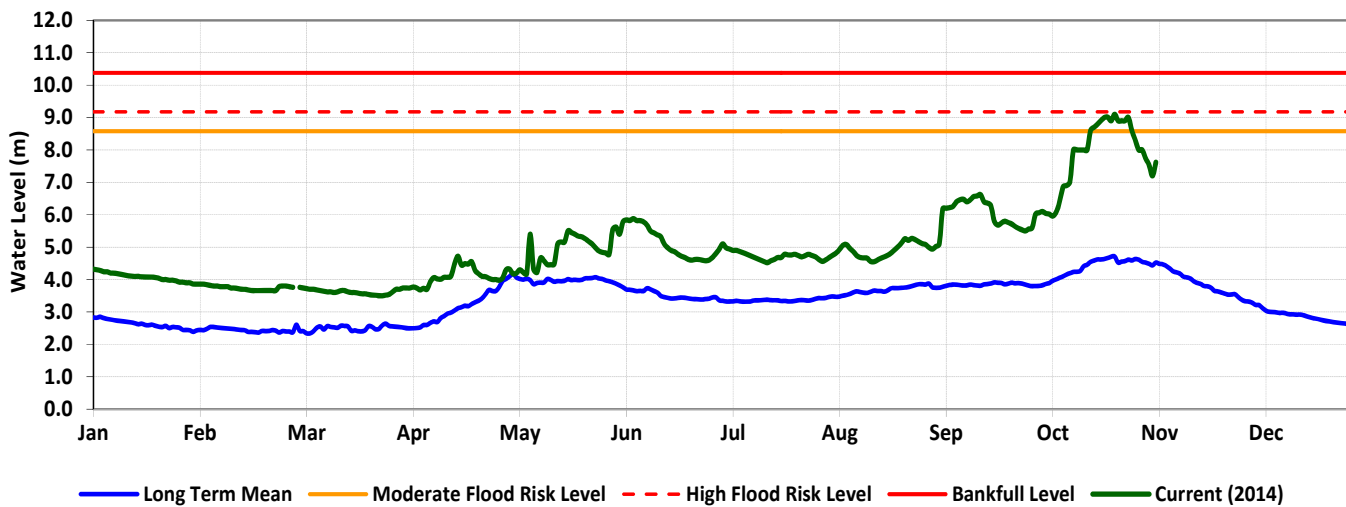
Luuq



Date	Observed River Level (m)	Moderate Flood Risk Level (m)	High Flood Risk Level (m)
5 -Nov-14	4.00	5.50	6.00

Observed river levels at Luuq decreased drastically over the last week. Today’s river level is 4.00m which is 2.00m below the high risk flood level.

Bardheere



Date	Observed River Level (m)	Moderate Flood Risk Level (m)	High Flood Risk Level (m)
5 -Nov-14	7.20	7.42	8.20

Observed river levels at Bardheere decreased sharply over the last week. Today’s river level is 7.20m which is 1.00m below the high risk flood level.

Forecast for coming week for Juba

Given the rainfall forecast for coming week and the current observed river levels, the high risk of flooding remains during the forecast period especially in the lower reaches of the river.