



Somalia Flood Watch

Issued: 06th May, 2014



FLOOD WARNING LEVEL

	Last Week	This week	Next Week
Shabelle			
Juba			

KEY TO WARNING LEVELS

Severe Flooding Possible

Moderate Flooding (up to 5 year return period)

Minimal/No Flood Risk

The rainfall within the Juba and Shabelle basins over the last week varied greatly both in space and quantity inside Somalia. A few places recorded moderate rains while others received little or no rains. The table below shows the total rainfall amounts recorded in selected stations within the two basins in Somalia:

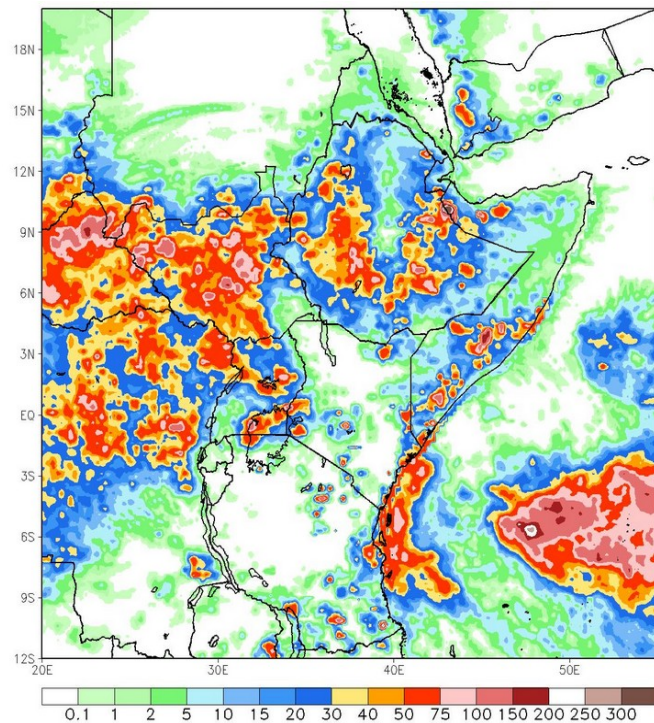
Station Name	Bur Hakaba	Bardheere	Wanle Weyne	Belet Weyne	Bulo Burti	Jowhar	Mogadishu
Rainfall (mm)	14.0	16.0	10.0	0.0	25.0	0.0	30.0

The 7-day cumulative satellite rainfall estimate (RFE) image (Map – 1) indicates moderate rains were received within the Juba and Shabelle basins both in Somalia and within the Ethiopian highlands.

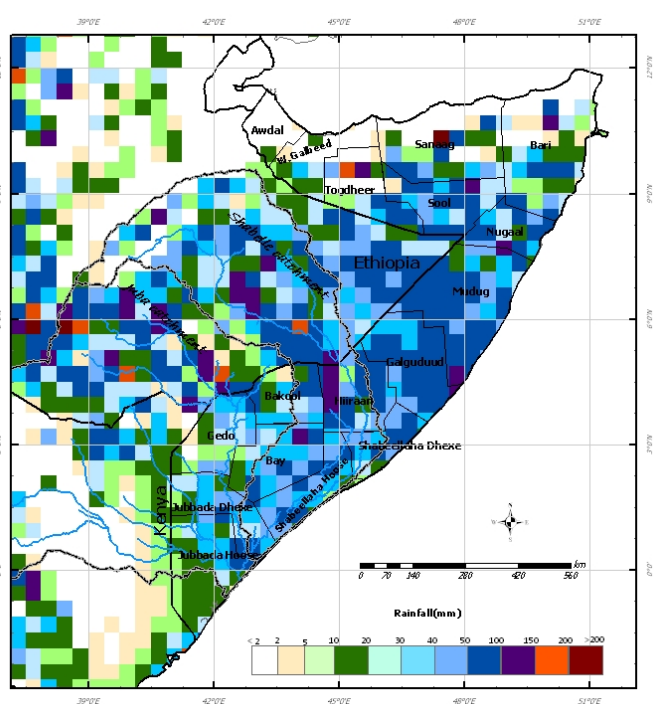
The rainfall forecast for the coming week (Map – 2) is pointing towards moderate to heavy rains within the Shabelle and Juba basins both in Ethiopia and Somalia.

The river levels are currently below normal along the two rivers and therefore there is no foreseen risk of flooding in the coming week.

Map –1: Total RFE: Week ending 05/05/2014



Map-2: 7-Day Rainfall Forecast: up to 13/05/2014



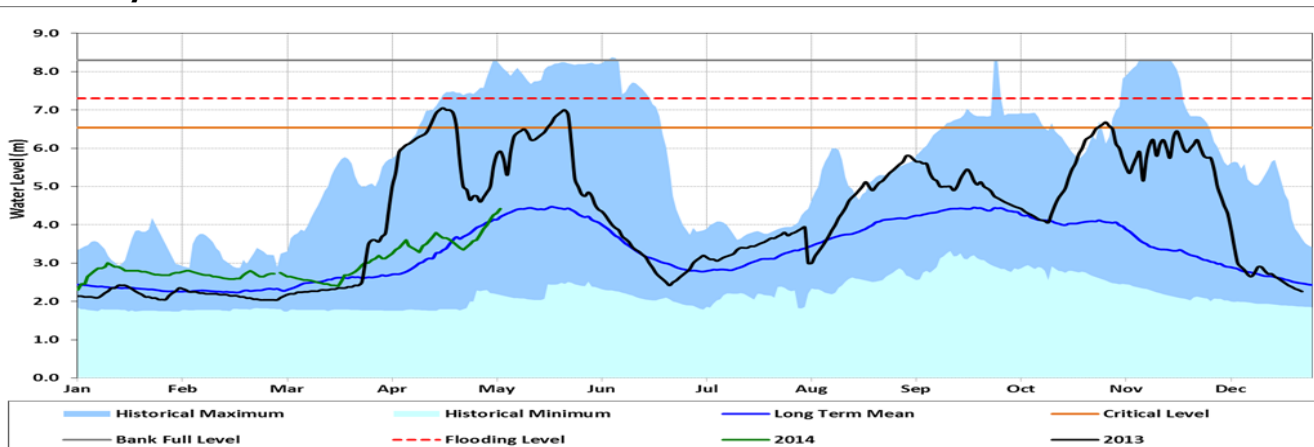
This bulletin is produced by the FAO Somalia Water and Land Information Management (SWALIM) Project, in collaboration with USGS and, FEWS NET Somalia.



For more information send an e-mail to SO-Hydro@fao.org or visit <http://www.faoswalim.org>



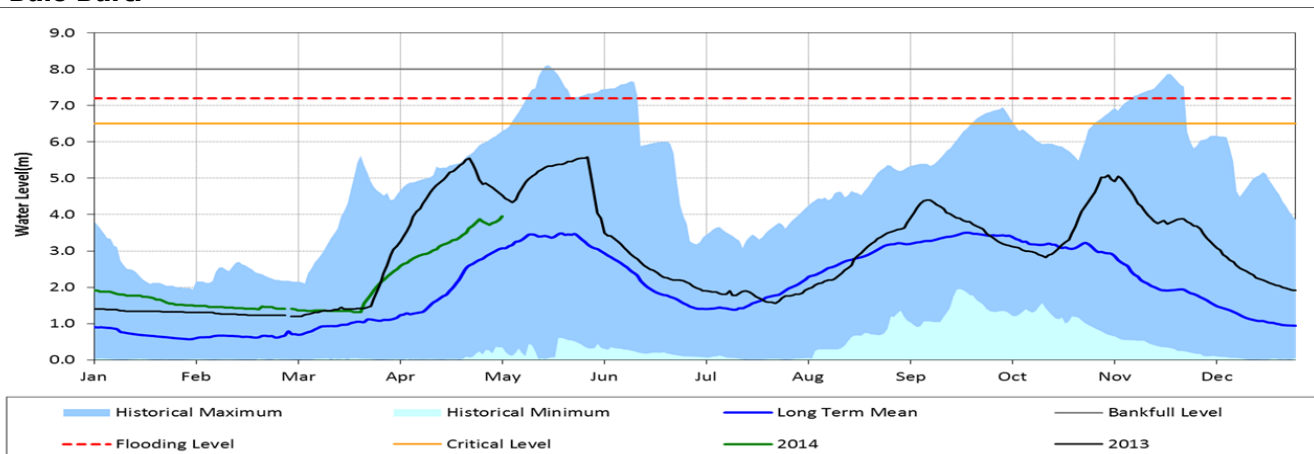
Belet Weyne



Date	Current river level	Relative position of current river level from:			
		Previous day	Low Flood Risk	Moderate Flood Risk	High Flood Risk
6-May-13	4.42	0.12	1.48	2.08	2.88
5-May-13	4.30	0.05	1.60	2.20	3.00
4-May-13	4.25	0.10	1.65	2.25	3.05

Today's river level at Belet Weyne is 4.42m which is 2.88m below the high risk flood level.

Bulo Burti



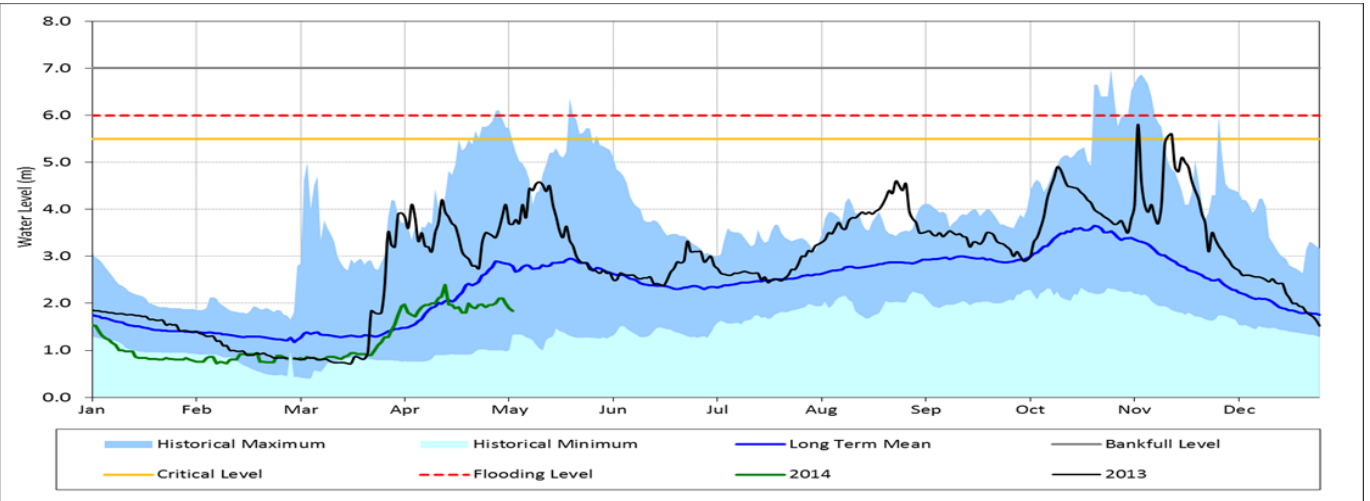
Date	Current river level	Relative position of current river level from:			
		Previous day	Low Flood Risk	Moderate Flood Risk	High Flood Risk
6-May-13	3.95	0.09	2.05	2.55	3.25
5-May-13	3.86	0.06	2.14	2.64	3.34
4-May-13	3.80	0.03	2.20	2.70	3.40

Observed river levels at Bulo Burti increased over the last week. Today's river level is 3.95m which is 3.25m below the high risk flood level.

Forecast for coming week for Shabelle

Given the rainfall forecast for coming week, the observed river levels are likely to increase slightly with minimal risk of flooding.

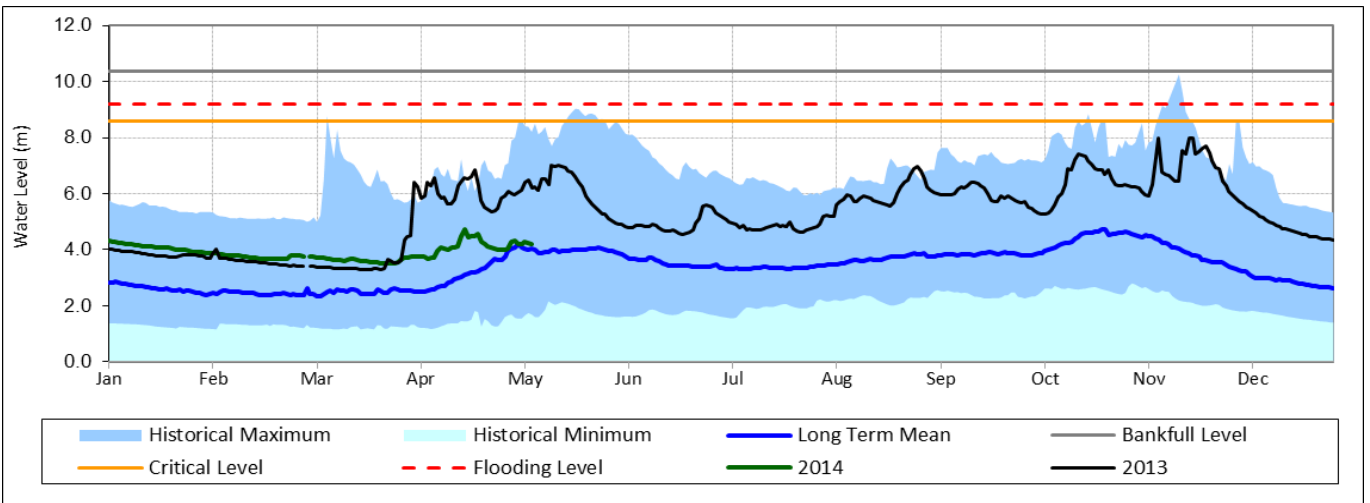
Luuq



Date	Current river levels	Relative position of current river levels from:			
	Levels	Previous day	Low Flood Risk	Moderate Flood Risk	High Flood Risk
6-May-13	1.80	0.10	3.40	3.70	4.20
5-May-13	1.90	0.10	3.30	3.60	4.10
4-May-13	2.00	0.10	3.20	3.50	4.00

Observed river levels at Luuq fluctuated over the last week. Today's river level is 1.80m which is 4.20m below the high risk flood level.

Bardheere



Date	Current river levels	Relative position of current river levels from:			
	Levels	Previous day	Low Flood Risk	Moderate Flood Risk	High Flood Risk
6-May-13	4.18	-0.04	4.00	4.40	5.00
5-May-13	4.22	-0.08	3.96	4.36	4.96
4-May-13	4.30	0.10	3.88	4.28	4.88

Observed river levels at Bardheere fluctuated over the last week. Today's river level is 4.18m which is 5.00m below the high risk flood level.

Forecast for coming week for Juba

There is no foreseen risk of flooding during the forecast period.