

# Somalia Flood Watch

Issued: 08 May 2018



## FLOOD WARNING LEVEL

	Last Week	Coming Week
Shabelle		
Juba		

## KEY TO WARNING LEVELS

**Severe Flooding Possible**

**Moderate Flooding (up to 5 year return period)**

**Minimal/No Flood Risk**

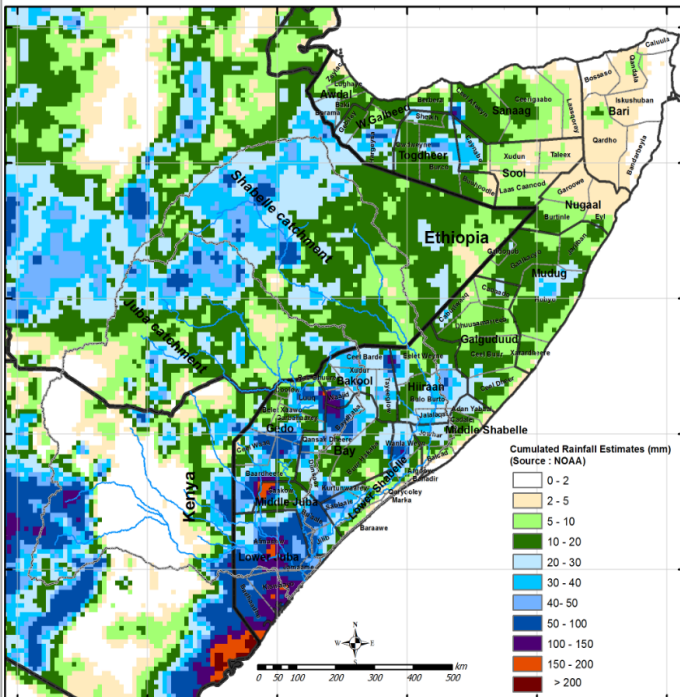
During the week ending on 07 May 2018, the Juba and Shabelle basins in Somalia and in the Ethiopian highlands continued to receive moderate to heavy rains. The high rainfall amounts received over the last week were spread across many parts of the country, as indicated in the total Satellite Rainfall Estimates (RFE) in Map1, with the exception of Puntland where light rains were experienced. Lower Juba and Middle Juba regions experienced the highest amounts of rainfall during the week under review.

The rainfall forecast for the coming week (Map 2, valid until 14 May 2018) is calling for moderate to heavy rains in most places across the country as well as the Ethiopian highlands.

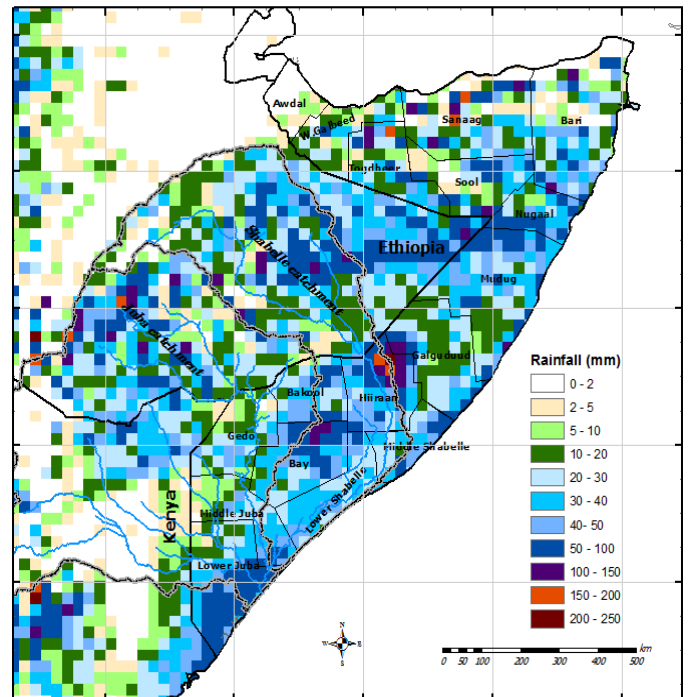
Following the enhanced rains observed river levels remained high along the two rivers. Belet Weyne in Hiraaan region has been at bank full level for the last 14 days and is expected to remain the same for the next couple of days. Many stations along the Juba also reached their highest level in the recent history. Continued heavy rains and high river levels have led to flooding which currently exceeds a 50 year return period flood magnitude.

Given the forecast and the current high river levels riverine flooding is likely to continue and get worse in the coming week. Flood waves from the upper parts of the two rivers in Ethiopia are expected to be transmitted to the two river in Somalis which are already at full capacity thus posing more risk.

Map -1: Total RFE: Week ending 07 May 2018



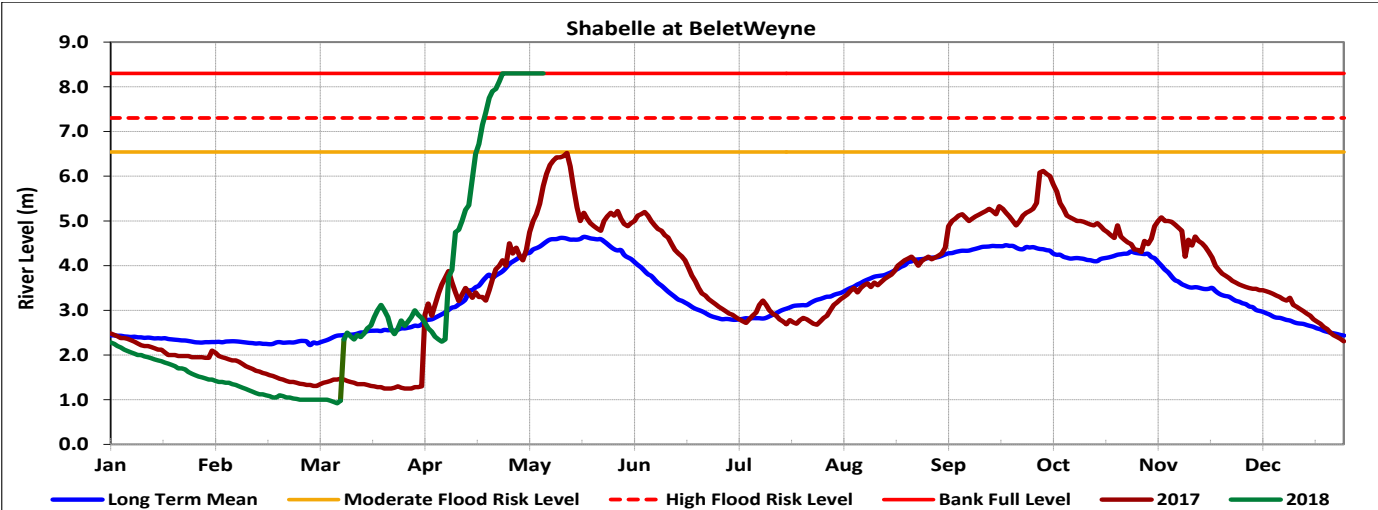
Map-2: 7-Day Rainfall Forecast: up to 14 May 2018



This update is produced by the: FAO - Somalia Water and Land Information Management—SWALIM Project. For more information regarding this product please contact [SO-hydro@fao.org](mailto:SO-hydro@fao.org) or visit <http://www.faoswalim.org>

Primary data sources are; Ministry of Agriculture & Irrigation and Ministry of Energy & Water Resources of the Federal Government of Somalia, SWALIM and NOAA/USGS. Tables, Maps and graphs on this bulletin are produced from three sources.

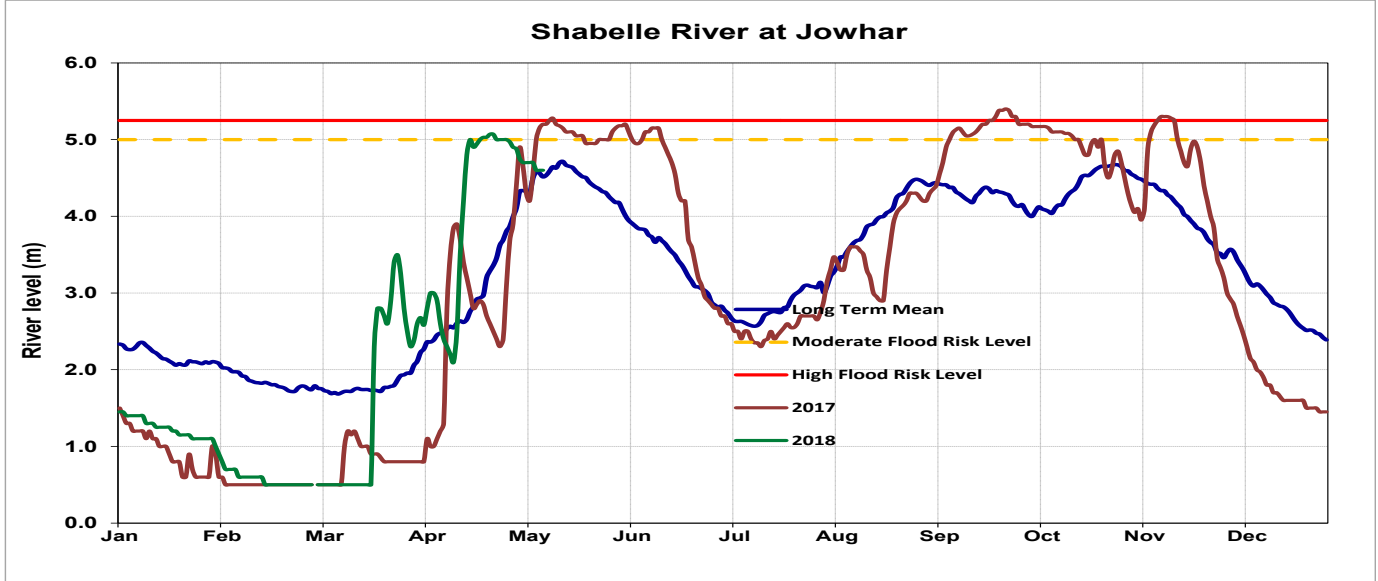
**Belet Weyne**



Date	Observed River Level (m)	Moderate Flood Risk Level (m)	High Flood Risk Level (m)
08 May 2018	8.30	6.50	7.30

Observed river levels at Belet Weyne have been at bank full level for the last 14 days and are expected to remain the same in the coming days given the rainfall forecast and current ground situation.

**Jowhar**



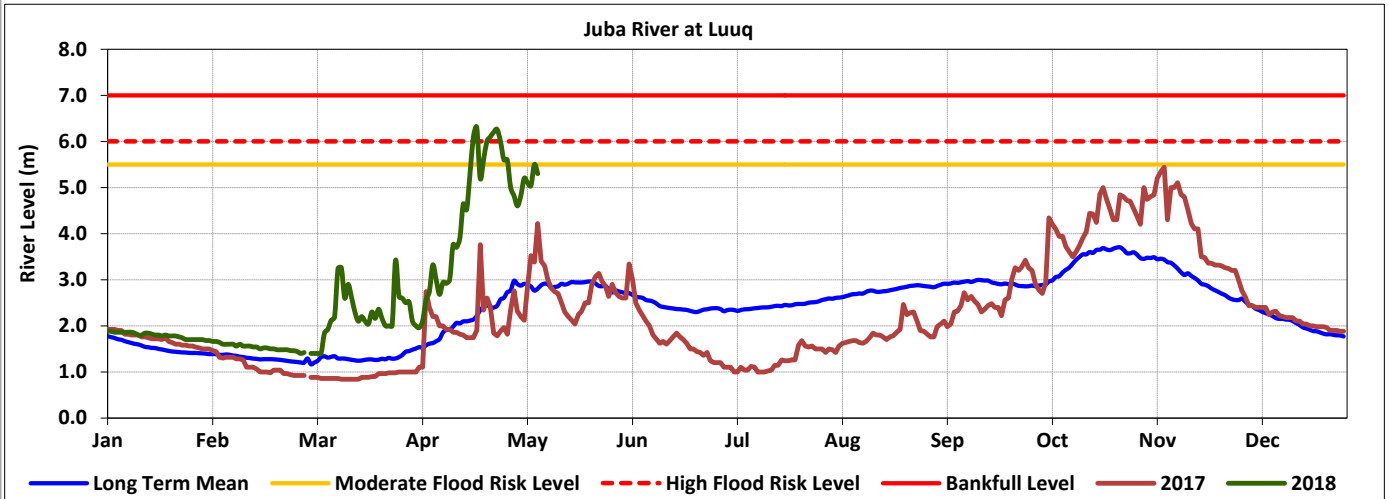
Date	Observed River Level (m)	Moderate Flood Risk Level (m)	High Flood Risk Level (m)
08 May 2018	4.60	5.00	5.25

Observed river levels at Jowhar, which is in the middle parts of the river, remained high over the last week and is expected to continue rising posing a high risk of flooding in the area.

**Forecast for coming week for Shabelle**

Given the rainfall forecast and the high river levels, flooding along the Shabelle in the coming week will continue.

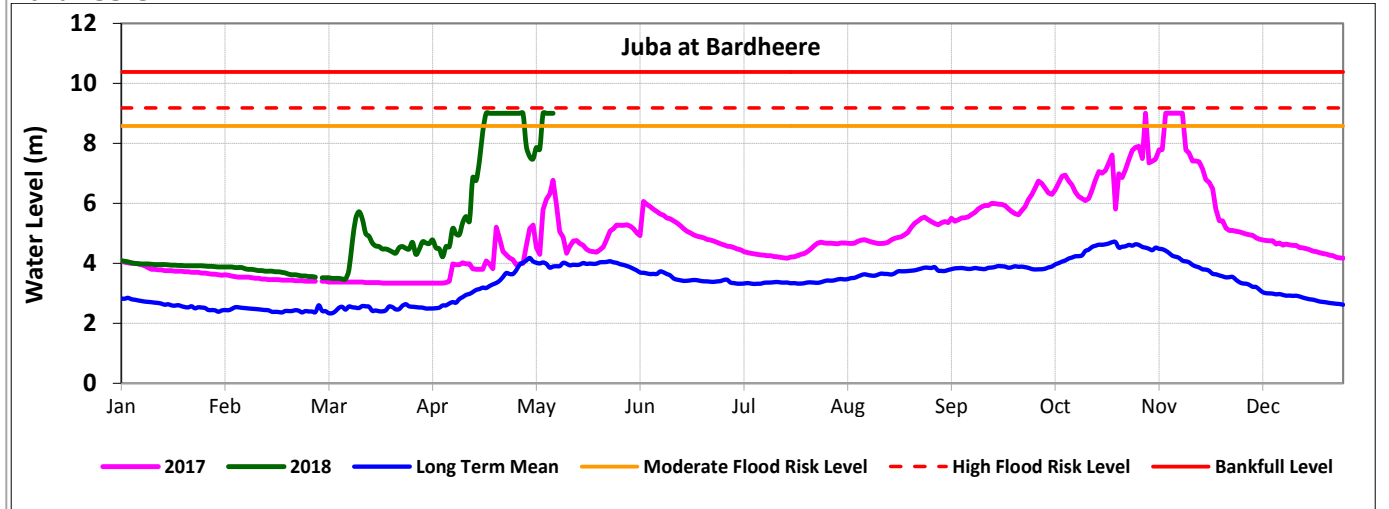
Luuq



Date	Observed River Level (m)	Moderate Flood Risk Level (m)	High Flood Risk Level (m)
08 May 2018	5.30	5.50	6.00

Observed river level at Luuq fluctuated over the last week. Levels are expected to continue rising in the coming week.

Bardheere



Date	Observed River Level (m)	Moderate Flood Risk Level (m)	High Flood Risk Level (m)
08 May 2018	9.00	7.40	8.20

Observed river levels at Bardheere remain high with the current level surpassing the high flood risk level.

Forecast for coming week for Juba

Given the rainfall forecast and the high river levels, flooding along the riverine areas will continue during the forecast period.

SWALIM Technical Partners



SWALIM is Currently Funded by:

