

# Somalia Flood Watch

Issued: 10 May 2017



## FLOOD WARNING LEVEL

	Last Week	Coming Week
Shabelle		
Juba		

## KEY TO WARNING LEVELS

Severe Flooding Possible

Moderate Flooding (up to 5 year return period)

Minimal/No Flood Risk

During the week ending on 09 May 2017, there were light to moderate rains within the Juba and Shabelle river basins both inside Somalia and the Ethiopian highlands. Map - 1 shows the total satellite Rainfall Estimates (RFE) for the same reporting period while Map -2 shows the rainfall forecast for coming week.

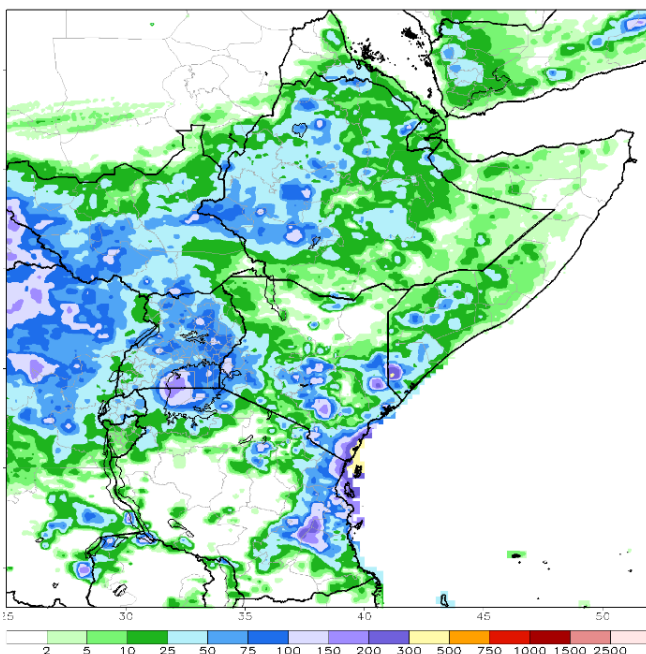
The rainfall forecast for the coming week (Map - 2) is pointing towards light to moderate rains within the Juba and Shabelle river basins with heavy rains foreseen in the coastal areas of the basins inside Somalia. The upper parts of the Ethiopian highlands are also expected to record significant rains during the week in focus.

Following the rains that were recorded in the basins in the last few weeks, the river levels along the two rivers rose significantly and are currently above normal levels at this time of the year

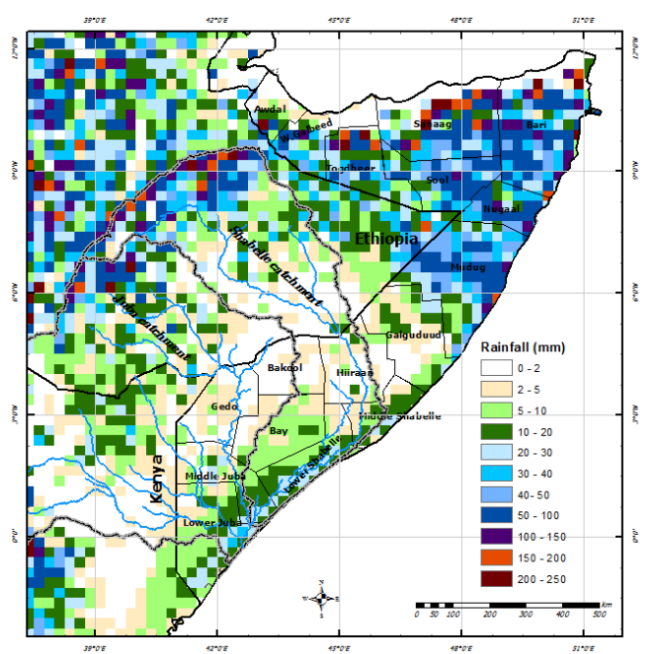
Given the rainfall forecast and the high river levels, there is a **high** risk of flooding along the middle and lower reaches of Shabelle River. Flooding in Middle Shabelle has been reported in Madheere Village and has caused damage to large amounts of cropped area and displacement of some households.

There is no risk of flooding foreseen along the Juba during the forecast period.

Map -1: Total RFE: Week ending 09 May 2017



Map-2: 7-Day Rainfall Forecast: up to 16 May 2017



This bulletin is produced by the FAO Somalia Water and Land Information Management (SWALIM). For more information send an e-mail to [SO-Hydro@fao.org](mailto:SO-Hydro@fao.org) or visit <http://www.faoswalim.org>

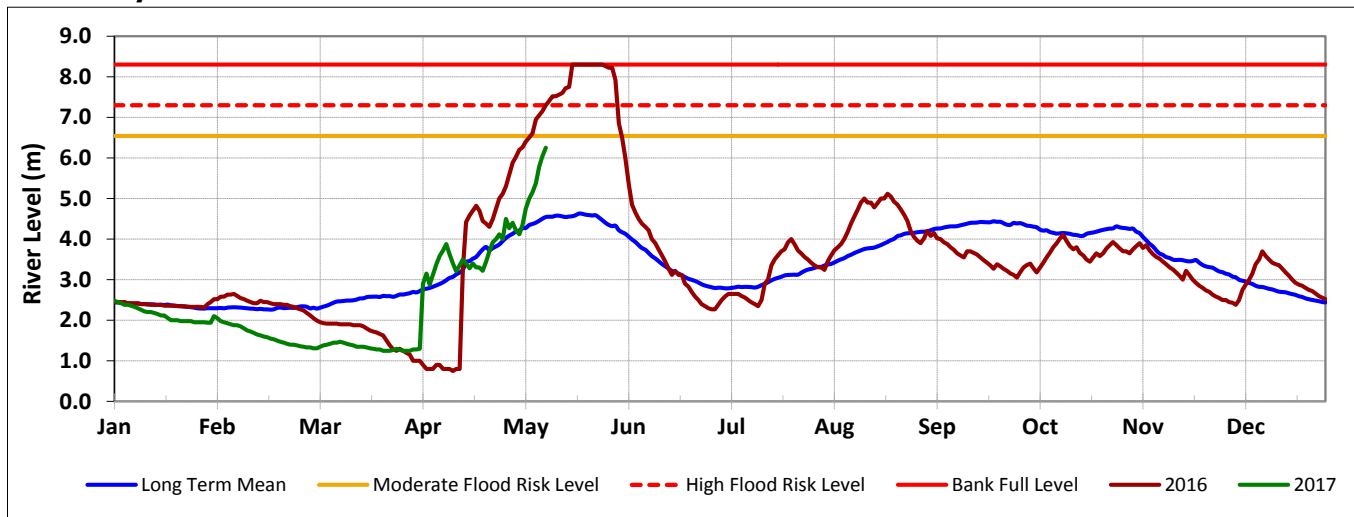
## Technical Partners



## SWALIM Funding Agencies



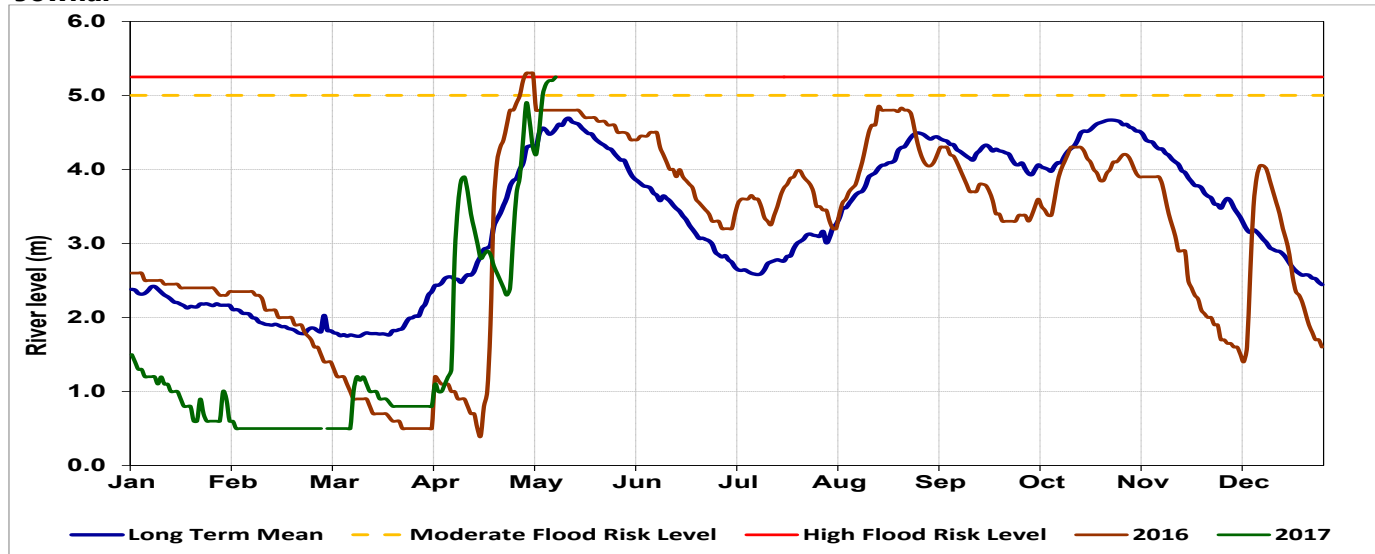
**Belet Weyne**



Date	Observed River Level (m)	Moderate Flood Risk Level (m)	High Flood Risk Level (m)
10 May 2017	6.25	6.50	7.30

Observed river levels at Belet Weyne continued to rise over the last week. Today’s river level is 6.25m which is 1.15m below the high risk flood level.

**Jowhar**



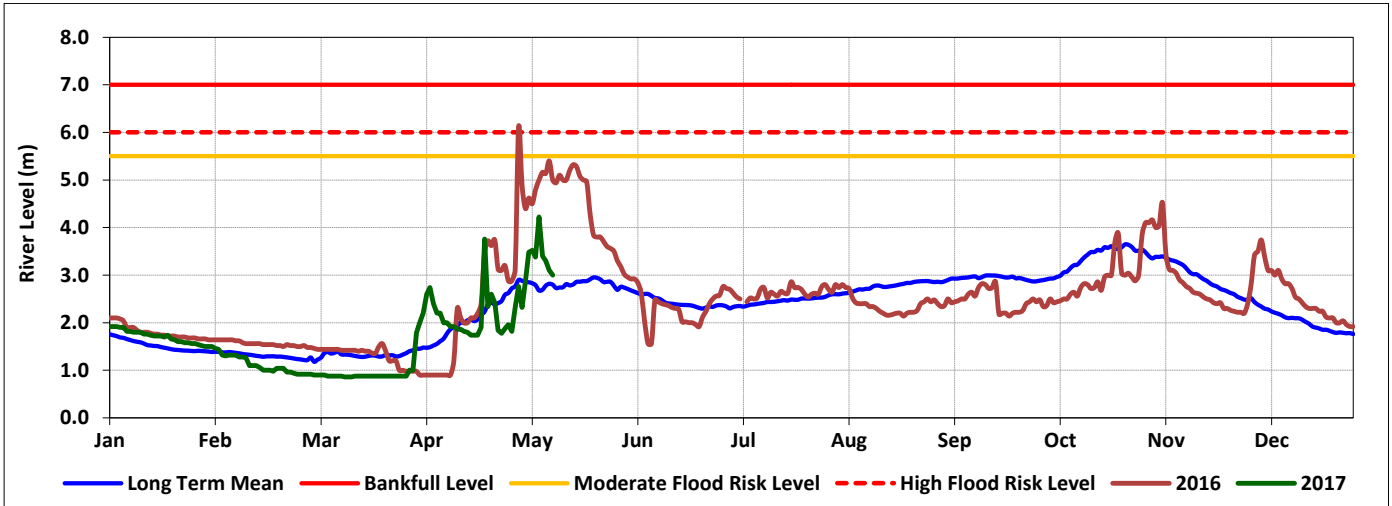
Date	Observed River Level (m)	Moderate Flood Risk Level (m)	High Flood Risk Level (m)
10 May 2017	5.25	5.00	5.50

Observed river levels at Jowhar which is in the middle parts of the river, increased sharply over the last few days. Today’s river level is 5.25m which is the high risk flood level.

**Forecast for coming week for Shabelle**

Given the rainfall forecast and the current river levels there is high likelihood of riverine flooding especially in the middle and lower parts of the river in areas with existing open river banks and weak river embankments.

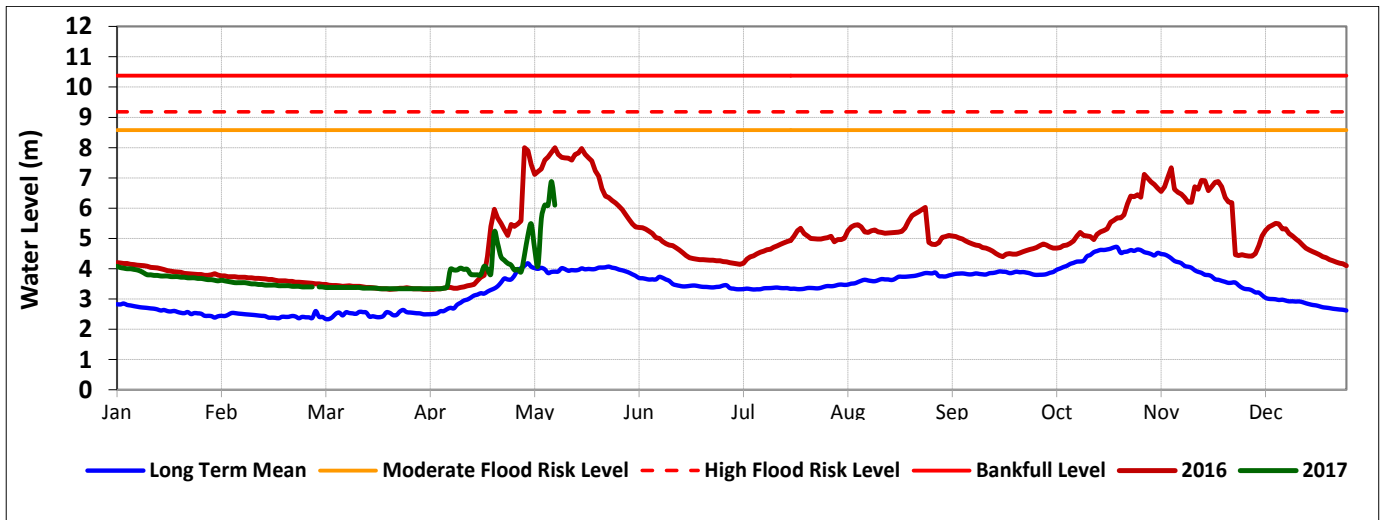
Luuq



Date	Observed River Level (m)	Moderate Flood Risk Level (m)	High Flood Risk Level (m)
10 May 2017	3.00	5.50	6.00

Observed river level at Luuq decreased slightly over the two days. Today's river level is 3.00m which is 3.00m below the high risk flood level.

Bardheere



Date	Observed River Level (m)	Moderate Flood Risk Level (m)	High Flood Risk Level (m)
10 May 2017	6.10	8.58	9.18

Observed river levels at Bardheere fluctuated over the last week. Today's river level is 6.10m which is 3.08m below the high risk flood level.

Forecast for coming week for Juba

There is no risk of flooding along Juba foreseen during the forecast period.