

Somalia Flood Watch

Issued: 10th November, 2015



FLOOD WARNING LEVEL

KEY TO WARNING LEVELS

	Last Week	Coming Week
Shabelle		
Juba		

Severe Flooding Possible

Moderate Flooding (up to 5 year return period)

Minimal/No Flood Risk

During the week that ended on 9th November 2015, wet conditions persisted in most areas of Juba and Shabelle basins inside Somalia as well as the Ethiopian highlands. Most stations within the Juba and Shabelle river basins recorded moderate to heavy rains within the week. Map - 1 shows the total satellite Rainfall Estimates (RFE) for the same reporting period while Map -2 shows the rainfall forecast for coming week.

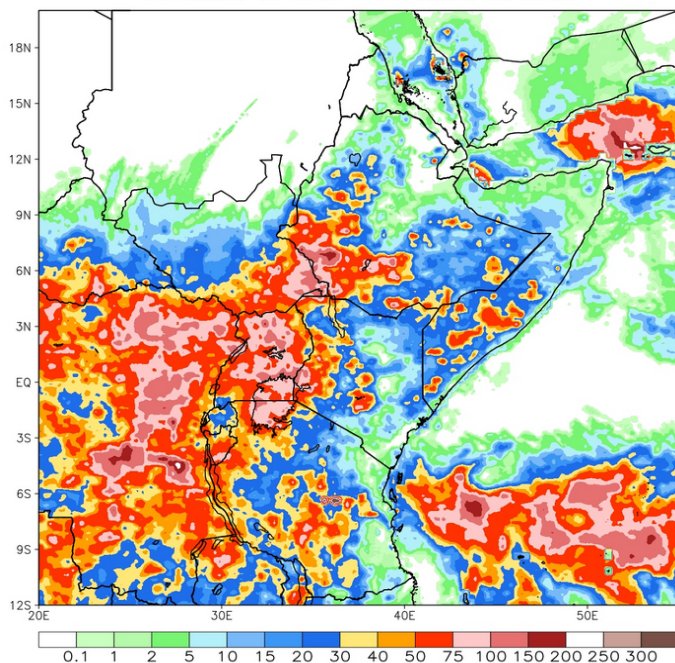
Station Name	Luuq	Bardheere	Bur Hakaba	Wanle Weyne	Belet Weyne	Mataban
Rainfall (mm)	56.0	60.0	78.0	18.0	78.0	83.0
Station Name	Bulo burti	Jowhar	Balcad	Mogadishu		
Rainfall (mm)	64.0	38.0	6.0	4.0		

Satellite rainfall estimates (Map-1) also indicates significant rains were received within the Juba and Shabelle basins during the last one week. The rainfall forecast for the coming week (Map - 2) indicates moderate to heavy rains within the two basins both inside Somalia and Ethiopian highlands. Heavy rains are also expected in Bay, Bakool and most regions of northern and central Somalia with a possibility of flash floods in these areas.

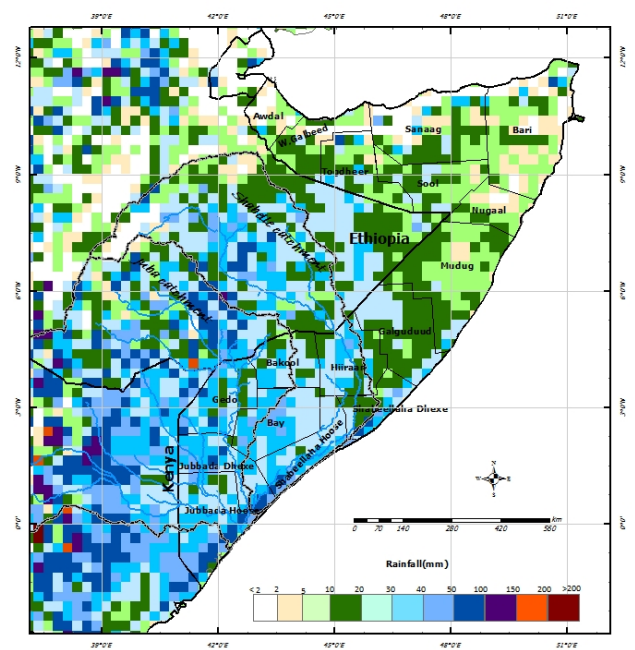
River levels in some sections of middle and lower reaches of Shabelle River are currently at full crest while the upper reaches of Jubba have increased sharply over the last few days and this is expected to reach the lower reaches in the next two days.

Given the rainfall forecast and the current river levels, there remains a **high** risk level of flooding along the middle and lower reaches of Shabelle. A **high** risk of flooding is also foreseen in the lower reaches of Juba River especially in locations where there exists open river breakages given the rainfall forecast, high river levels and existing open river breakages.

Map -1: Total RFE: Week ending 09/11/2015



Map-2: 7-Day Rainfall Forecast: up to 16/11/2015



This bulletin is produced by the FAO Somalia Water and Land Information Management (SWALIM). For more information send an e-mail to SO-Hydro@fao.org or visit <http://www.faoswalim.org>

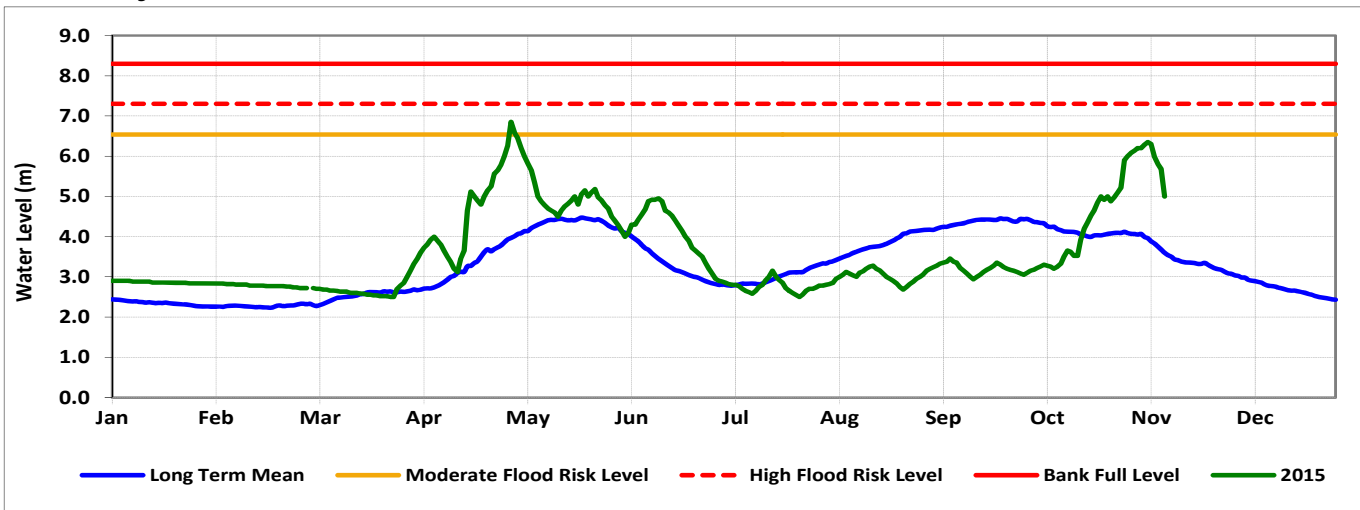
Technical Partners



SWALIM Funding Agencies



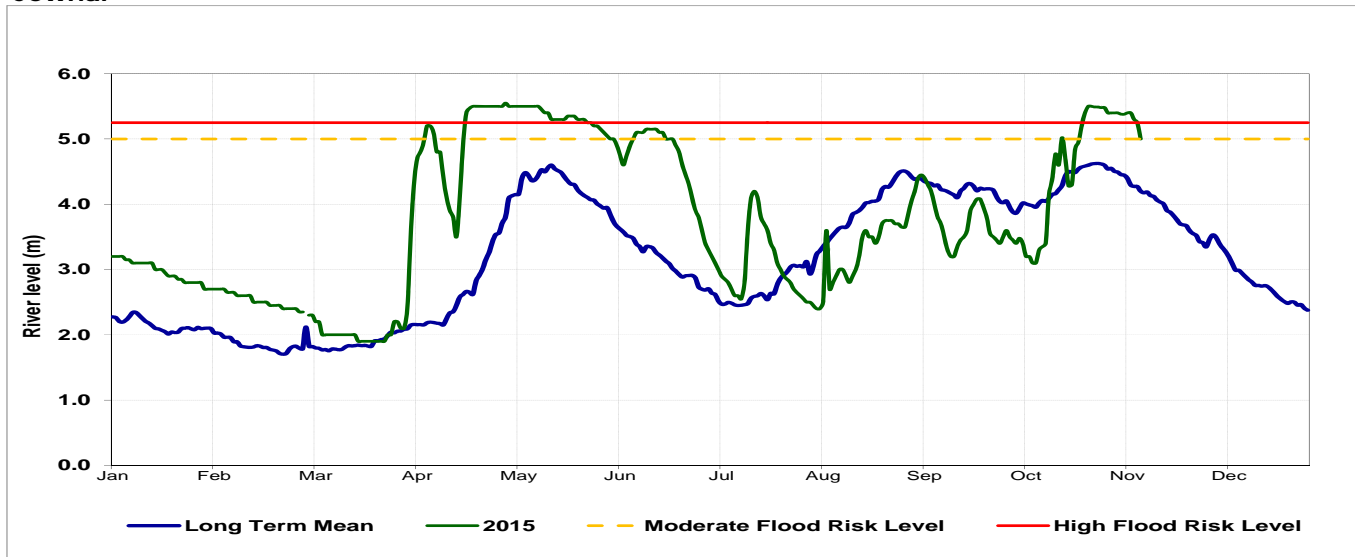
Belet Weyne



Date	Observed River Level (m)	Moderate Flood Risk Level (m)	High Flood Risk Level (m)
10/11/2015	5.00	6.50	7.30

Observed river levels at Belet Weyne increased last week and dropped towards the end of the week . Today’s river level is 5.0m which is 2.30m below the high risk flood level.

Jowhar



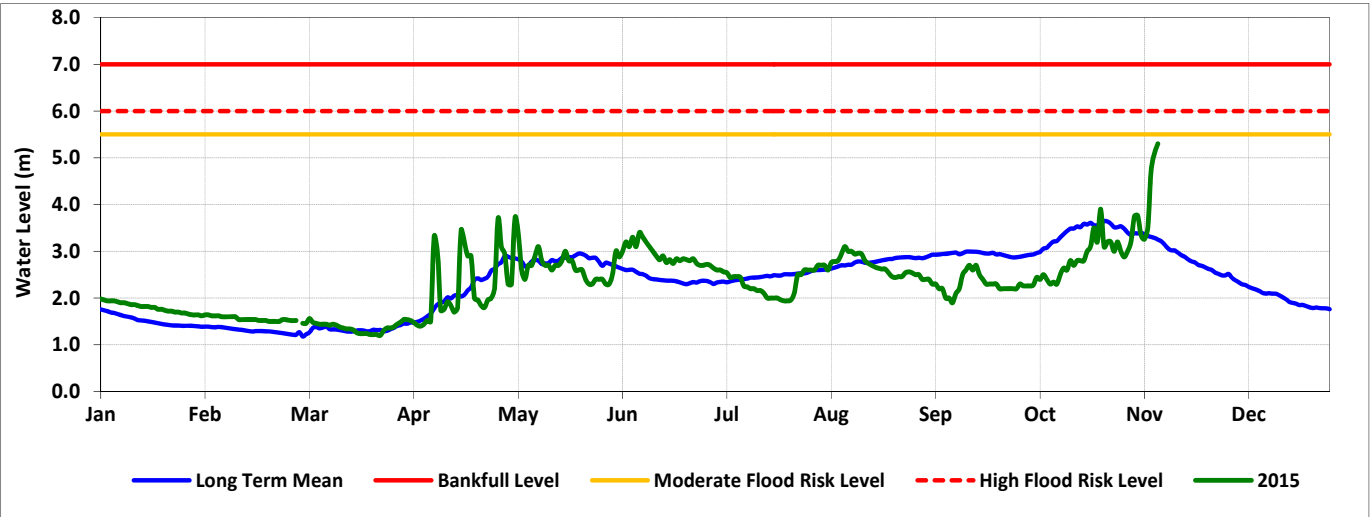
Date	Observed River Level (m)	Moderate Flood Risk Level (m)	High Flood Risk Level (m)
10/11/2015	5.20	5.00	5.25

Observed river levels at Jowhar remained high through out the week with a slight decrease over the last two days. Today’s river level is 5.20m, which a few centimeters from the high risk flood level.

Forecast for coming week for Shabelle

There remains a high risk of flooding in the middle and lower reaches of Shabelle River during the coming week.

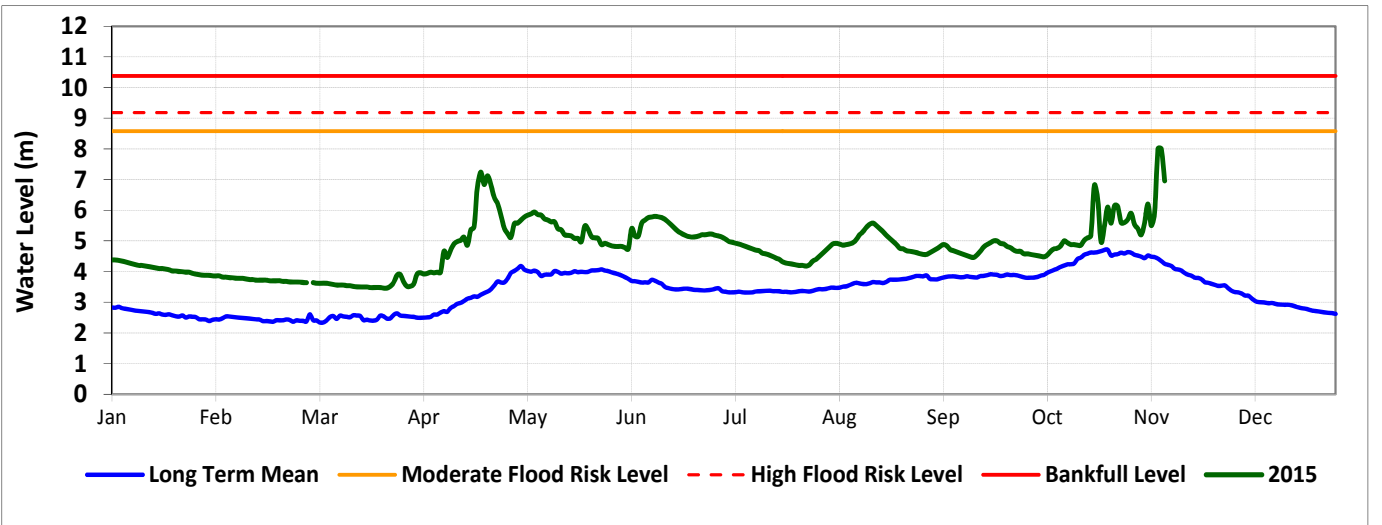
Luuq



Date	Observed River Level (m)	Moderate Flood Risk Level (m)	High Flood Risk Level (m)
10/11/2015	5.30	5.50	6.00

Observed river level at Luuq increased over the last week. Today’s river level is 5.30m which is 0.70m below the high risk flood level.

Bardheere



Date	Observed River Level (m)	Moderate Flood Risk Level (m)	High Flood Risk Level (m)
10/11/2015	7.90	8.58	9.18

Observed river levels at Bardheere increased sharply over the last few days. Today’s river level is 7.90m which is 1.28m below the high risk flood level.

Forecast for coming week for Juba

There is a high risk of flooding foreseen in the coming week in the middle and lower reaches of Juba river especially in locations where there are existing open river breakages.