

# Somalia Flood Watch

Issued: 11<sup>th</sup> November, 2014



## FLOOD WARNING LEVEL

	Last Week	Coming Week
Shabelle		
Juba		

## KEY TO WARNING LEVELS

Severe Flooding Possible

Moderate Flooding (up to 5 year return period)

Minimal/No Flood Risk

During the week ending on 10 November, 2014, there was a reduction of rainfall activities within the Juba and Shabelle river basins both inside Somalia and within the Ethiopian highlands.

The table below show some stations that recorded rains in the past one week; while Map - 1 shows the total satellite Rainfall Estimates (RFE) for the same reporting period. Map -2 shows the rainfall forecast for coming week.

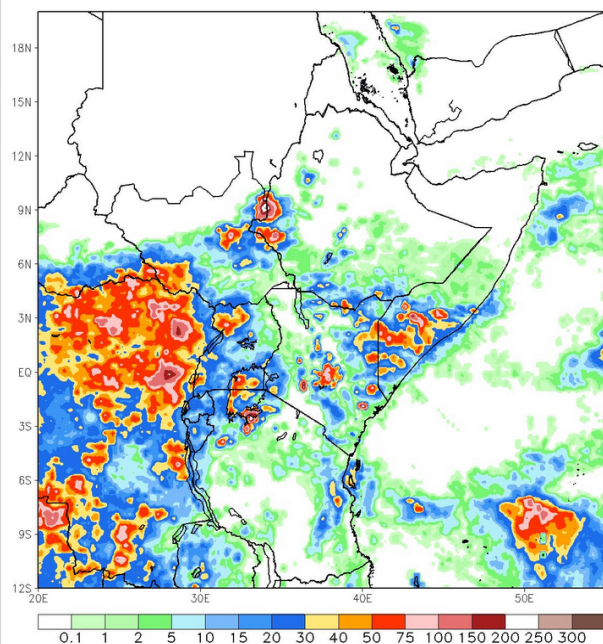
Station Name	Luuq	Bardheere	Buulle	Wanle Weyne	Bulo Burti	Jowhar	Belet Weyne
Rainfall (mm)	50.0	42.0	17.0	18.0	0.0	19.0	20.0

The rainfall forecast for the coming week (Map - 2) indicates light to moderate rains within the two basins both inside Somalia and within the Ethiopian highlands.

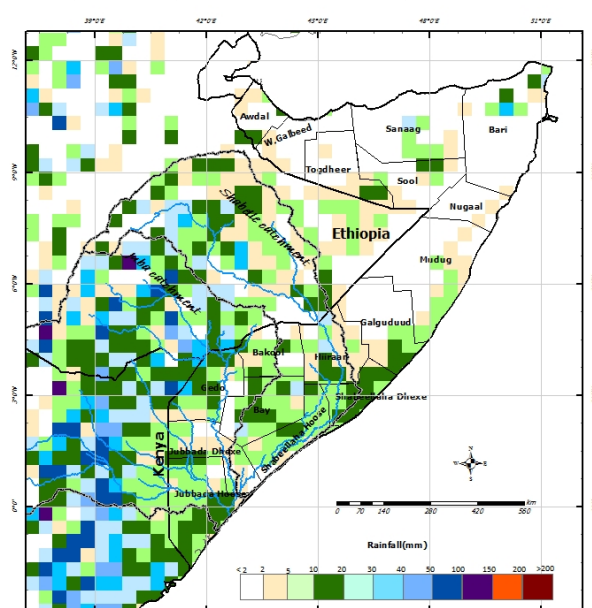
River levels in the upstream stations along the Juba and Shabelle (Luuq and Belet Weyne respectively) decreased significantly over the last week. The levels in the lower reaches of the two rivers remain high and are expected to go down towards the end of coming week.

Given the rainfall forecast and the significant reduction of the river level the flood risk level changes to **moderate** level along the lower reaches of the two rivers.

Map -1: Total RFE: Week ending 10/11/2014



Map-2: 7-Day Rainfall Forecast: up to 17/11/2014



This bulletin is produced by the FAO Somalia Water and Land Information Management (SWALIM). For more information send an e-mail to [SO-Hydro@fao.org](mailto:SO-Hydro@fao.org) or visit <http://www.faoswalim.org>

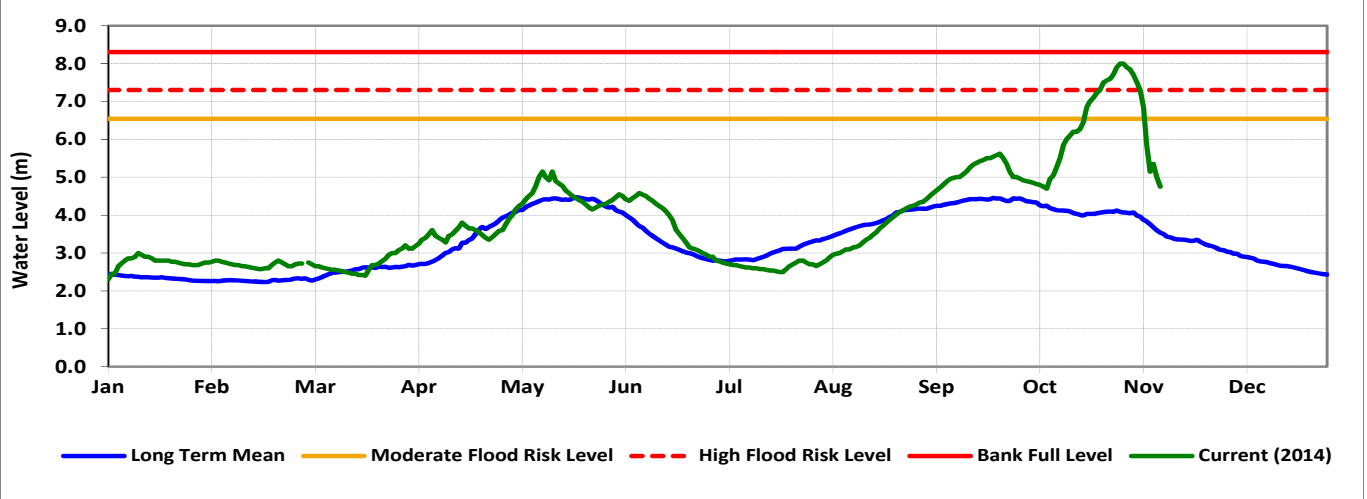
## Technical Partners



## SWALIM Funding Agencies



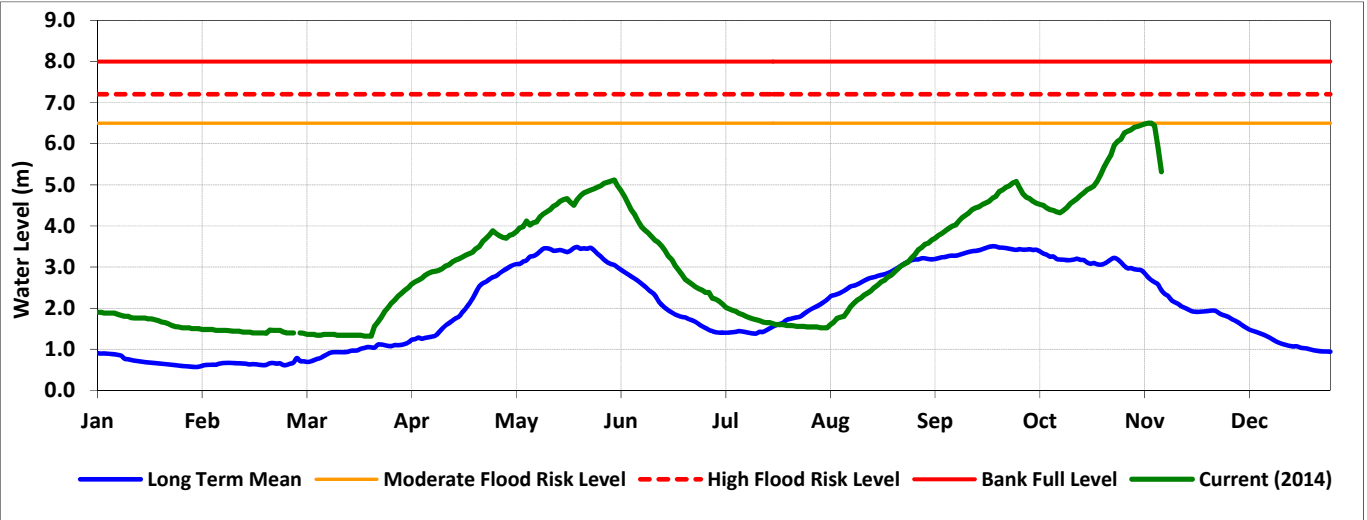
**Belet Weyne**



Date	Observed River Level (m)	Moderate Flood Risk Level (m)	High Flood Risk Level (m)
11 - Nov-14	4.75	6.50	7.30

Observed river levels at Belet Weyne decreased towards the end of last week. Today’s river level is 4.75m which is 2.55m below the high risk flood level.

**Bulo Burti**

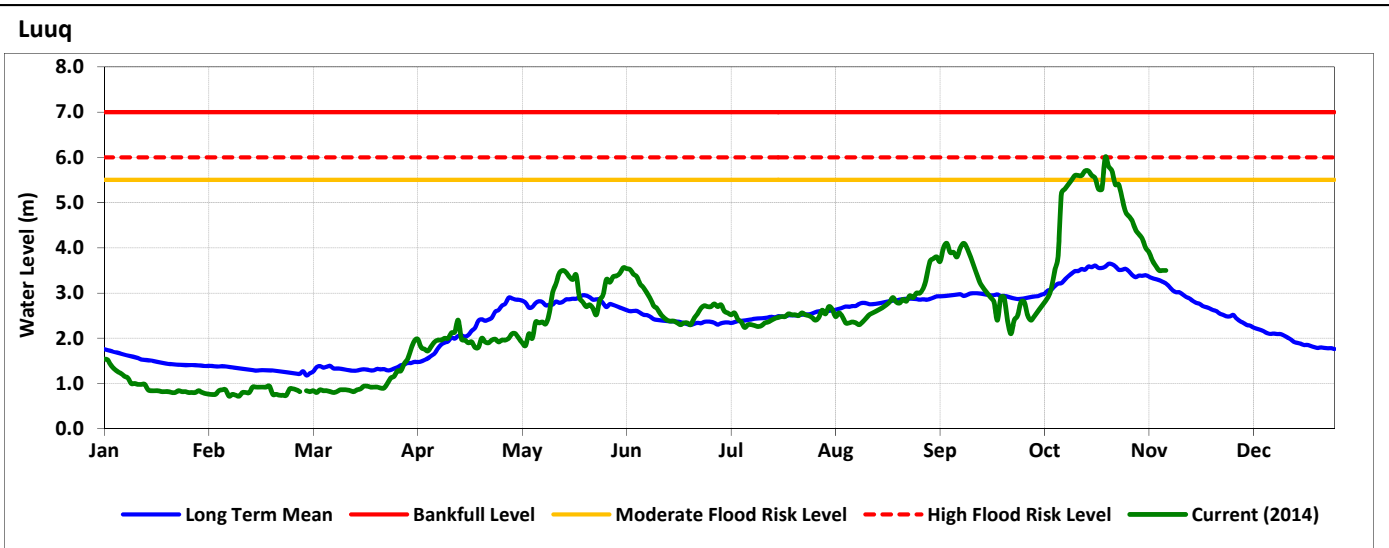


Date	Observed River Level (m)	Moderate Flood Risk Level (m)	High Flood Risk Level (m)
11-Nov-14	6.45	6.50	7.20

Observed river levels at Bulo Burti decreased over the last week. Today’s river level is 5.32m which is 1.88m below the high risk flood level.

**Forecast for coming week for Shabelle**

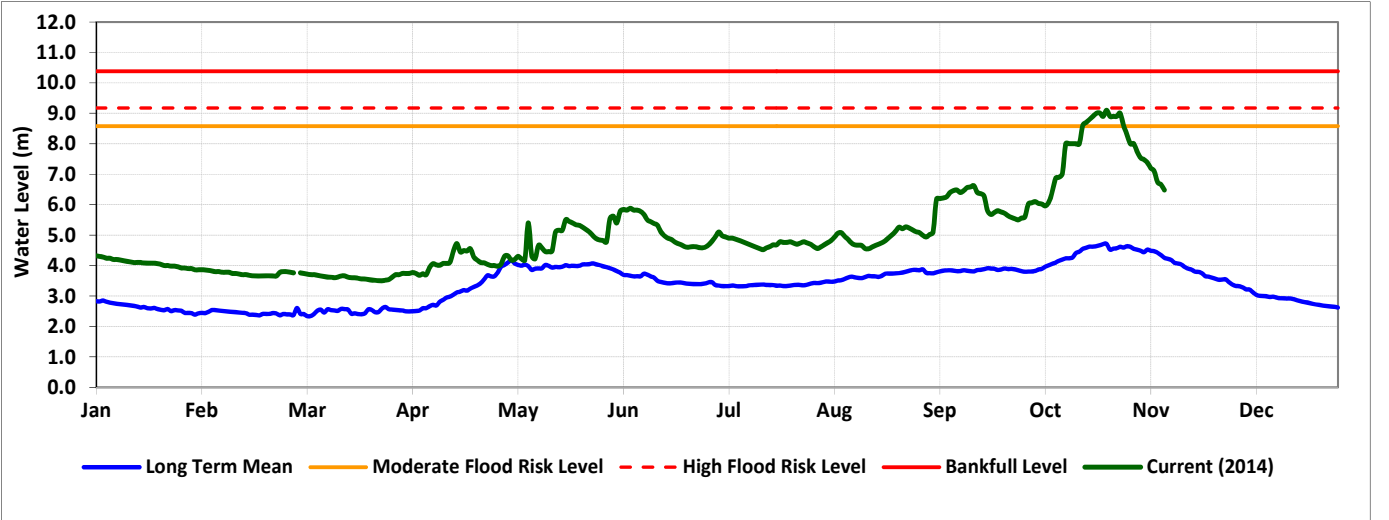
Given the rainfall forecast for coming week of reduced rainfall and the current decreasing river levels, the high risk of flooding changes to moderate level especially in the lower reaches of the river.



Date	Observed River Level (m)	Moderate Flood Risk Level (m)	High Flood Risk Level (m)
11 -Nov-14	4.00	5.50	6.00

Observed river level at Luuq continued to decrease over the last week. Today’s river level is 3.5m which is 2.00m below the high risk flood level.

**Bardheere**



Date	Observed River Level (m)	Moderate Flood Risk Level (m)	High Flood Risk Level (m)
11 -Nov-14	6.48	7.42	8.20

Observed river levels at Bardheere decreased sharply over the last week. Today’s river level is 6.48m which is 1.72m below the high risk flood level.

**Forecast for coming week for Juba**

The high risk of flooding along there Juba River changes to moderate risk of flooding during the coming week.