



Somalia Flood Watch

Issued: 13th May, 2014



FLOOD WARNING LEVEL

	Last Week	This week	Next Week
Shabelle			
Juba			

KEY TO WARNING LEVELS

Severe Flooding Possible

Moderate Flooding (up to 5 year return period)

Minimal/No Flood Risk

There was an increase of rainfall activities in most parts of the Juba and Shabelle river basins inside Somalia. A few places recorded heavy rains on 8th and 9th May 2014 causing localized flooding in the areas. The upper parts of Gedo however did not record any rains. The table below shows the total rainfall amounts recorded in selected stations within the two basins in Somalia:

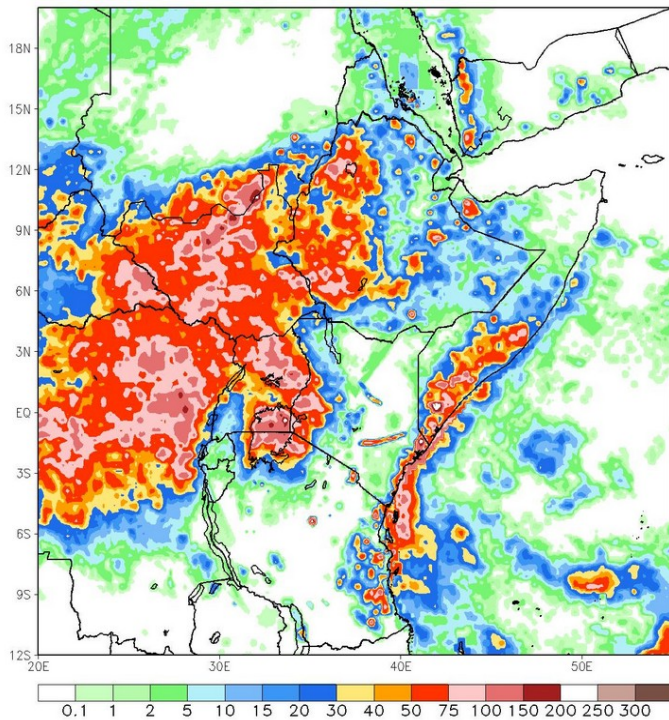
Station Name	Luuq	Bardheere	Mataban	Belet Weyne	Bulo Burti	Jowhar	BurHakaba
Rainfall (mm)	0.0	142.0	30.0	86.0	55.0	79.0	10.5

The 7-day cumulative satellite rainfall estimate (RFE) image (Map – 1) indicates moderate rains were received within the Juba and Shabelle basins both in Somalia and light within the Ethiopian highlands.

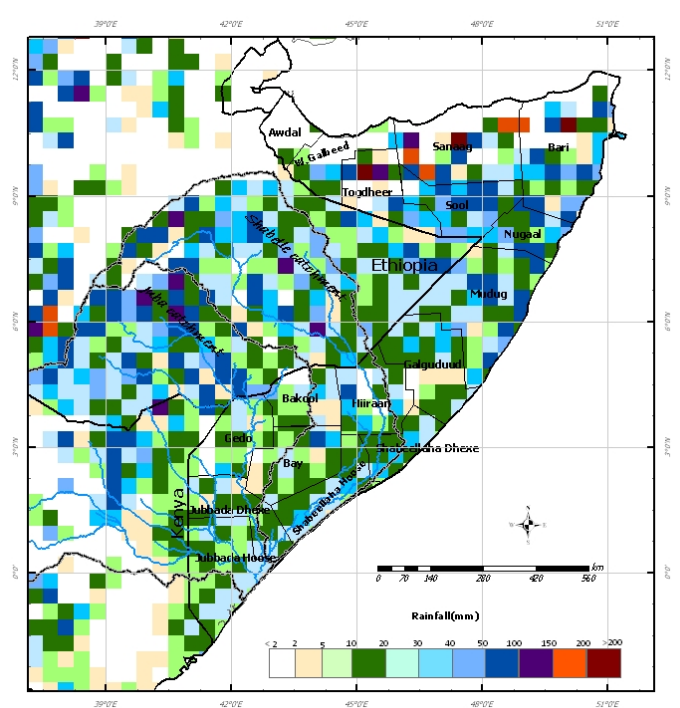
The rainfall forecast for the coming week (Map – 2) is pointing towards moderate to heavy rains within the Shabelle and Juba basins both in Ethiopia and Somalia.

The river levels are within normal along the two rivers and there is no foreseen risk of flooding in the coming week.

Map –1: Total RFE: Week ending 12/05/2014



Map-2: 7-Day Rainfall Forecast: up to 19/05/2014



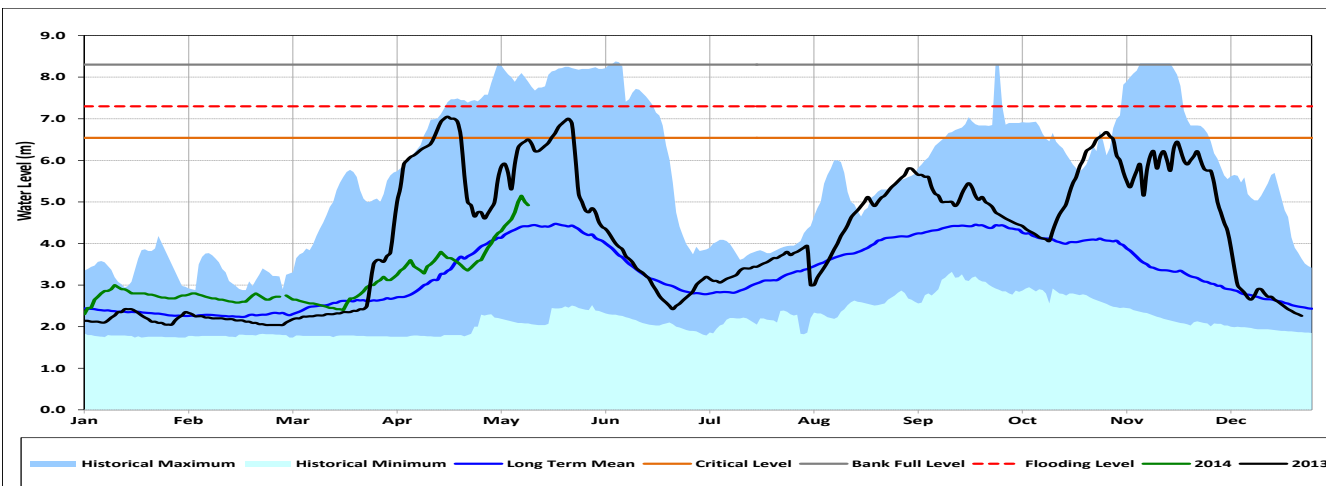
This bulletin is produced by the FAO Somalia Water and Land Information Management (SWALIM) Project, in collaboration with USGS and, FEWS NET Somalia.



For more information send an e-mail to SO-Hydro@fao.org or visit <http://www.faoswalim.org>



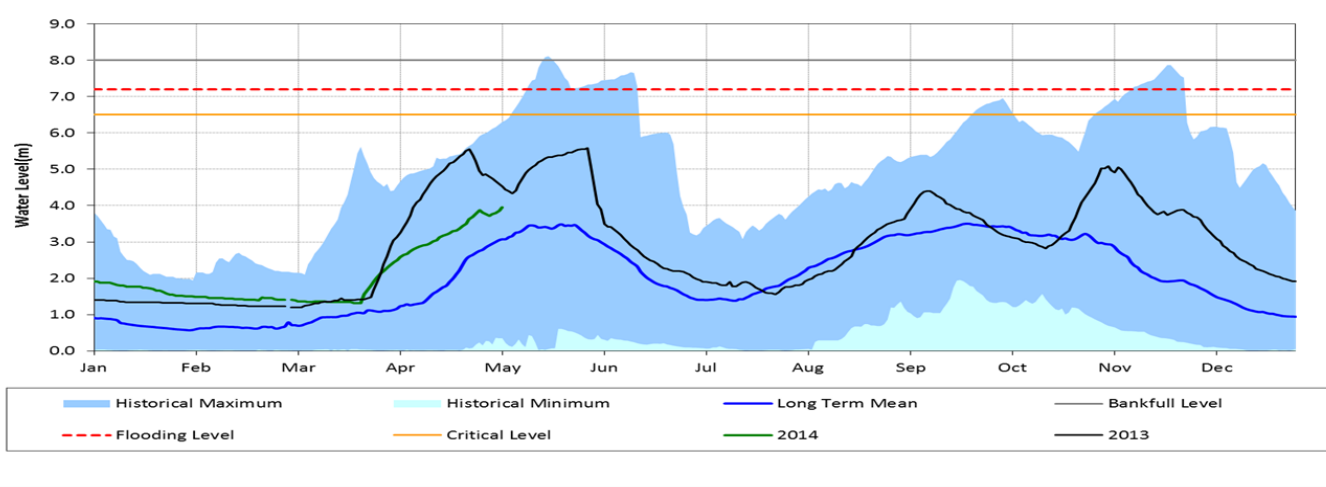
Belet Weyne



Date	Current river level	Relative position of current river level from:			
		Previous day	Low Flood Risk	Moderate Flood Risk	High Flood Risk
13-May-13	5.15	0.23	0.75	1.35	2.15
12-May-13	4.92	-0.23	0.98	1.58	2.38
11-May-13	5.15	0.15	0.75	1.35	2.15

Today's river level at Belet Weyne is 5.15m which is 2.15m below the high risk flood level.

Bulo Burti



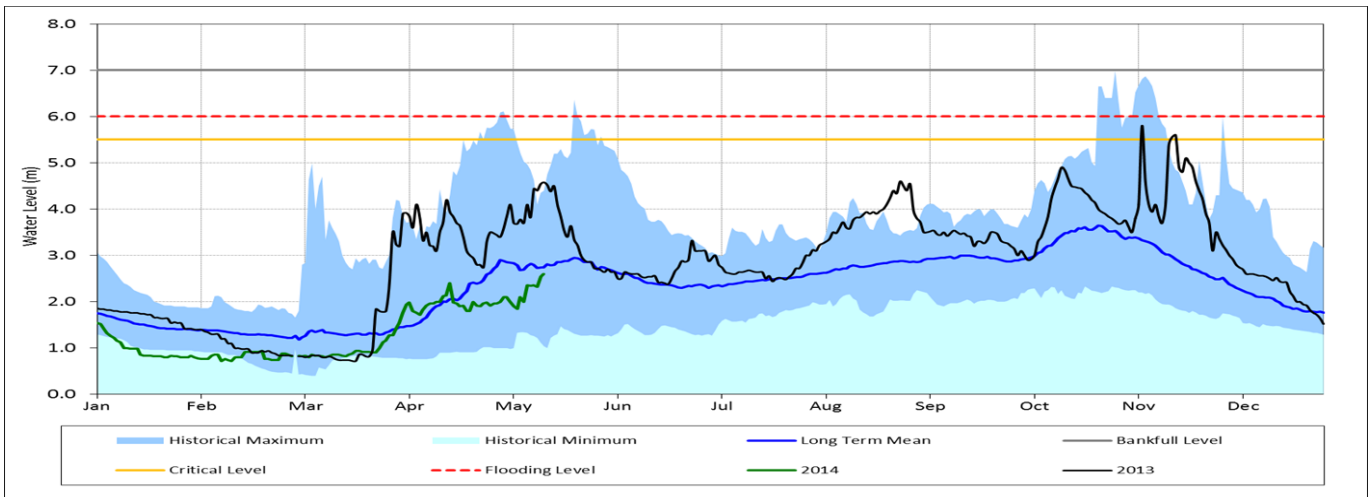
Date	Current river level	Relative position of current river level from:			
		Previous day	Low Flood Risk	Moderate Flood Risk	High Flood Risk
13-May-13	4.29	0.07	1.71	2.21	2.91
12-May-13	4.22	0.12	1.78	2.28	2.98
11-May-13	4.10	0.02	1.90	2.40	3.10

Observed river levels at Bulo Burti increased over the last week. Today's river level is 4.29m which is 2.91m below the high risk flood level.

Forecast for coming week for Shabelle

Given the rainfall forecast for coming week, the observed river levels are likely to increase slightly with minimal risk of flooding.

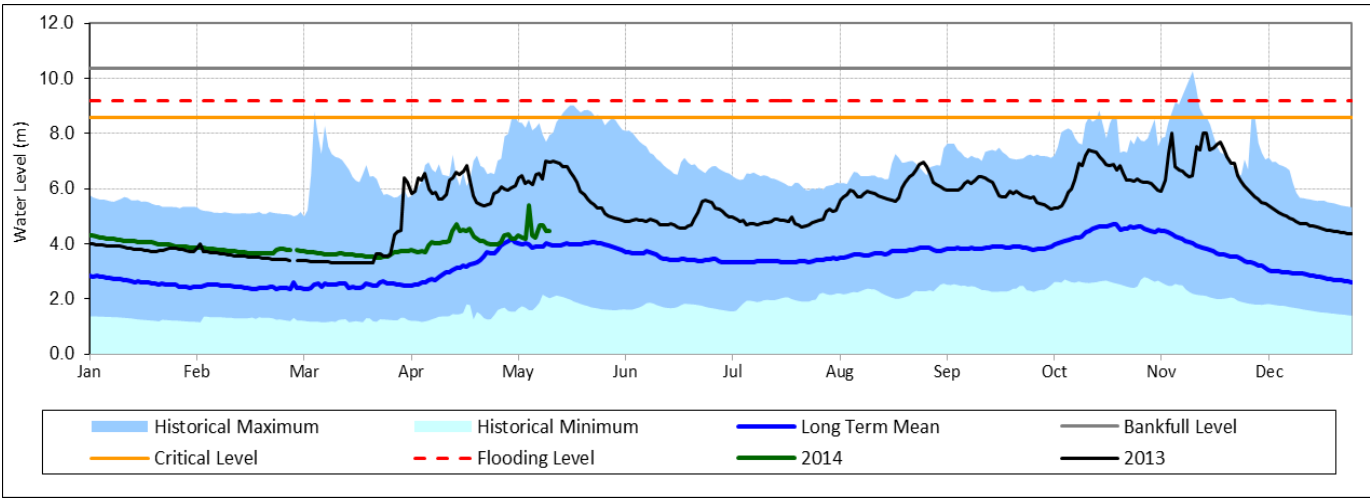
Luuq



Date	Current river levels	Relative position of current river levels from:			
	Levels	Previous day	Low Flood Risk	Moderate Flood Risk	High Flood Risk
13-May-13	2.60	-0.10	2.60	2.90	3.40
12-May-13	2.50	-0.20	2.70	3.00	3.50
11-May-13	2.30	0.10	2.90	3.20	3.70

Observed river levels at Luuq increased gradually over the last week following moderate rains reported in the Ethiopian highlands. Today's river level is 2.60m which is 3.40m below the high risk flood level.

Bardheere



Date	Current river levels	Relative position of current river levels from:			
	Levels	Previous day	Low Flood Risk	Moderate Flood Risk	High Flood Risk
13-May-13	4.46	0.00	3.72	4.12	4.72
12-May-13	4.46	-0.22	3.72	4.12	4.72
11-May-13	4.68	0.02	3.50	3.90	4.50

Observed river levels at Bardheere fluctuated over the last week. Today's river level is 4.46m which is 4.72m below the high risk flood level.

Forecast for coming week for Juba

There is no foreseen risk of flooding during the forecast period.