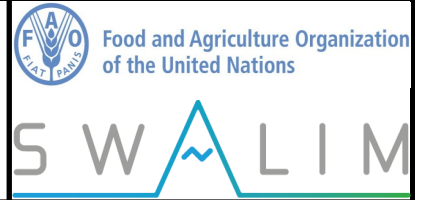


Somalia Flood Watch

Issued: 14 November 2017



FLOOD WARNING LEVEL

	Last Week	Coming Week
Shabelle		
Juba		

KEY TO WARNING LEVELS

Severe Flooding Possible

Moderate Flooding (up to 5 year return period)

Minimal/No Flood Risk

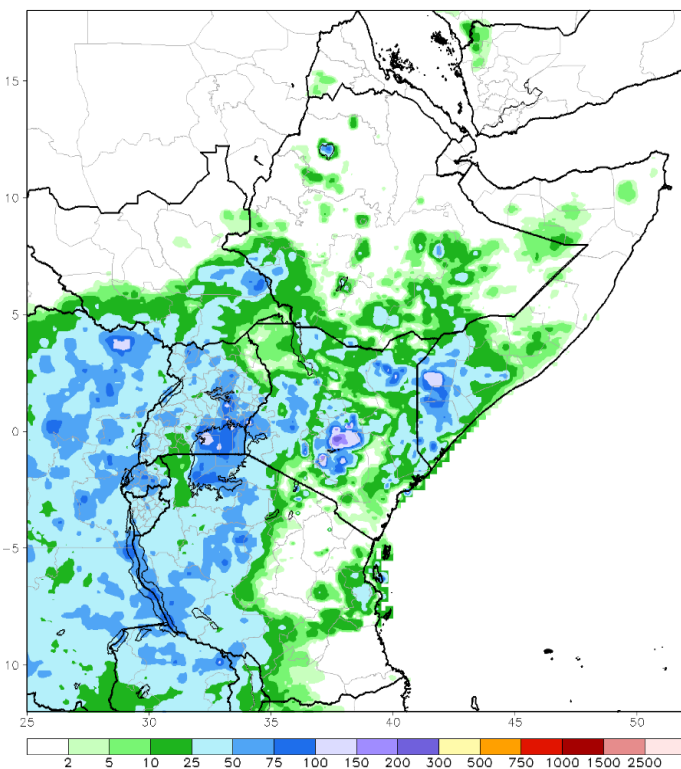
During the week ending on 13 November 2017, the Juba and Shabelle river basins experienced heavy rains both inside Somalia and within the Ethiopian highlands. In Bay region, Qansax Dheere and Dinsor stations recorded a total of 426mm and 376mm respectively while Baidoa town received 125mm in the last 10 days. The heavy rains consequently led to increased river levels causing riverine flooding in sections of the rivers and flash floods elsewhere. The upper parts of the Ethiopian highlands continued to receive good rains during the same period. Map - 1 shows the total satellite Rainfall Estimates (RFE) which also indicates heavy amounts of rainfall in the basins.

The rainfall forecast for the coming week (Map – 2) indicates a significant reduction of rainfall amounts in the coming week both in the Ethiopian highlands and inside Somalia.

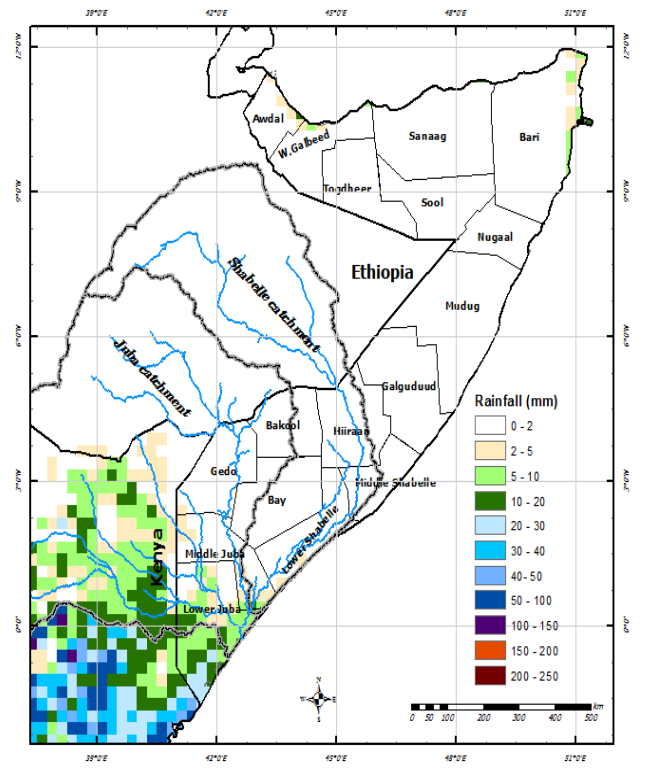
Following the heavy rains seen in the last week, the levels along the two rivers rose significantly and are currently above normal at this time of the year. However, this is expected to stabilize towards the end of the week given the rainfall forecast.

There remains a **high** risk of flooding along the middle and lower reaches of Juba and Shabelle Rivers.

Map –1: Total RFE: Week ending 13 Nov 2017



Map-2: 7-Day Rainfall Forecast: up to 20 Nov 2017

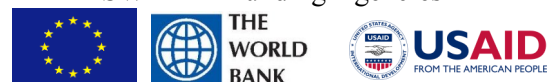


This bulletin is produced by the FAO Somalia Water and Land Information Management (SWALIM). For more information send an e-mail to SO-Hydro@fao.org or visit <http://www.faoswalim.org>

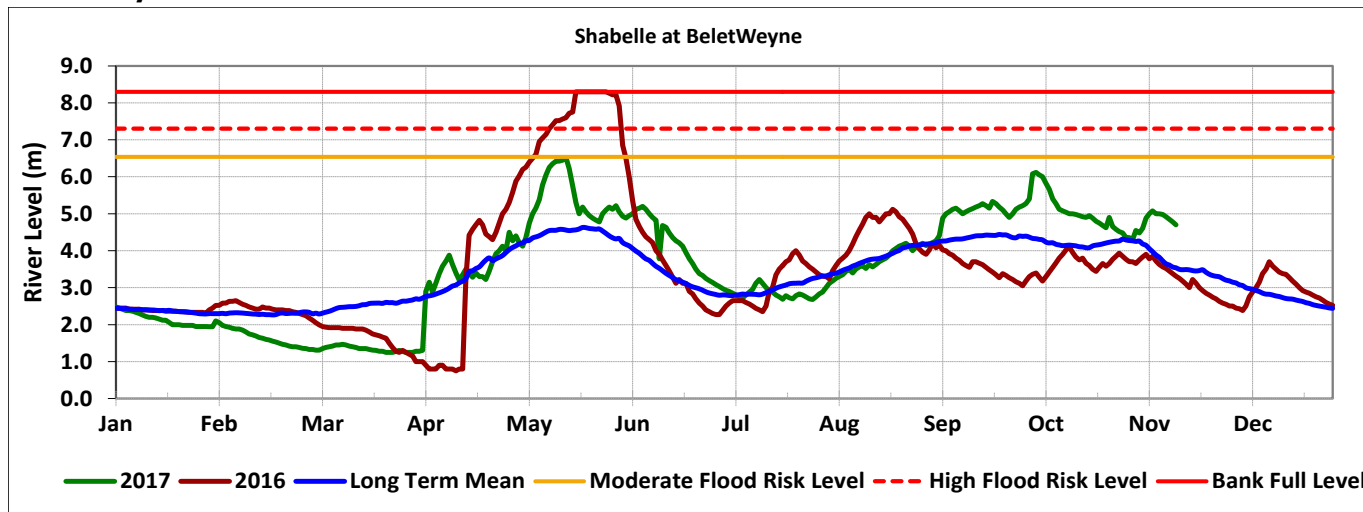
Technical Partners



SWALIM Funding Agencies



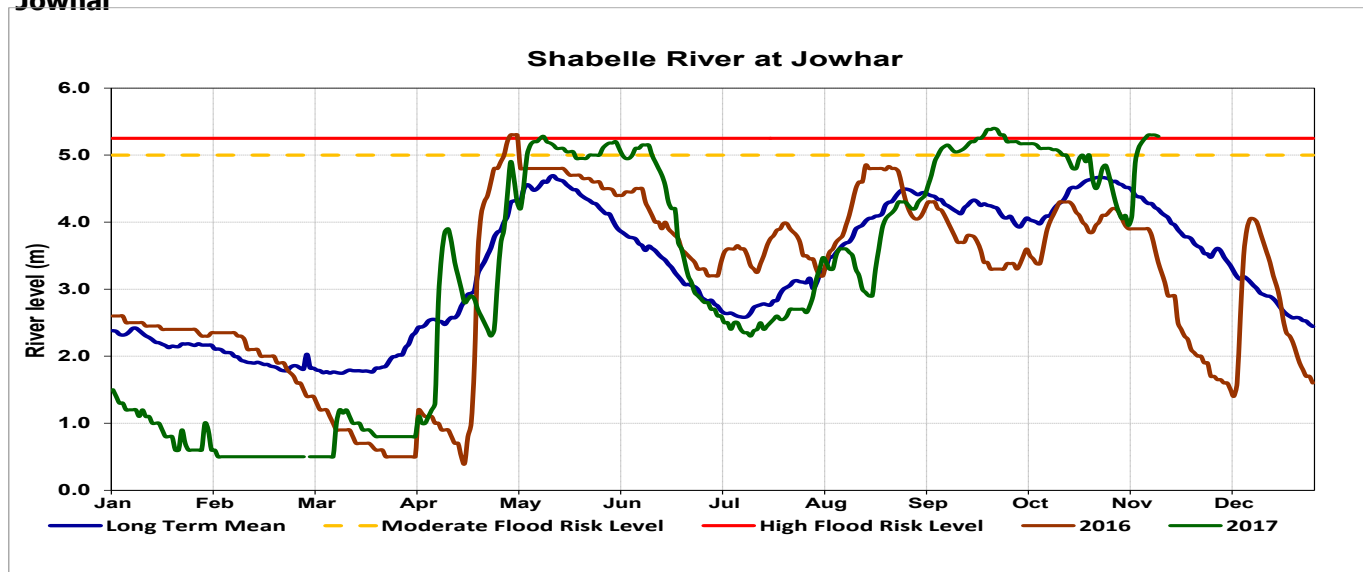
Belet Weyne



Date	Observed River Level (m)	Moderate Flood Risk Level (m)	High Flood Risk Level (m)
14 Nov 2017	4.70	6.50	7.30

Observed river levels at Belet Weyne increased slightly at the beginning of last week and dropped towards the end of the week. With no rainfall foreseen in the catchment, the river levels are expected to drop and stabilize towards the end of the week.

Jowhar



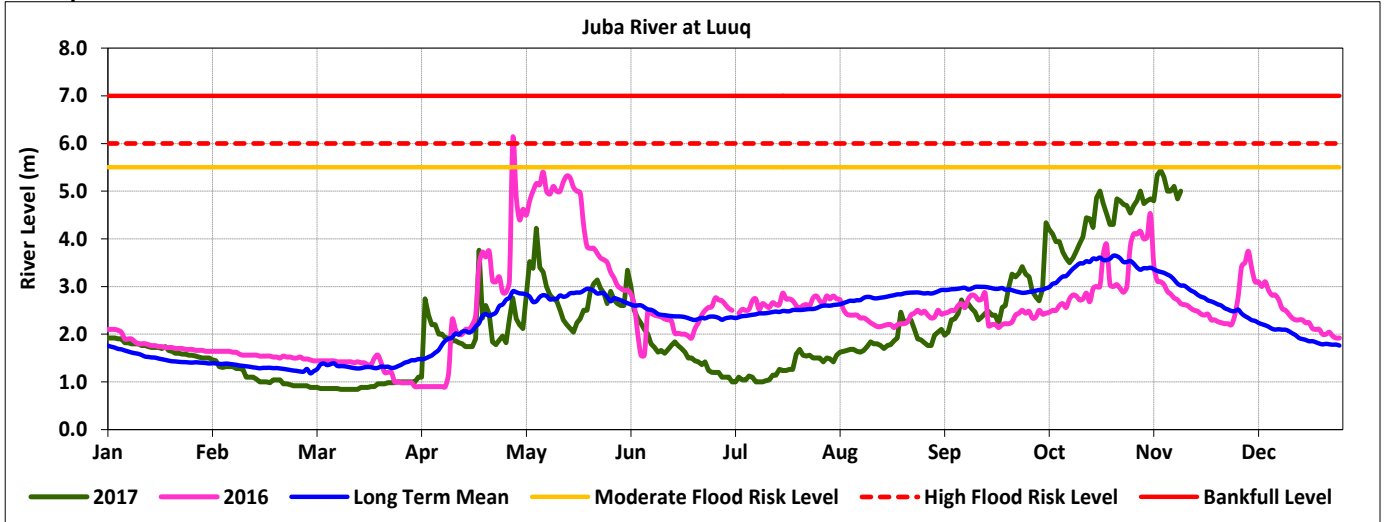
Date	Observed River Level (m)	Moderate Flood Risk Level (m)	High Flood Risk Level (m)
02 Nov 2017	5.28	5.00	5.25

Observed river levels at Jowhar, which is in the middle parts of the river, remains very high and has surpassed the high risk of flooding level. This is expected to be transmitted into the downstream which may lead to increased river levels and overflows.

Forecast for coming week for Shabelle

While there remains a high risk of flooding in the lower reaches of Shabelle, the river levels in the upper stations are expected to decrease significantly throughout the week given the rainfall forecast in the same period.

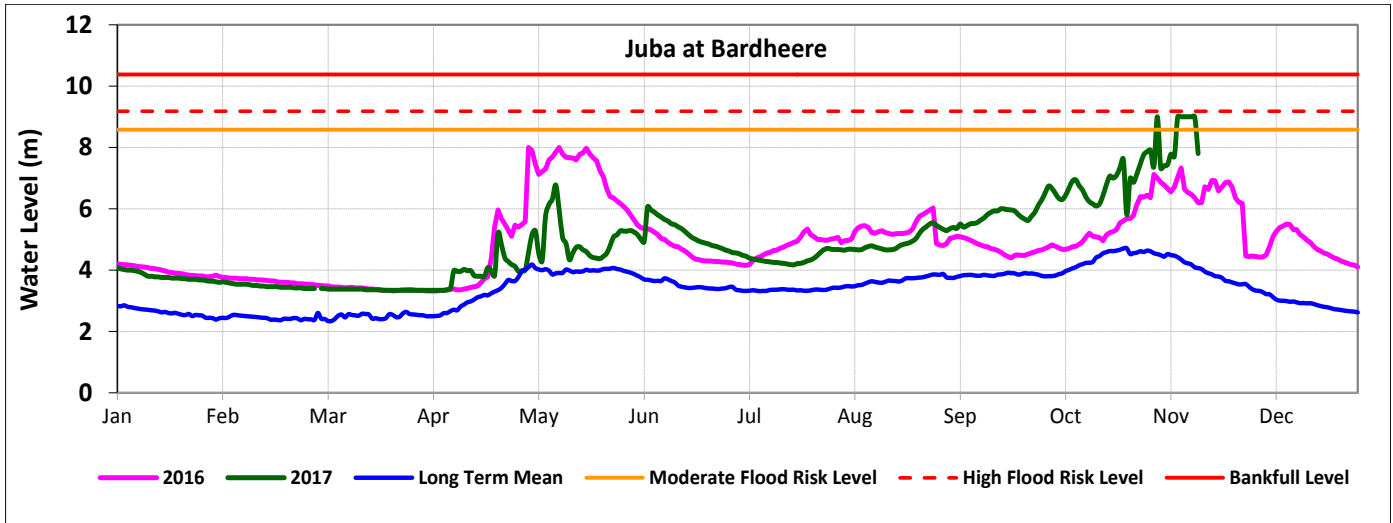
Luuq



Date	Observed River Level (m)	Moderate Flood Risk Level (m)	High Flood Risk Level (m)
14 Nov 2017	5.00	5.50	6.00

Observed river level at Luuq fluctuated over the last week. Today’s river level is 5.00m which is 1.0m below the high flood risk level.

Bardheere



Date	Observed River Level (m)	Moderate Flood Risk Level (m)	High Flood Risk Level (m)
14 Nov 2017	7.18	8.58	9.18

Observed river levels at Bardheere increased sharply over the last few days and reached the high risk flooding level. This has however decreased over the last 24hours and today's reading is 7.18m.

Forecast for coming week for Juba

There is a moderate to high risk of flooding in the lower reaches of Juba River in the coming week given the high river levels. The levels are however expected to stabilize towards the end of the week.