

# Somalia Flood Watch

Issued: 17<sup>th</sup> November, 2015



## FLOOD WARNING LEVEL

## KEY TO WARNING LEVELS

	Last Week	Coming Week
Shabelle		
Juba		

**Severe Flooding Possible**

**Moderate Flooding (up to 5 year return period)**

**Minimal/No Flood Risk**

During the week that ended on 16th November 2015, there was a reduction of rainfall activities in most areas of Juba and Shabelle basins inside Somalia as well as the Ethiopian highlands compared to the previous week. Map - 1 shows the total satellite Rainfall Estimates (RFE) for the same reporting period while Map -2 shows the rainfall forecast for coming week.

<b>Station Name</b>	Luuq	Bardheere	Bur Hakaba	Wanle Weyne	Belet Weyne	Mataban
<b>Rainfall (mm)</b>	0.0	0.0	0.0	0.0	40.0	0.0
<b>Station Name</b>	Bulo burti	Jowhar	Balcad	Mogadishu	Jamame	Bualle
<b>Rainfall (mm)</b>	0.0	20.0	22.0	28.0	56.0	40.0

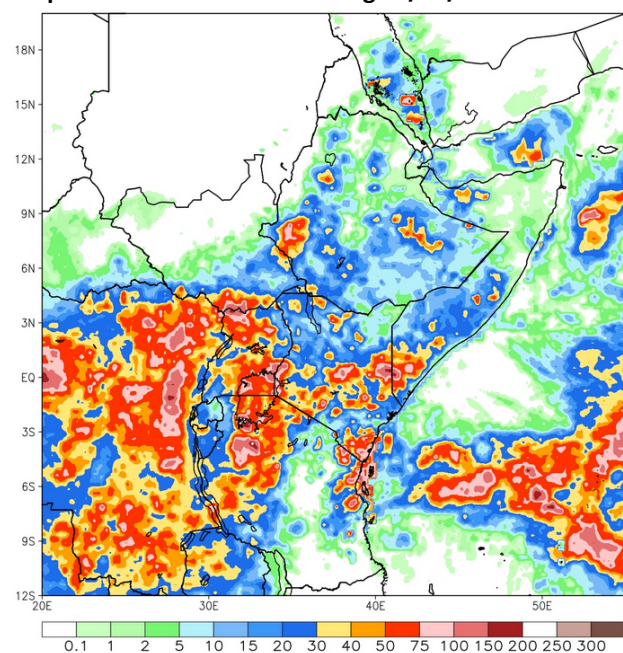
Satellite rainfall estimates (Map-1) also indicates reduction of rainfall amounts during the same period within the Juba and Shabelle basins. The rainfall forecast for the coming week (Map - 2) indicates a further reduction of rainfall activities with light to moderate rains foreseen in both basins inside Somalia and within the Ethiopian highlands.

River levels which had remained high in the previous week along the middle and lower reaches of the two rivers dropped slightly towards the end of the week along the Shabelle while there was a significant drop along the Juba.

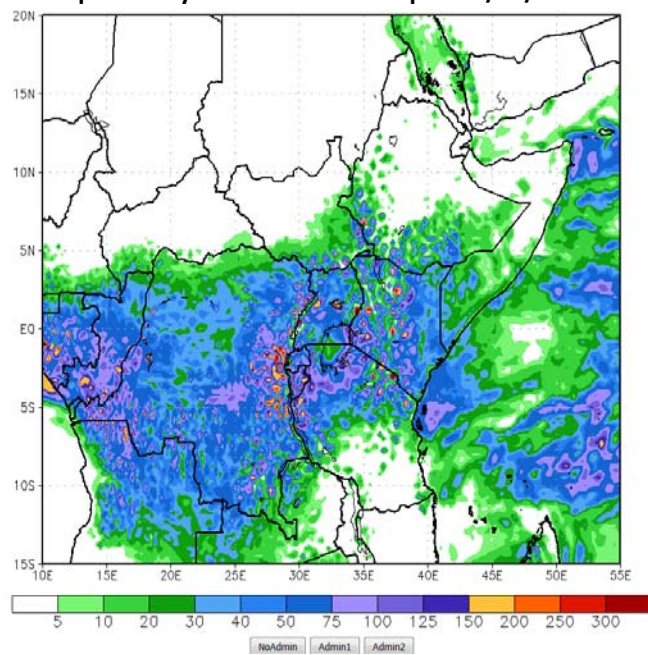
Field reports indicate an increase in river levels in the headwaters of Shabelle River in the Ethiopian highlands. This flood wave is expected to be transmitted to Somalia reaches within the week. Given the rainfall forecast and the current river levels, there remains a **high** risk level of flooding along the middle and lower reaches of Shabelle.

The flood risk level for Juba changes to **moderate** level. However, there is a great concern in Middle and Lower reaches of Juba where there exists open river banks and the situation may get worse with a slight increase in river levels.

Map -1: Total RFE: Week ending 16/11/2015



Map-2: 7-Day Rainfall Forecast: up to 23/11/2015



This bulletin is produced by the FAO Somalia Water and Land Information Management (SWALIM). For more information send an e-mail to [SO-Hydro@fao.org](mailto:SO-Hydro@fao.org) or visit <http://www.faoswalim.org>

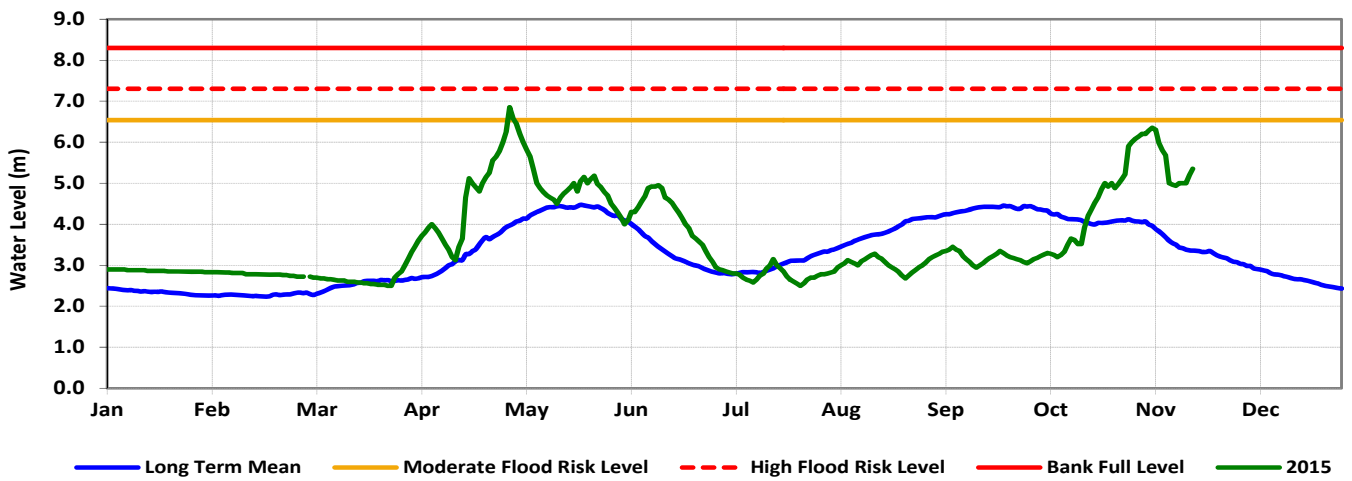
### Technical Partners



### SWALIM Funding Agencies



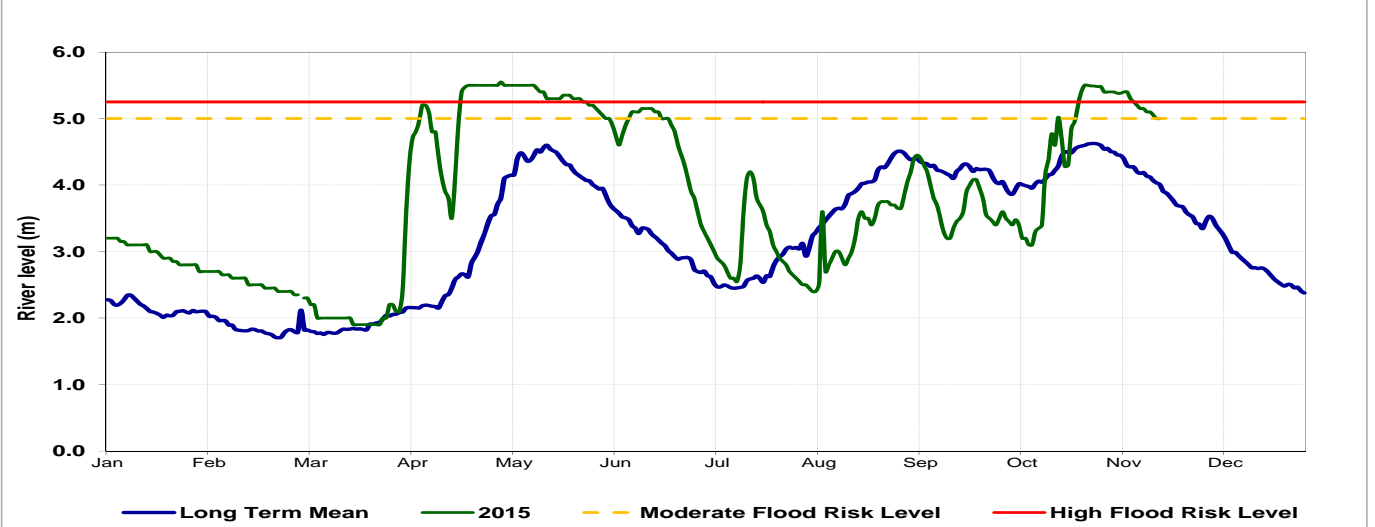
**Belet Weyne**



Date	Observed River Level (m)	Moderate Flood Risk Level (m)	High Flood Risk Level (m)
17/11/2015	5.35	6.50	7.30

Observed river levels at Belet Weyne increased slightly towards the end of last week. Today's river level is 5.35m which is 1.95m below the high risk flood level.

**Jowhar**

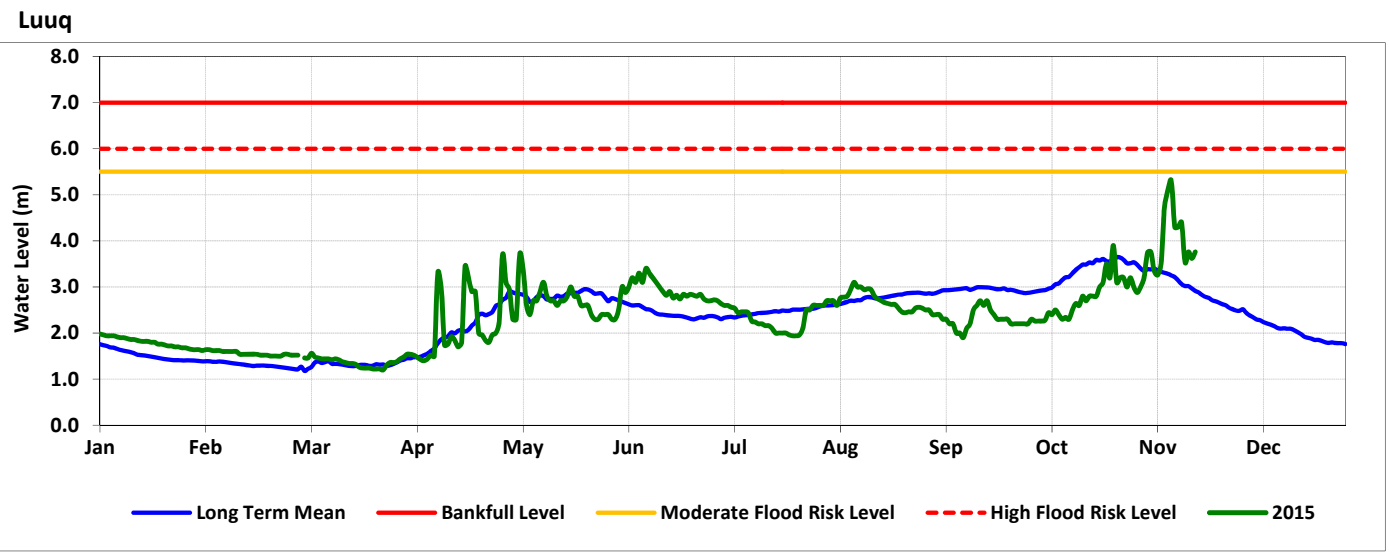


Date	Observed River Level (m)	Moderate Flood Risk Level (m)	High Flood Risk Level (m)
17/11/2015	5.00	5.00	5.25

Observed river levels at Jowhar remained high through out the week with a slight decrease over the last few days. Today's river level is 5.00m which is a few centimetres from the high risk flood level.

**Forecast for coming week for Shabelle**

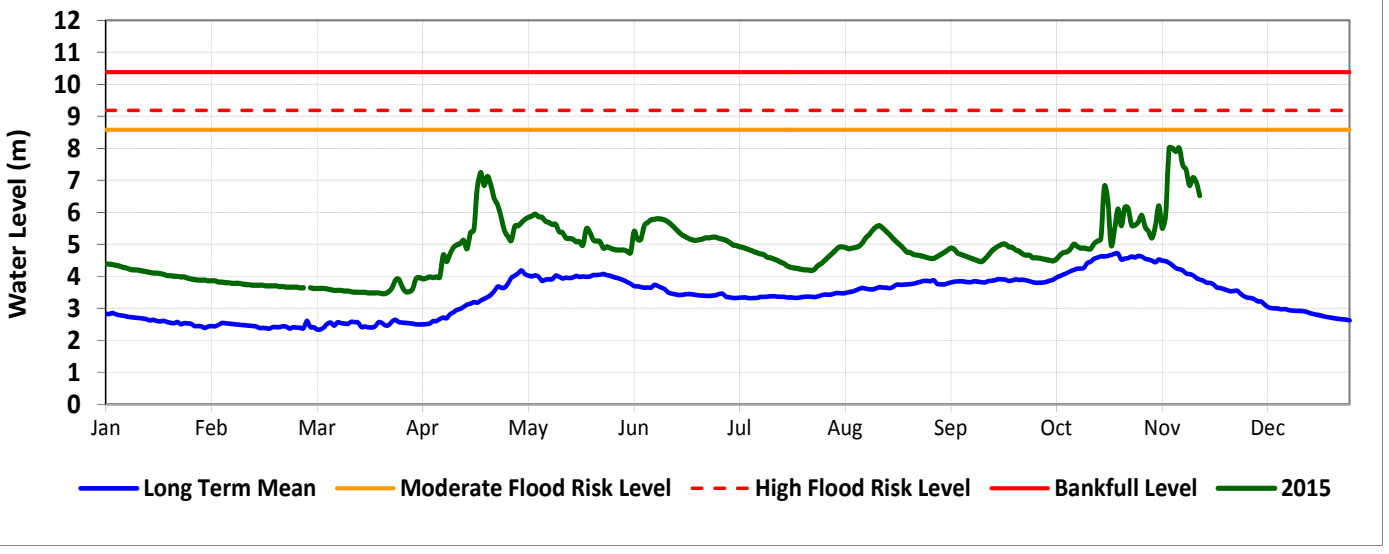
There remains a high risk of flooding in the middle and lower reaches of Shabelle River during the coming week.



Date	Observed River Level (m)	Moderate Flood Risk Level (m)	High Flood Risk Level (m)
17/11/2015	3.76	5.50	6.00

Observed river level at Luuq dropped drastically over the last week. Today’s river level is 3.76m which is 2.24m below the high risk flood level.

**Bardheere**



Date	Observed River Level (m)	Moderate Flood Risk Level (m)	High Flood Risk Level (m)
17/11/2015	6.52	8.58	9.18

Observed river levels at Bardheere decreased over the last few days. Today’s river level is 6.52m which is 2.66m below the high risk flood level.

**Forecast for coming week for Juba**

There is a moderate risk of flooding foreseen in the coming week in the middle and lower reaches of Juba river especially in locations where there are existing open river breakages.