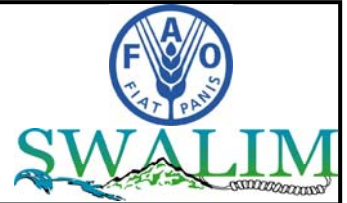


# Somalia Flood Watch

Issued: 18<sup>th</sup> November, 2014



## FLOOD WARNING LEVEL

	Last Week	Coming Week
Shabelle		
Juba		

## KEY TO WARNING LEVELS

**Severe Flooding Possible**

**Moderate Flooding (up to 5 year return period)**

**Minimal/No Flood Risk**

During the week ending on 17 November 2014, there was a reduction of rainfall activities within the Juba and Shabelle river basins both inside Somalia and within the Ethiopian highlands.

The table below show some stations that recorded rains in the past one week; while Map - 1 shows the total satellite Rainfall Estimates (RFE) for the same reporting period. Map -2 shows the rainfall forecast for coming week.

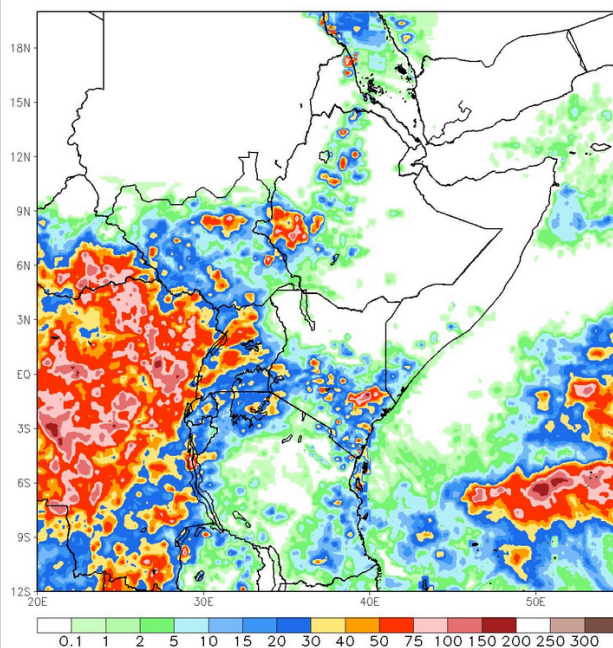
Station Name	Luuq	Bardheere	Buulle	Wanle Weyne	Mogadishu	Jowhar	Belet Weyne
Rainfall (mm)	4.0	0.0	11.0	0.0	25.0	0.0	0.0

The rainfall forecast for the coming week (Map - 2) indicates moderate to heavy rains within the two basins both inside Somalia and within the Ethiopian highlands.

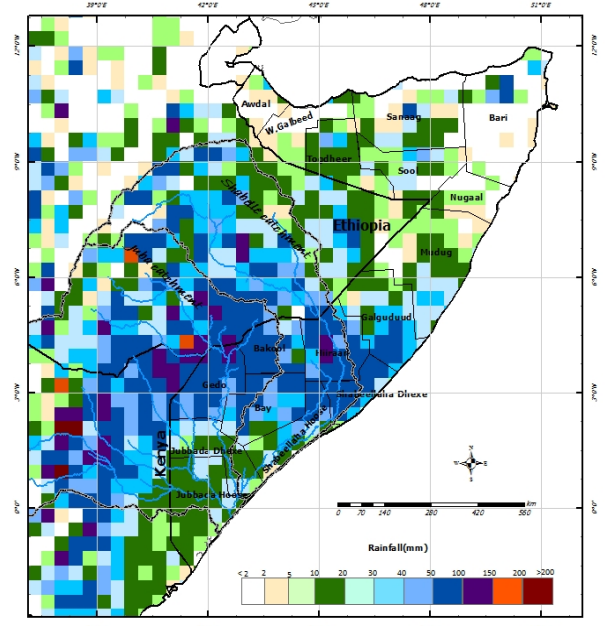
River levels in the upstream stations along the Juba and Shabelle are currently within normal. The levels in the lower reaches of the two rivers remain high.

Given the rainfall forecast and the foreseen rains in the coming week, there remains a moderate risk level of flooding especially in the lower reaches where river levels are still high.

Map -1: Total RFE: Week ending 17/11/2014



Map-2: 7-Day Rainfall Forecast: up to 24/11/2014



This bulletin is produced by the FAO Somalia Water and Land Information Management (SWALIM). For more information send an e-mail to [SO-Hydro@fao.org](mailto:SO-Hydro@fao.org) or visit <http://www.faoswalim.org>

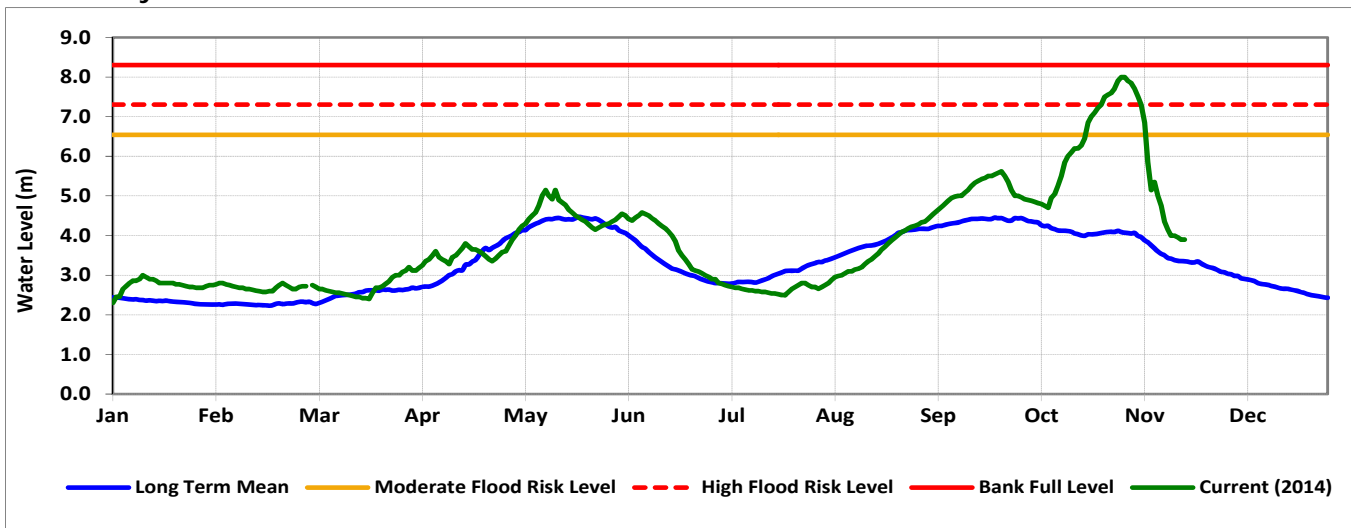
## Technical Partners



## SWALIM Funding Agencies



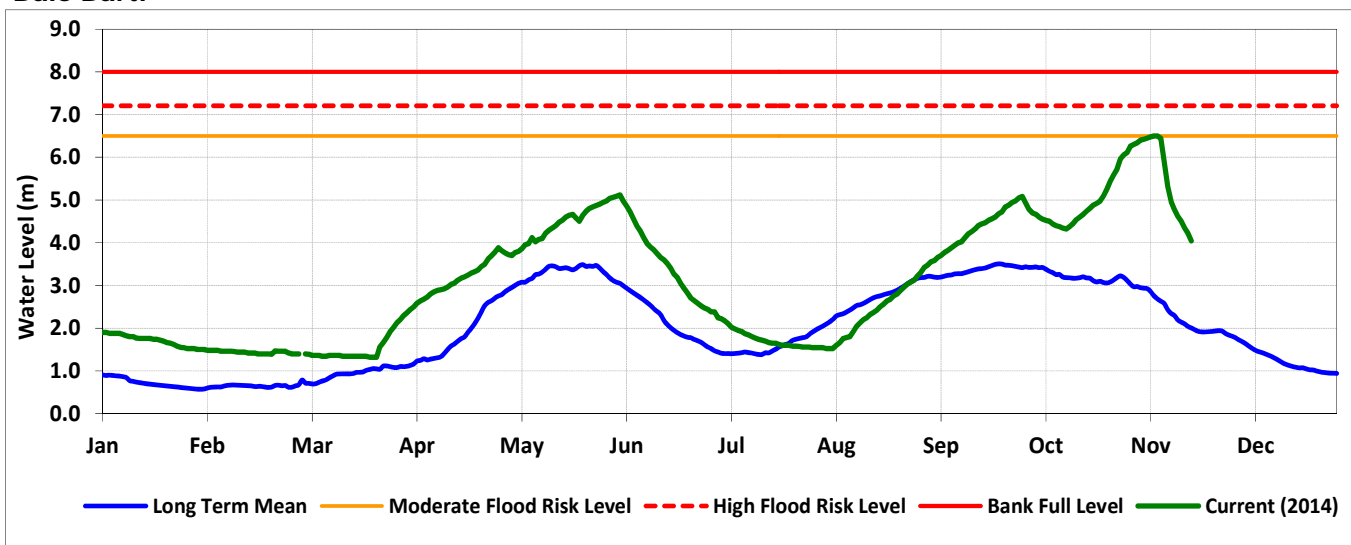
**Belet Weyne**



Date	Observed River Level (m)	Moderate Flood Risk Level (m)	High Flood Risk Level (m)
18- Nov-14	3.90	6.50	7.30

Observed river levels at Belet Weyne continued to decrease in the last week.

**Bulo Burti**

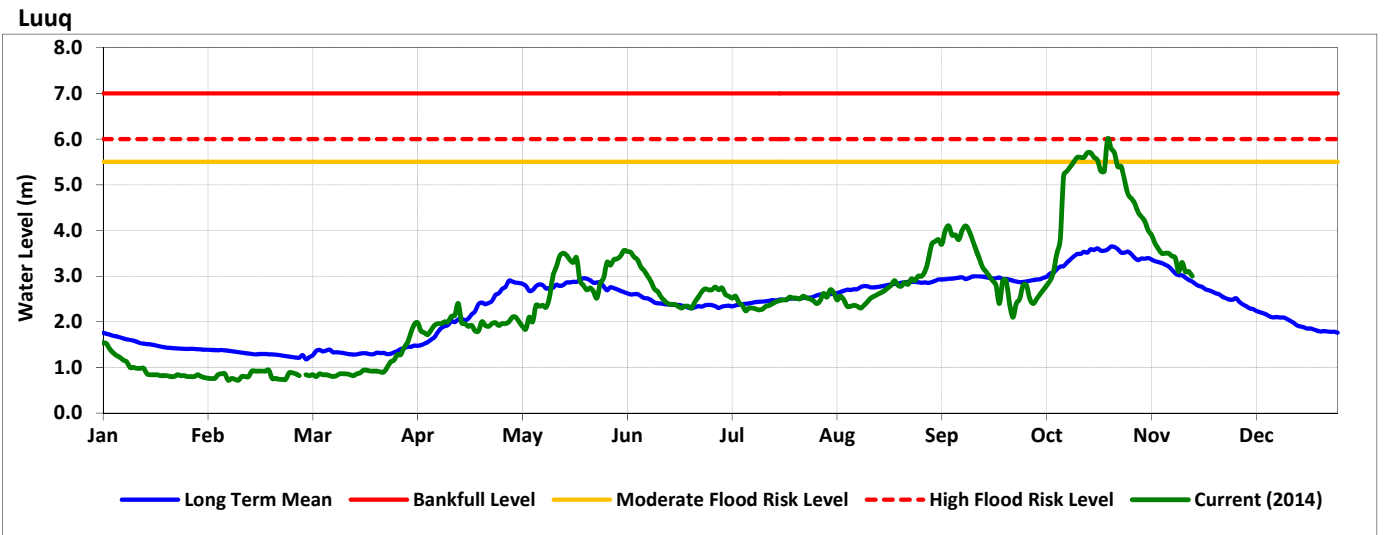


Date	Observed River Level (m)	Moderate Flood Risk Level (m)	High Flood Risk Level (m)
18-Nov-14	4.04	6.50	7.20

Observed river levels at Bulo Burti decreased over the last week. Today’s river level is 4.04m which is 3.16m below the high risk flood level.

**Forecast for coming week for Shabelle**

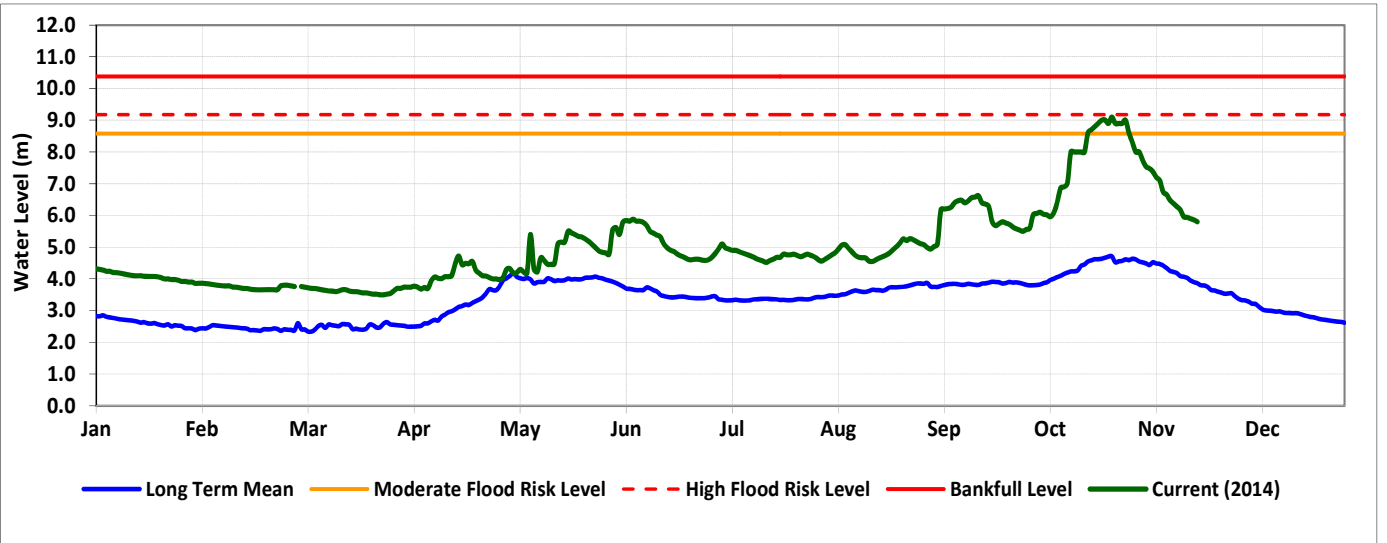
The moderate risk of flooding remains in the lower reaches of the river.



Date	Observed River Level (m)	Moderate Flood Risk Level (m)	High Flood Risk Level (m)
18 -Nov-14	3.00	5.50	6.00

Observed river level at Luuq continued to decrease over the last week. Today’s river level is 3.00m which is 3.00m below the high risk flood level.

**Bardheere**



Date	Observed River Level (m)	Moderate Flood Risk Level (m)	High Flood Risk Level (m)
18 -Nov-14	5.80	7.42	8.20

Observed river levels at Bardheere decreased sharply over the last week. Today’s river level is 5.80m which is 2.40m below the high risk flood level.

**Forecast for coming week for Juba**

The moderate risk of flooding remains in the lower reaches of the river.