

Somalia Flood Watch

Issued: 21st October, 2015



FLOOD WARNING LEVEL

KEY TO WARNING LEVELS

Severe Flooding Possible

Moderate Flooding (up to 5 year return period)

Minimal/No Flood Risk

	Last Week	Coming Week
Shabelle		
Juba		

The Deyr 2015 rainy season started well in many parts of Somalia and has been increasing in space and intensity over the last few days within the Juba and Shabelle river basins both in Somalia and in the Ethiopian highlands. Some of the stations within the basin that have recorded significant rains since the beginning of the month are highlighted in table 1 below. Map - 1 shows the total satellite Rainfall Estimates (RFE) for the same reporting period while Map -2 shows the rainfall forecast for coming week.

Station Name	Luuq	Bardheere	Bur Hakaba	Wanle Weyne	Belet Weyne	Mataban
Rainfall (mm)	92.0	74.0	124.0	47.0	148.0	265.0

Station Name	Bulo burti	Jowhar	Balcad
Rainfall (mm)	84.0	71.0	152.0

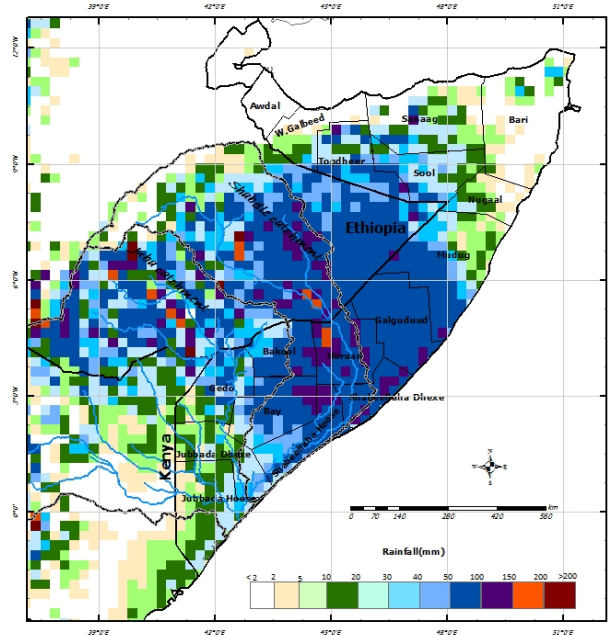
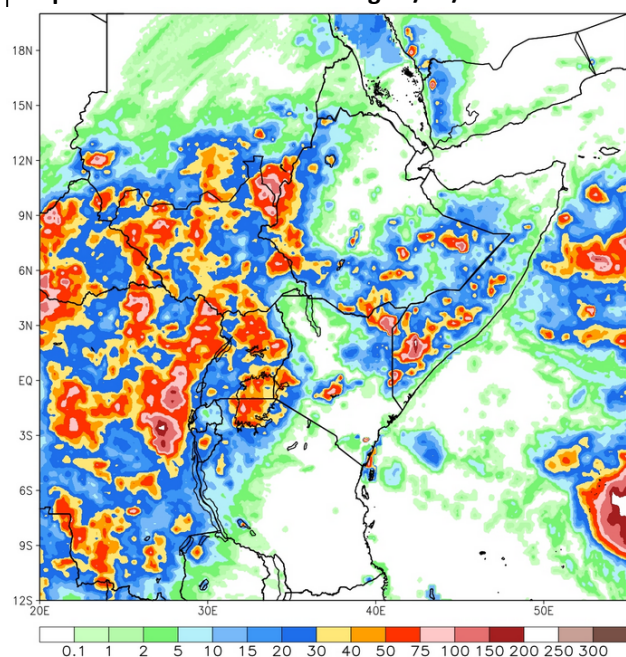
Satellite rainfall estimates (Map-1) also indicates significant rains were received in the two river basins during the last one week. The rainfall forecast for the coming week (Map - 2) indicates heavy rains within the Shabelle basin both in Somalia and Ethiopian highlands while moderate rains are expected in the Juba basin inside Somalia and heavy rains in the highlands. The coastal areas of Banadir, Middle Shabelle and Galgaduud regions will also experience heavy rains as per the forecast.

River levels in the upstream stations along the Juba and Shabelle (Luuq and Belet Weyne respectively) continued to increase over the last week. The levels in the middle and lower reaches of Shabelle River are currently high.

Given the rainfall forecast and the current river levels, there is moderate flood risk level along the middle and lower reaches of Shabelle while there is no foreseen risk of flooding along the Juba in the coming week.

Map -1: Total RFE: Week ending 20/10/2015

Map-2: 7-Day Rainfall Forecast: up to 27/10/2015



This bulletin is produced by the FAO Somalia Water and Land Information Management (SWALIM). For more information send an e-mail to SO-Hydro@fao.org or visit <http://www.faoswalim.org>

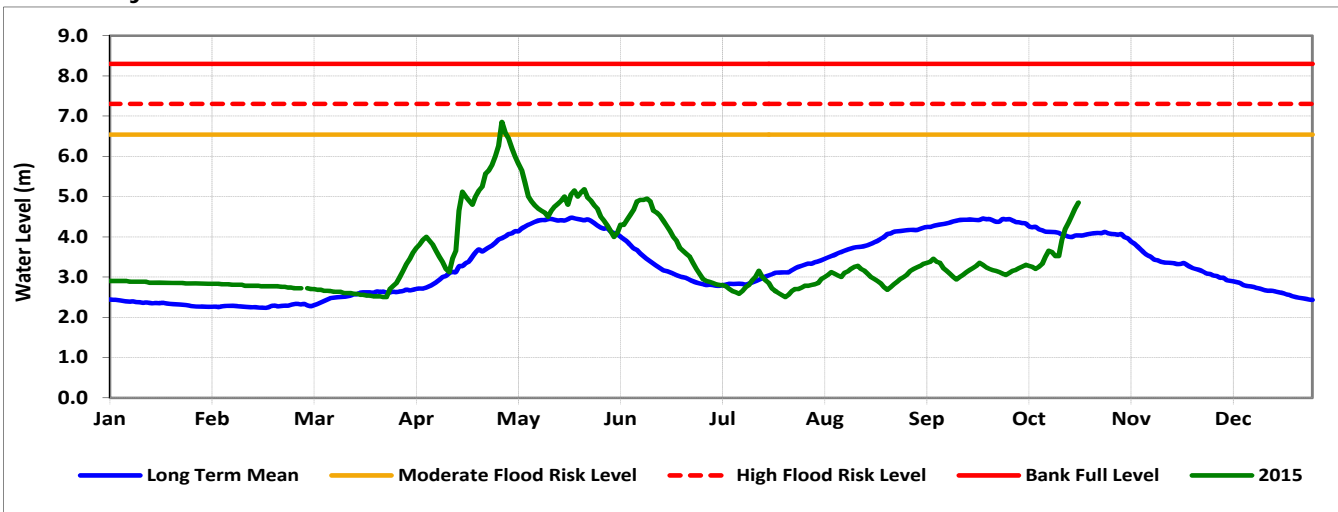
Technical Partners



SWALIM Funding Agencies



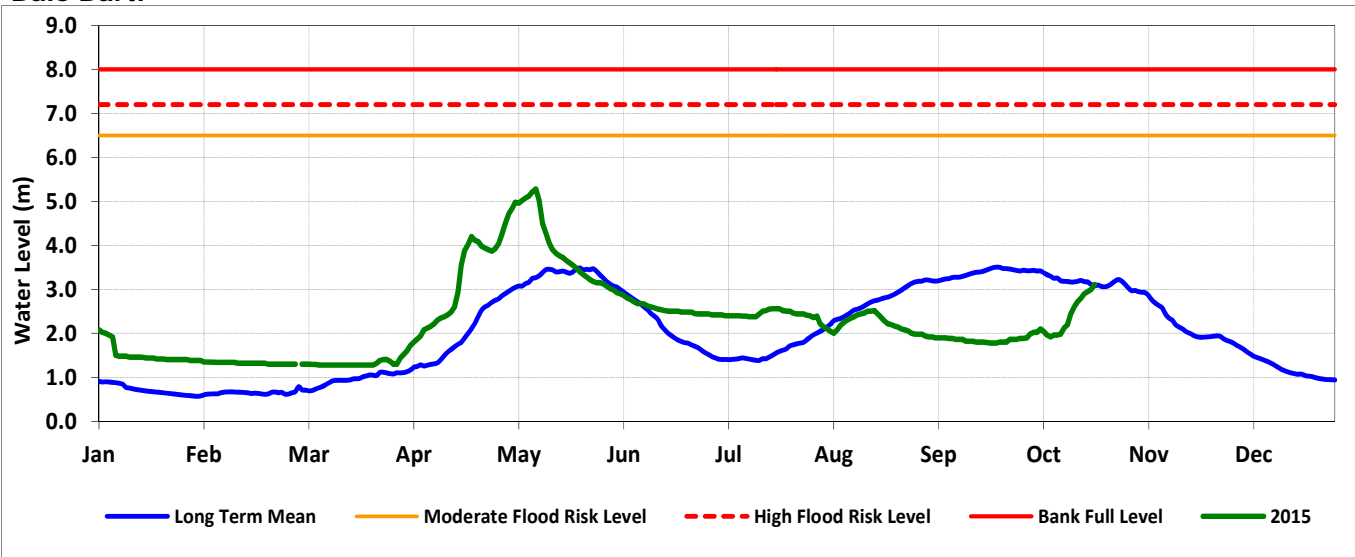
Belet Weyne



Date	Observed River Level (m)	Moderate Flood Risk Level (m)	High Flood Risk Level (m)
21/10/2015	4.85	6.50	7.30

Observed river levels at Belet Weyne increased sharply over the last few days . Today’s river level is 4.85m which is 2.45m below the high risk flood level.

Bulo Burti



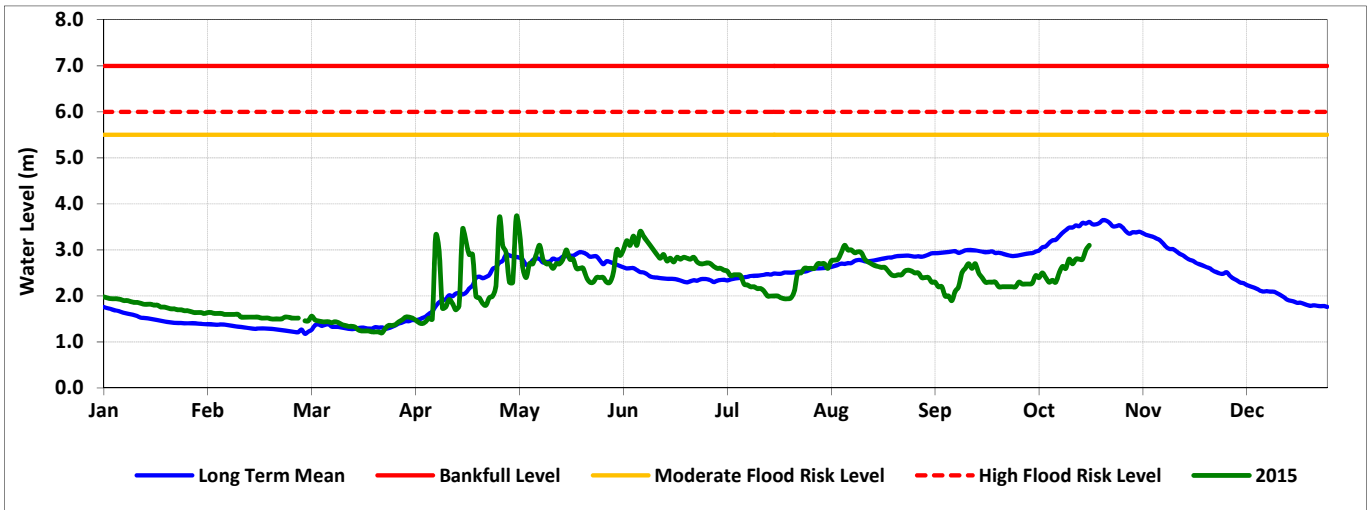
Date	Observed River Level (m)	Moderate Flood Risk Level (m)	High Flood Risk Level (m)
21/10/2015	3.11	6.50	7.20

Observed river levels at Bulo Burti increased over the last week. Today’s river level is 3.11m which is 4.09m below the high risk flood level.

Forecast for coming week for Shabelle

Moderate to heavy rains within the Shabelle basin inside Somalia and the Ethiopian highlands have led to sharp river level increase. Observed river levels in the middle parts of the river are high and given the rainfall forecast there is a likelihood of moderate level of flooding the middle and lower reaches towards the end of the week.

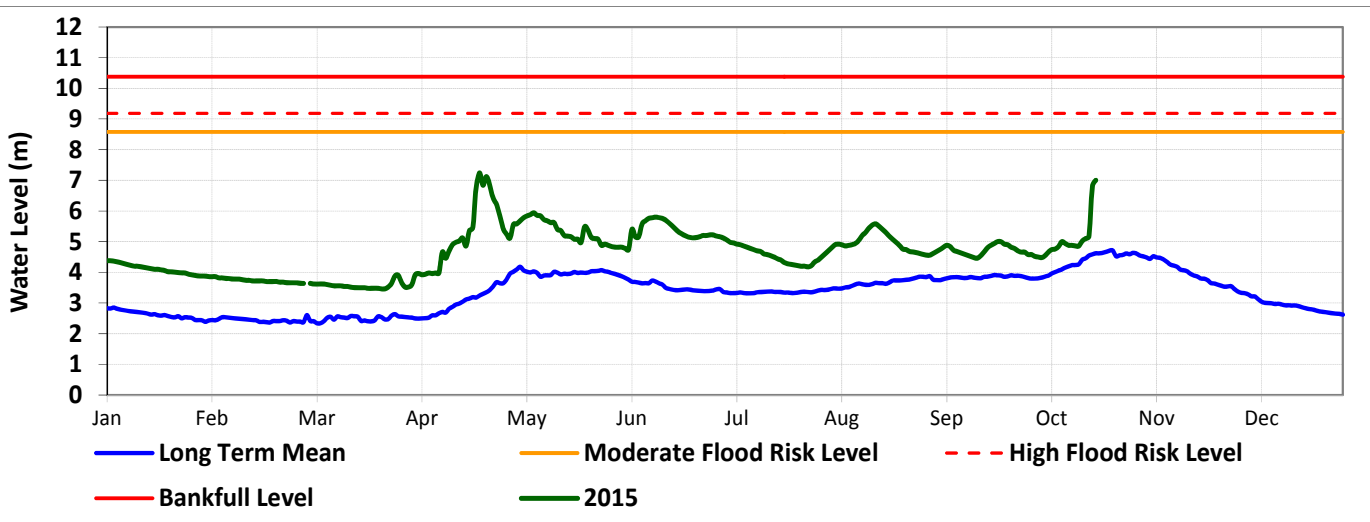
Luuq



Date	Observed River Level (m)	Moderate Flood Risk Level (m)	High Flood Risk Level (m)
21/10/2015	3.10	5.50	6.00

Observed river level at Luuq increased gradually over the last week. Today’s river level is 3.10m which is 2.90m below the high risk flood level.

Bardheere



Date	Observed River Level (m)	Moderate Flood Risk Level (m)	High Flood Risk Level (m)
21/10/2015	7.00	8.58	9.18

Observed river levels at Bardheere increased over the last week. Today’s river level is 7.00m which is 2.18m below the high risk flood level.

Forecast for coming week for Juba

River levels along the Juba River increased steadily over the last week. There is however no foreseen risk of flooding in the coming week.