

Somalia Flood Watch

Issued: 24th November, 2015



FLOOD WARNING LEVEL

KEY TO WARNING LEVELS

	Last Week	Coming Week
Shabelle		
Juba		

- Severe Flooding Possible**
- Moderate Flooding (up to 5 year return period)**
- Minimal/No Flood Risk**

During the week that ended on 23rd November 2015, there was a reduction of rainfall activities in most areas of Juba and Shabelle basins inside Somalia as well as the Ethiopian highlands compared to the previous week. However, a few stations recorded moderate rains as seen in the table below. Map - 1 shows the total satellite Rainfall Estimates (RFE) for the same reporting period while Map –2 shows the rainfall forecast for coming week.

Station Name	Luuq	Bardheere	Bur Hakaba	Wanle Weyne	Belet Weyne	Mataban
Rainfall (mm)	0.0	0.0	0.0	15.0	0.0	35.0
Station Name	Bulo burti	Jowhar	Balcad	Mogadishu	Wanle Weyne	Bualle
Rainfall (mm)	33.0	21.0	56.0	33.0	15.0	32.0

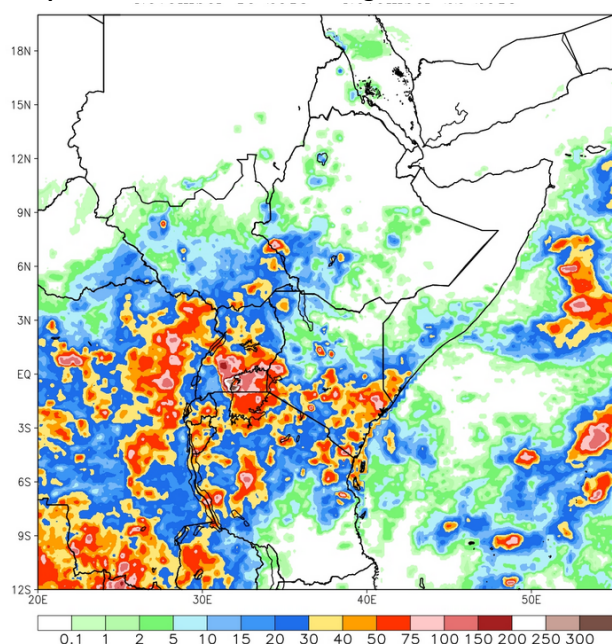
Satellite rainfall estimates (Map-1) also indicates reduction of rainfall amounts during the same period within the Juba and Shabelle basins. The rainfall forecast for the coming week (Map – 2) indicates an increase of rainfall activities with moderate to heavy rains foreseen in both basins inside Somalia and within the Ethiopian highlands towards the end of the week.

River levels are currently within normal in most sections of the two river with the exception of Jowhar areas.

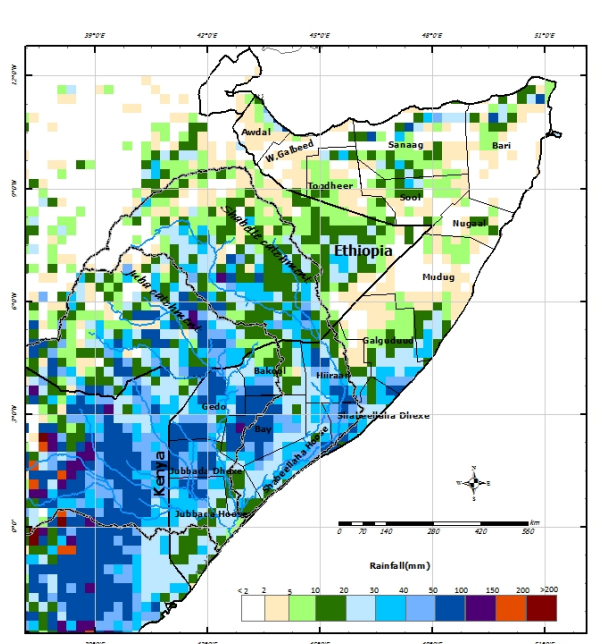
Given the rainfall forecast, the current river levels, existing open river banks and weak river embankments, there remains a **high** risk level of flooding along the middle and lower reaches of Shabelle.

The flood risk level for Juba remains **moderate** level. Flash floods within the Juba basin may also be expected especially the areas bordering Kenya where heavy rains are foreseen during the coming week.

Map –1: Total RFE: Week ending 23/11/2015



Map-2: 7-Day Rainfall Forecast: up to 01/12/2015



This bulletin is produced by the FAO Somalia Water and Land Information Management (SWALIM). For more information send an e-mail to SO-Hydro@fao.org or visit <http://www.faoswalim.org>

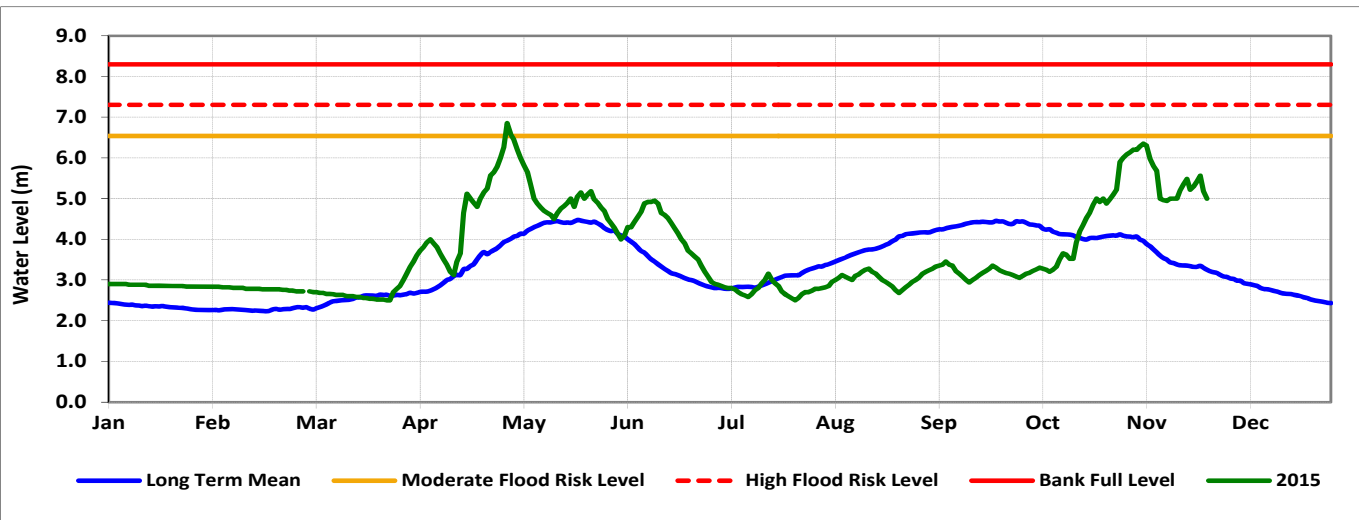
Technical Partners



SWALIM Funding Agencies



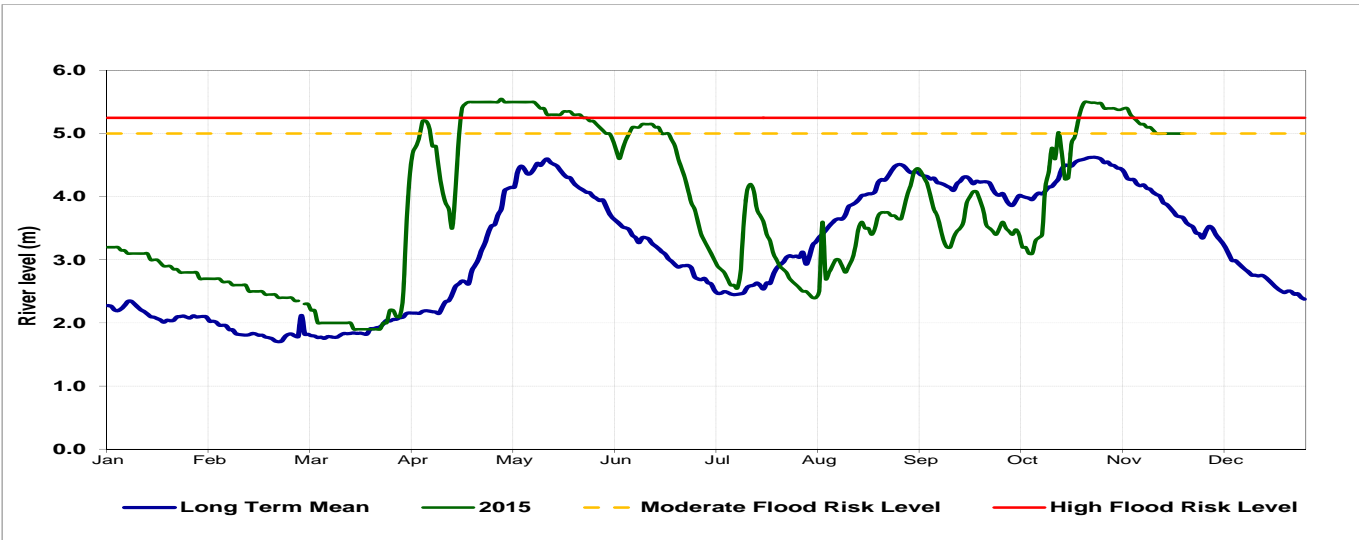
Belet Weyne



Date	Observed River Level (m)	Moderate Flood Risk Level (m)	High Flood Risk Level (m)
24/11/2015	5.35	6.50	7.30

Observed river levels at Belet Weyne fluctuated over the last week . Today’s river level is 5.00m which is 2.30m below the high risk flood level.

Jowhar



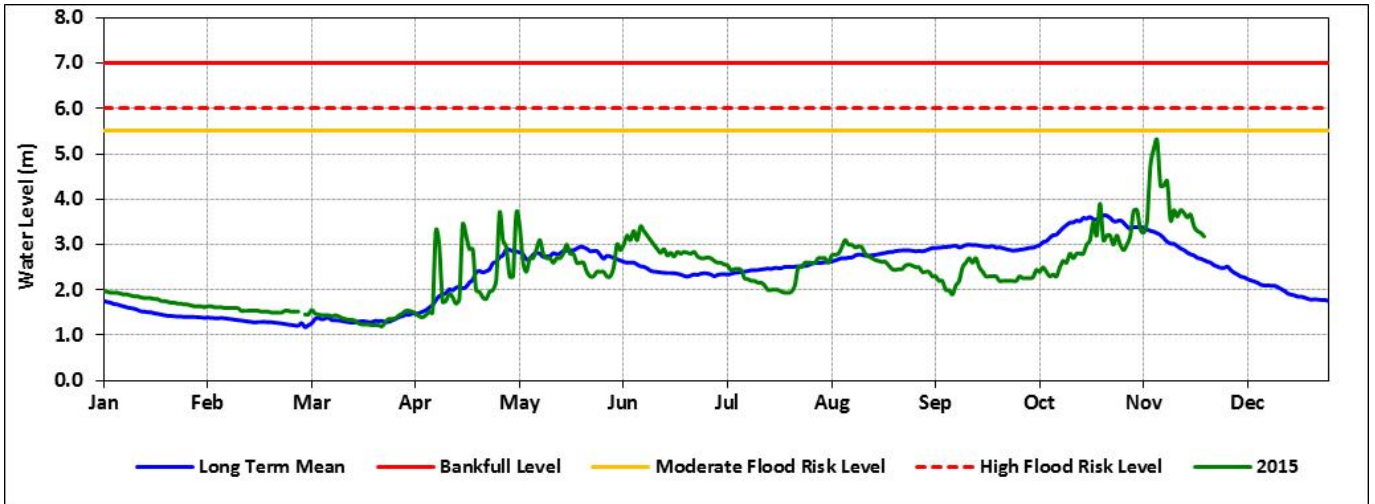
Date	Observed River Level (m)	Moderate Flood Risk Level (m)	High Flood Risk Level (m)
24/11/2015	5.00	5.00	5.25

Observed river levels at Jowhar remained high through out the week.. Today’s river level is 5.00m which is a few centimetres from the high risk flood level.

Forecast for coming week for Shabelle

There remains a high risk of flooding in the middle and lower reaches of Shabelle River during the coming week.

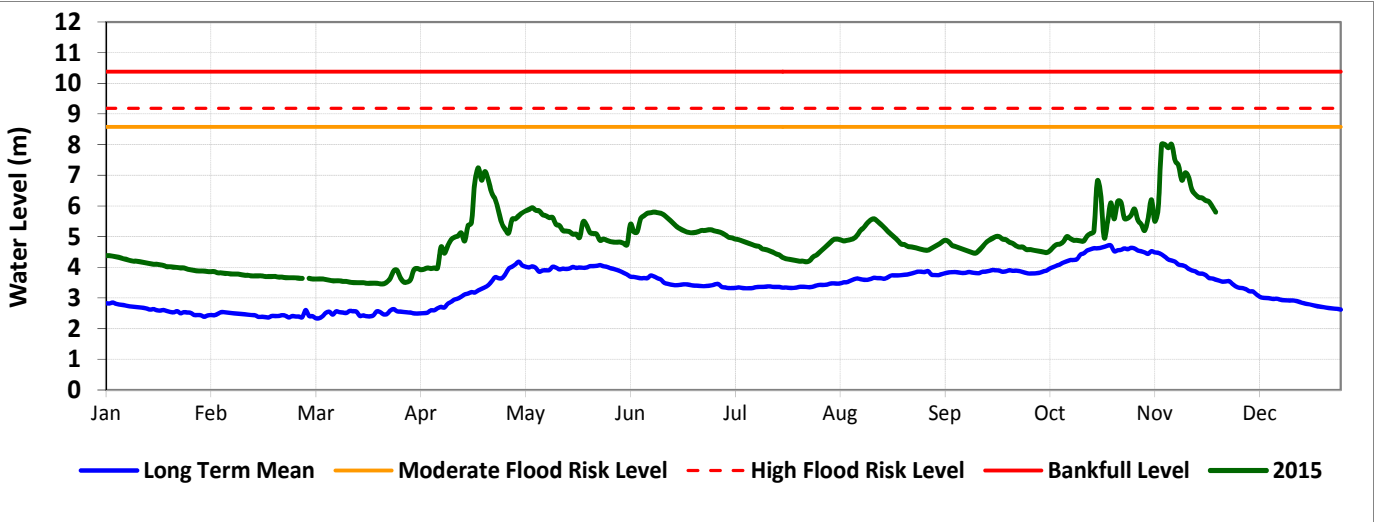
Luuq



Date	Observed River Level (m)	Moderate Flood Risk Level (m)	High Flood Risk Level (m)
24/11/2015	3.18	5.50	6.00

Observed river level at Luuq continued to decrease over the last week. Today’s river level is 3.18m which is 2.82m below the high risk flood level.

Bardheere



Date	Observed River Level (m)	Moderate Flood Risk Level (m)	High Flood Risk Level (m)
24/11/2015	6.52	8.58	9.18

Observed river levels at Bardheere decreased further during the last week. Today’s river level is 5.80m which is 3.38m below the high risk flood level.

Forecast for coming week for Juba

There is a moderate risk of flooding foreseen in the coming week in the middle and lower reaches of Juba river especially in locations where there are existing open river breakages.