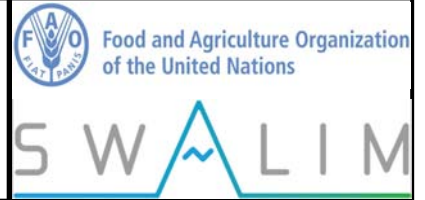




Somalia Flood Watch

Issued: 25 April 2018



FLOOD WARNING LEVEL

	Last Week	Coming Week
Shabelle		
Juba		

KEY TO WARNING LEVELS

Severe Flooding Possible

Moderate Flooding (up to 5 year return period)

Minimal/No Flood Risk

During the week ending on 24 April 2018, the Juba and Shabelle basins in Somalia and in the Ethiopian highlands continued to receive moderate to heavy rains. The table below shows the total rainfall amounts recorded in selected stations within the two basins over the last one week.

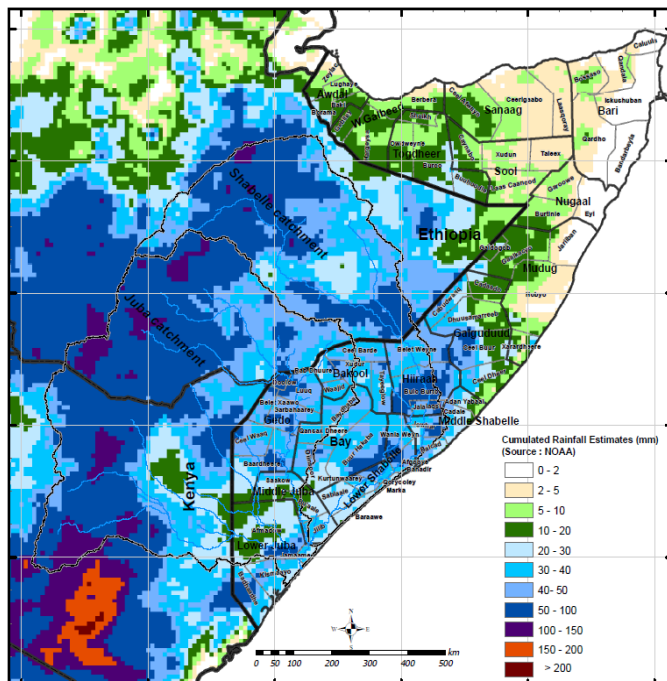
Station Name	Luuq	Bardheere	Dollow	Belet Weyne	Bualle	Bulo Burti	BurHakaba
Rainfall (mm)	106.0	56.0	85.0	103.0	124.0	125.5	52.0

The high rainfall amounts received over the last week were spread across many parts of the country, as indicated in the total Satellite Rainfall Estimates (RFE) in Map1, with the exception of Puntland where light rains were experienced. Following the moderate to heavy rains flash floods and riverine flooding have been reported in many places within the Juba and Shabelle river basins.

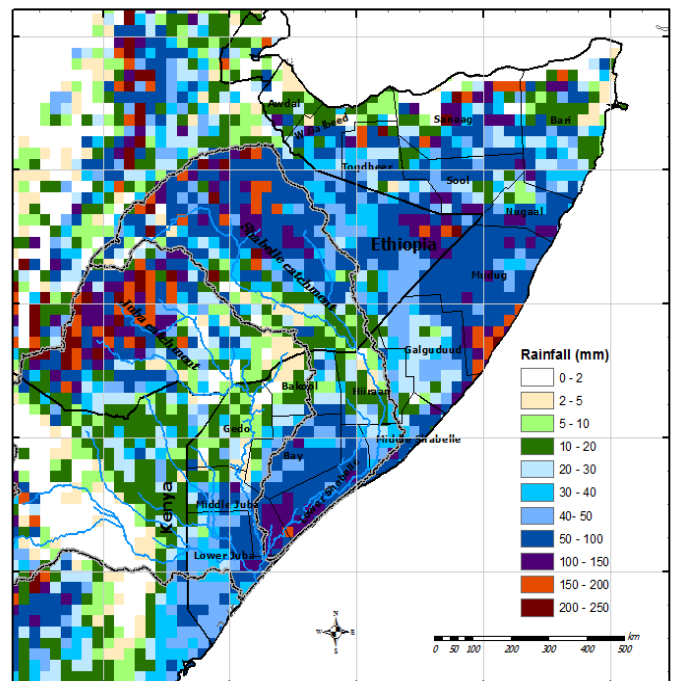
The prediction for the coming week (Map 2, valid until 01 May 2018) is a forecast of heavy rains in the Juba and Shabelle basins, both inside Somalia and within the Ethiopian highlands. Other central and northern parts of the country will also receive moderate to high rains in the coming week, according to the forecast.

Given the forecast and the current high river levels riverine flooding is likely to continue in the coming week. Flash floods are also likely to occur in low lying build up areas especially in Mudug, Bay and Bakool regions during the forecast period.

Map –1: Total RFE: Week ending 24 April 2018



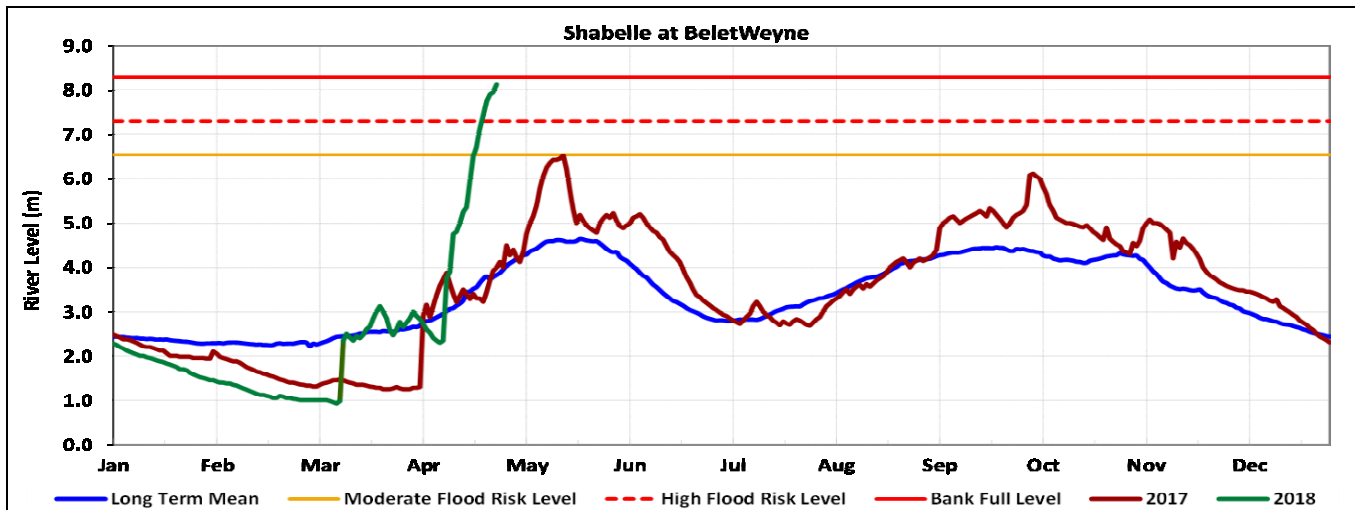
Map-2: 7-Day Rainfall Forecast: up to 01 May 2018



This update is produced by the: FAO - Somalia Water and Land Information Management—SWALIM Project. For more information regarding this product please contact SO-hydro@fao.org or visit <http://www.faoswalim.org>

Primary data sources are; Ministry of Agriculture & Irrigation and Ministry of Energy & Water Resources of the Federal Government of Somalia, SWALIM and NOAA/USGS. Tables, Maps and graphs on this bulletin are produced from three sources.

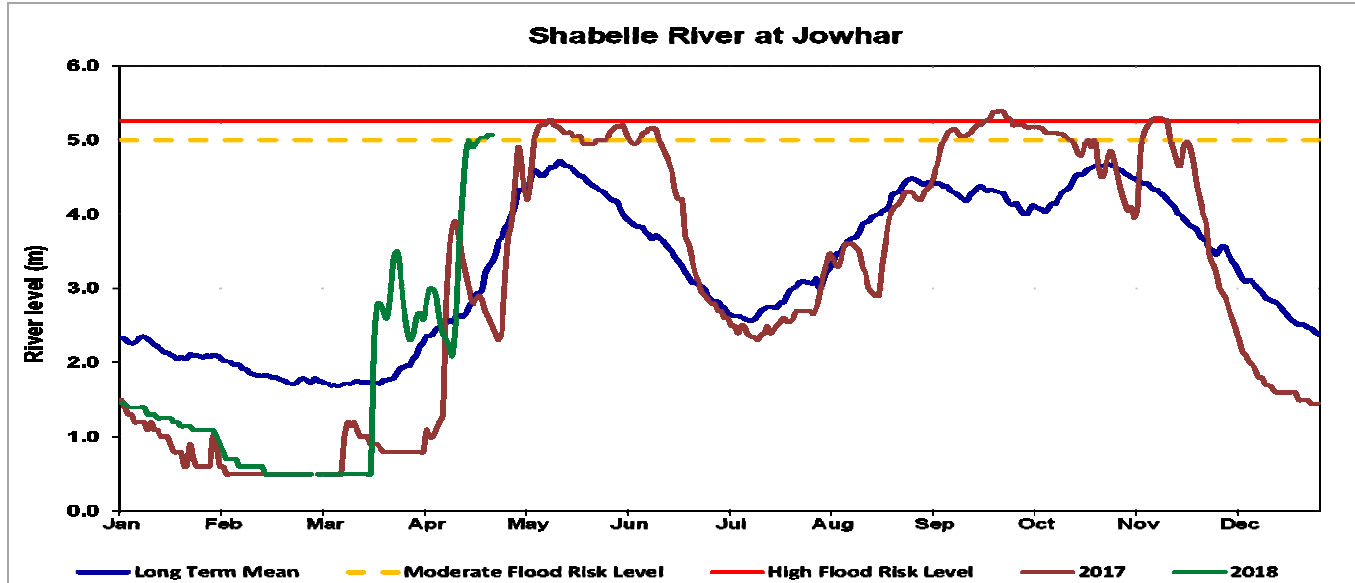
Belet Weyne



Date	Observed River Level (m)	Moderate Flood Risk Level (m)	High Flood Risk Level (m)
25 April 2018	8.12	6.50	7.30

Observed river levels at Belet Weyne are currently above the high flood risk level and 0.18m away from bank full level.

Jowhar



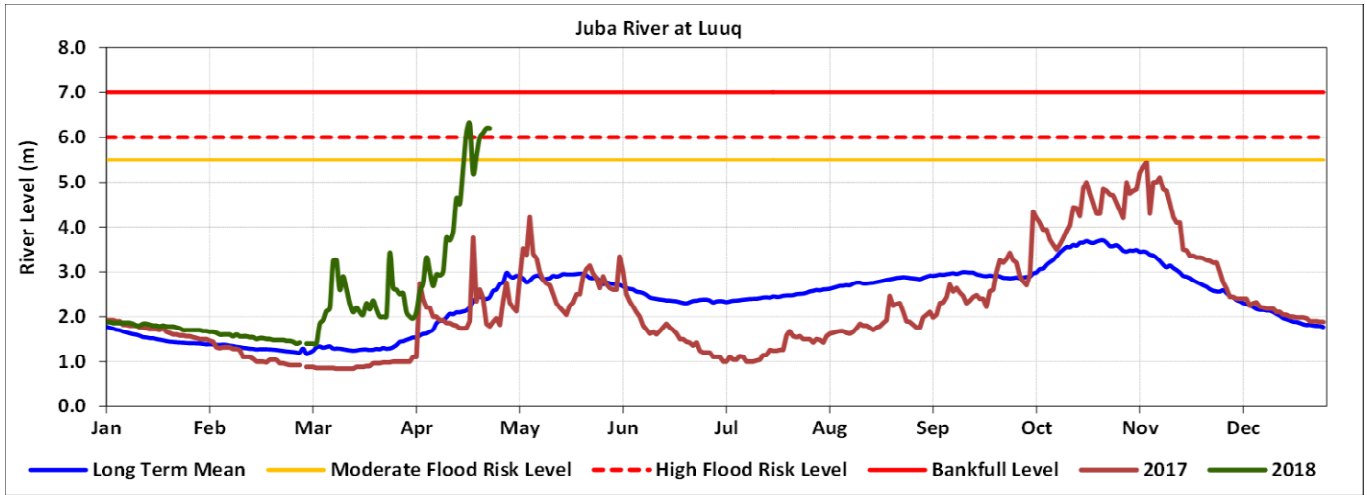
Date	Observed River Level (m)	Moderate Flood Risk Level (m)	High Flood Risk Level (m)
25 April 2018	5.00	5.00	5.25

Observed river levels at Jowhar, which is in the middle parts of the river, remained high over the last week and is expected to continue rising posing a high risk of flooding in the area.

Forecast for coming week for Shabelle

Given the rainfall forecast and the high river levels, flooding along the Shabelle in the coming week especially in the middle and lower reaches will continue.

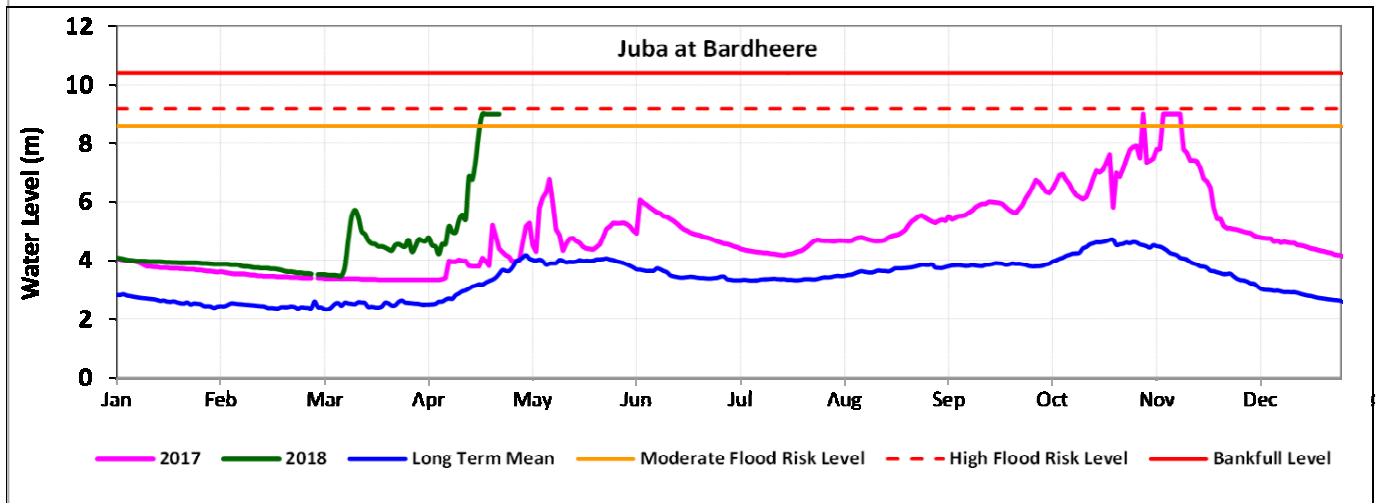
Luuq



Date	Observed River Level (m)	Moderate Flood Risk Level (m)	High Flood Risk Level (m)
25 April 2018	6.20	5.50	6.00

Observed river level at Luuq sharply increased over the last week. Currently the river level is beyond the high flood risk level.

Bardheere



Date	Observed River Level (m)	Moderate Flood Risk Level (m)	High Flood Risk Level (m)
25 April 2018	9.00	7.40	8.20

Observed river levels at Bardheere continued to rise over the last week, with the current level surpassing the high flood risk level.

Forecast for coming week for Juba

Given the rainfall forecast and the high river levels, flooding along the riverine areas will continue during the forecast period.

SWALIM Technical Partners



SWALIM is Currently Funded by:

