

Somalia Flood Watch

Issued: 27th October, 2015



FLOOD WARNING LEVEL

KEY TO WARNING LEVELS

	Last Week	Coming Week
Shabelle		
Juba		

Severe Flooding Possible

Moderate Flooding (up to 5 year return period)

Minimal/No Flood Risk

During the week that ended on 26th October 2015, heavy rains were observed in the Shabelle basin inside Somalia as well as the Ethiopian highlands. The heavy rains led to increased river flow and levels causing floods in some sections of the river. Flash floods were also reported in Jowhar, Mogadishu, Mataban and Mahadey Weyne areas. The Juba basin inside Somalia recorded light rains as seen in the table below. Map - 1 shows the total satellite Rainfall Estimates (RFE) for the same reporting period while Map -2 shows the rainfall forecast for coming week.

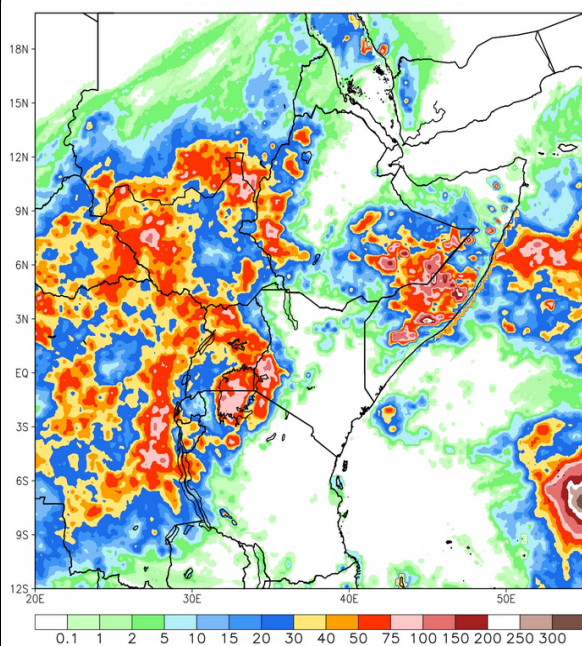
Station Name	Luuq	Bardheere	Bur Hakaba	Wanle Weyne	Belet Weyne	Mataban
Rainfall (mm)	12.5	0.0	80.0	38.0	174.0	145.0
Station Name	Bulo burti	Jowhar	Balcad	Mogadishu		
Rainfall (mm)	134.0	80.0	41.5	30.0		

Satellite rainfall estimates (Map-1) also indicates significant rains were received within the Shabelle basin during the last one week. The rainfall forecast for the coming week (Map - 2) indicates heavy rains within the two basins both inside Somalia and Ethiopian highlands. Heavy rains are also expected in Banadir, Galgaduud, Mudug and parts of Nugaal, sool, Sanaag and Togdheer regions with a possibility of flash floods in these areas.

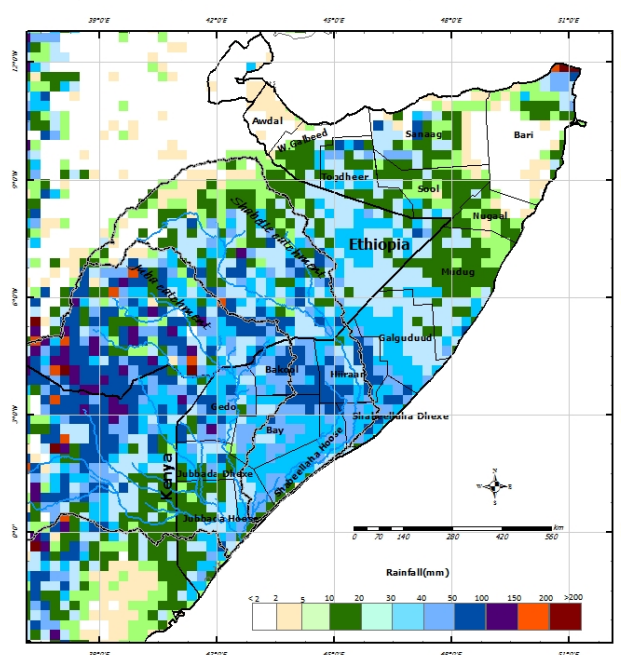
River levels in the middle and lower reaches of Shabelle River are currently at full crest in some sections of the river.

Given the rainfall forecast and the current river levels, there is a **high** risk level of flooding along the middle and lower reaches of Shabelle. A **Moderate** risk of flooding is foreseen in the lower reaches of Juba River especially in locations where there exists open river breakages. Status of Juba River breakages can be found here: http://www.faoswalim.org/resources/site_files/Status_of_River_Breakages_Juba_August_2015-Map_0.pdf

Map -1: Total RFE: Week ending 26/10/2015



Map-2: 7-Day Rainfall Forecast: up to 02/11/2015



This bulletin is produced by the FAO Somalia Water and Land Information Management (SWALIM). For more information send an e-mail to SO-Hydro@fao.org or visit <http://www.faoswalim.org>

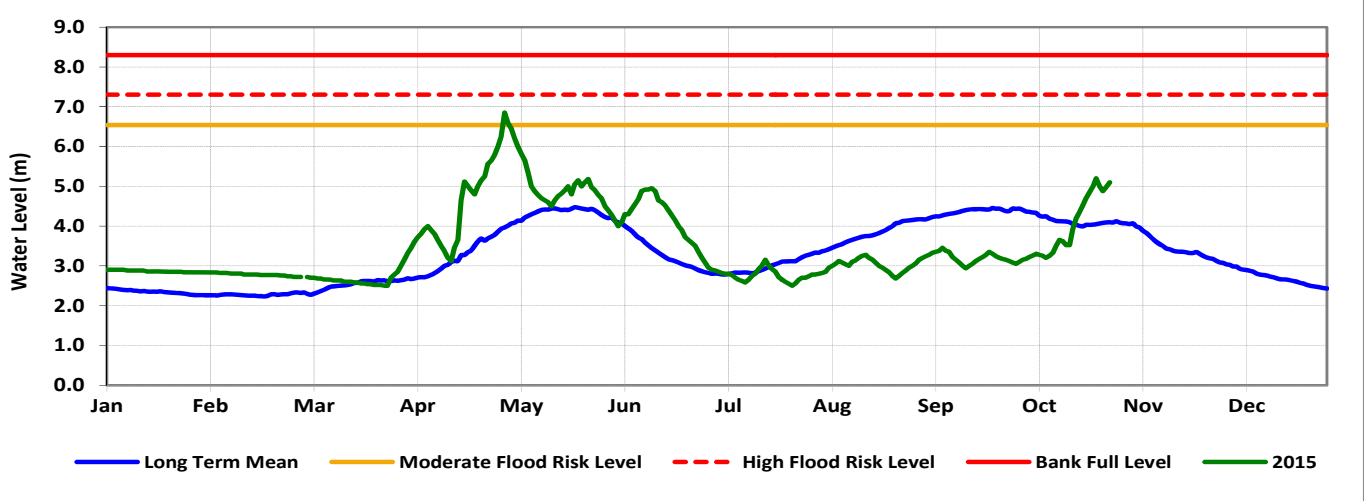
Technical Partners



SWALIM Funding Agencies



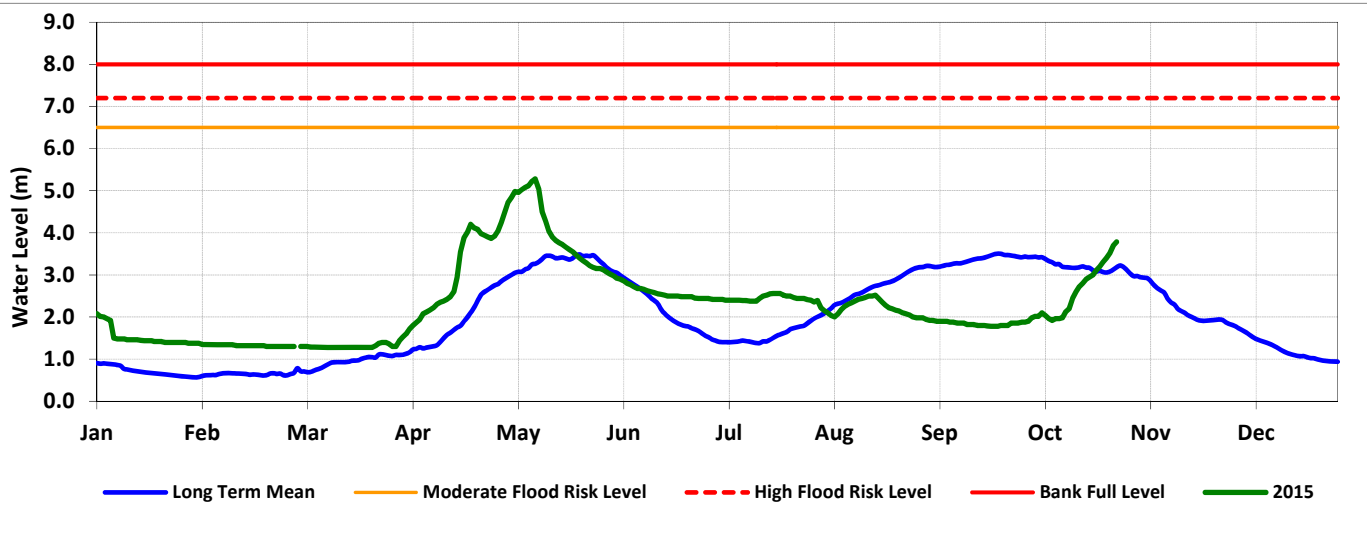
Belet Weyne



Date	Observed River Level (m)	Moderate Flood Risk Level (m)	High Flood Risk Level (m)
27/10/2015	5.10	6.50	7.30

Observed river levels at Belet Weyne increased last week . Today’s river level is 5.10m which is 2.20m below the high risk flood level.

Bulo Burti



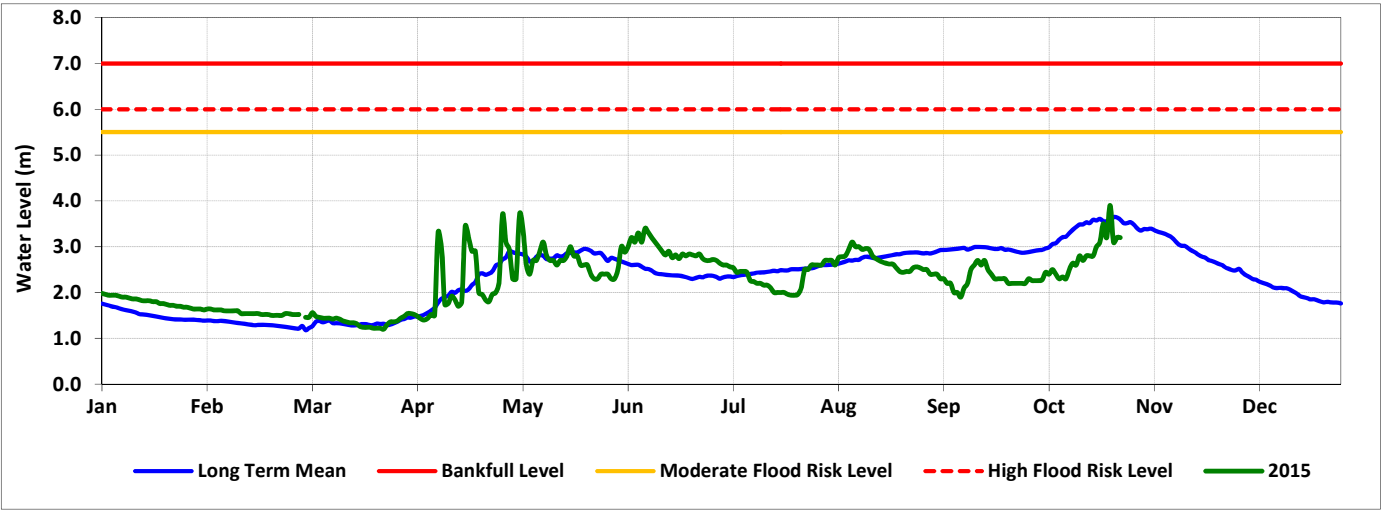
Date	Observed River Level (m)	Moderate Flood Risk Level (m)	High Flood Risk Level (m)
27/10/2015	3.78	6.50	7.20

Observed river levels at Bulo Burti increased over the last week. Today’s river level is 3.78m which is 3.42m below the high risk flood level.

Forecast for coming week for Shabelle

Heavy rains within the Shabelle basin inside Somalia and the Ethiopian highlands continued last week. Observed river levels in the middle parts of the river are high and given the rainfall forecast there is a high risk of flooding in the middle and lower reaches towards the end of the week.

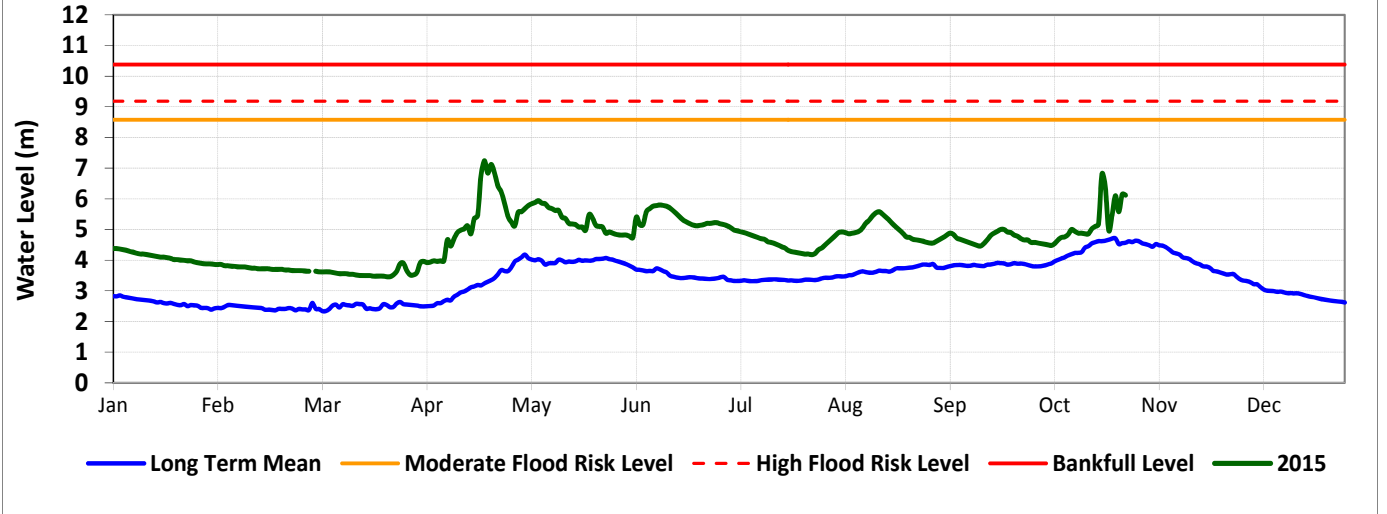
Luuq



Date	Observed River Level (m)	Moderate Flood Risk Level (m)	High Flood Risk Level (m)
27/10/2015	3.20	5.50	6.00

Observed river level at Luuq decreased over the last week. Today's river level is 3.20m which is 2.80m below the high risk flood level.

Bardheere



Date	Observed River Level (m)	Moderate Flood Risk Level (m)	High Flood Risk Level (m)
27/10/2015	6.12	8.58	9.18

Observed river levels at Bardheere fluctuated over the last week. Today's river level is 6.12m which is 3.06m below the high risk flood level.

Forecast for coming week for Juba

There is a moderate risk of flooding foreseen in the coming week in the lower reaches of Juba river especially in locations where we have existing open river breakages.