



# SHABELLE RIVER FLOOD UPDATE

Issued: 22nd May, 2023

## Flood Water is Receding from Belet Weyne Town and Surrounding Areas with High Risk of Flooding at Bulu Burte

For close to two weeks, Belet Weyne town and its surrounding areas have witnessed widespread and devastating floods (Map 1) occasioned by the Shabelle River bursting its banks on the 9th May 2023. The river has remained at a bankful height of 8.30 meters up to the current date of May 22nd. The widespread flooding has resulted to property damage, and population displacement.

Over the last two days, the flood water has begun slowly receding from Belet Weyne town and the surrounding areas back into the river, and progressively flow downstream. Subsequently, the river level at Bulu Burte has steadily risen, with today's (22nd May) level just 13 cm below the high flood risk level (Figure 1).

The river level at Jowhar has stagnated below moderate flood risk level (5.0 m) since the beginning of the Gu rain season. Today's level is 3.75 m and is exactly equal to its normal mark in this season (Figure 2). Although the loss of flood water through overbank spillage between Belet Weyne and Bulu Burte explains the delay in Jowhar river level rise, it is expected that the high river levels at Bulu Burte will be transmitted to Jowhar and eventually to Balcad within the coming week.

No rains have been reported in the last week over South Central Somalia including the entire stretch of Shabelle River from Belet Weyne to Balcad. Although light rains to dry conditions are predicted over the coming week, the steady rise in river levels at Bulu Burte poses a HIGH-RISK OF FLOODING in the town and the adjacent areas. A MODERATE RISK OF FLOODING is foreseen in Jowhar and the adjacent areas over the same period. Given the expected loss of water to overbank spillage and breakages along the Shabelle river channel, the risk of flooding reduces as the waters flow downstream to Balcad.

Therefore, as the flood water recedes back to the river, residents of Belet Weyne are urged to beware of crocodiles that could have escaped the river on to the floodplains. They should also beware of the risks of

drowning. As the residents prepare to relocate back to the previously flooded areas, housing structures need to be assessed for safety. In order to prevent water borne diseases, proper hygiene including disinfection measures such as chlorination of water sources should be adopted.

The residents of Bulu Burte should prepare for potential evacuation by identifying safe routes to high grounds and gathering essential items, inform family, friends, and neighbors about the flood warning, secure property and consider assembling an emergency kit with necessary supplies. Residents are also strongly recommended to stay informed through regular bulletin updates at specified times, monitor thorough radio, television and internet for flood warnings. Any open or weak river embankments within Jowhar should be closed and reinforced.

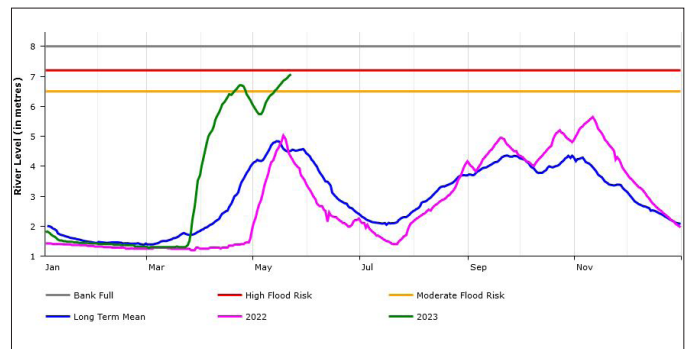


Figure 1: Shabelle river level at Bulu Burte gauging station as at 22nd May 2023

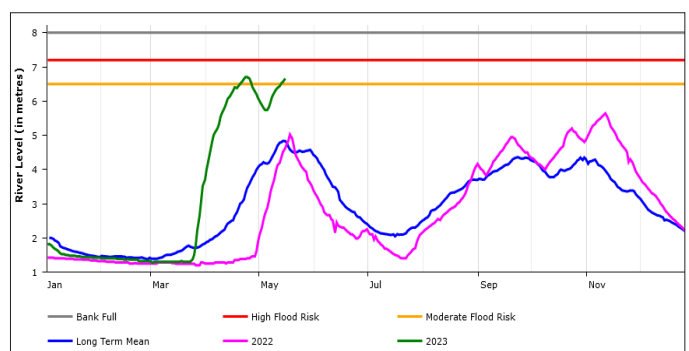


Figure 2: Shabelle river level at Jowhar gauging station as at 22nd May 2023

SWALIM is a multi-donor project managed by FAO and currently funded by The European Union, SDC, Government of France and USAID



Funded by the European Union

Schweizerische Eidgenossenschaft  
Confédération suisse  
Confederazione Svizzera  
Confederaziun svizra  
Swiss Agency for Development and Cooperation SDC

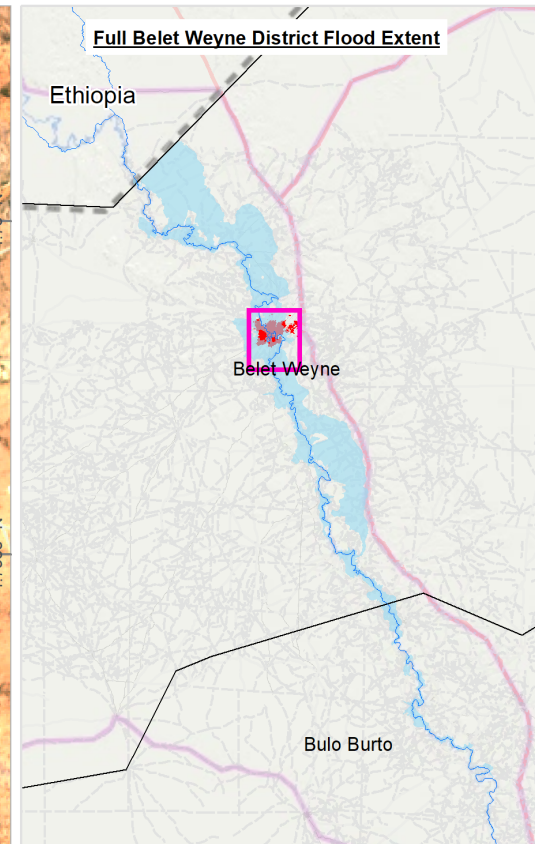
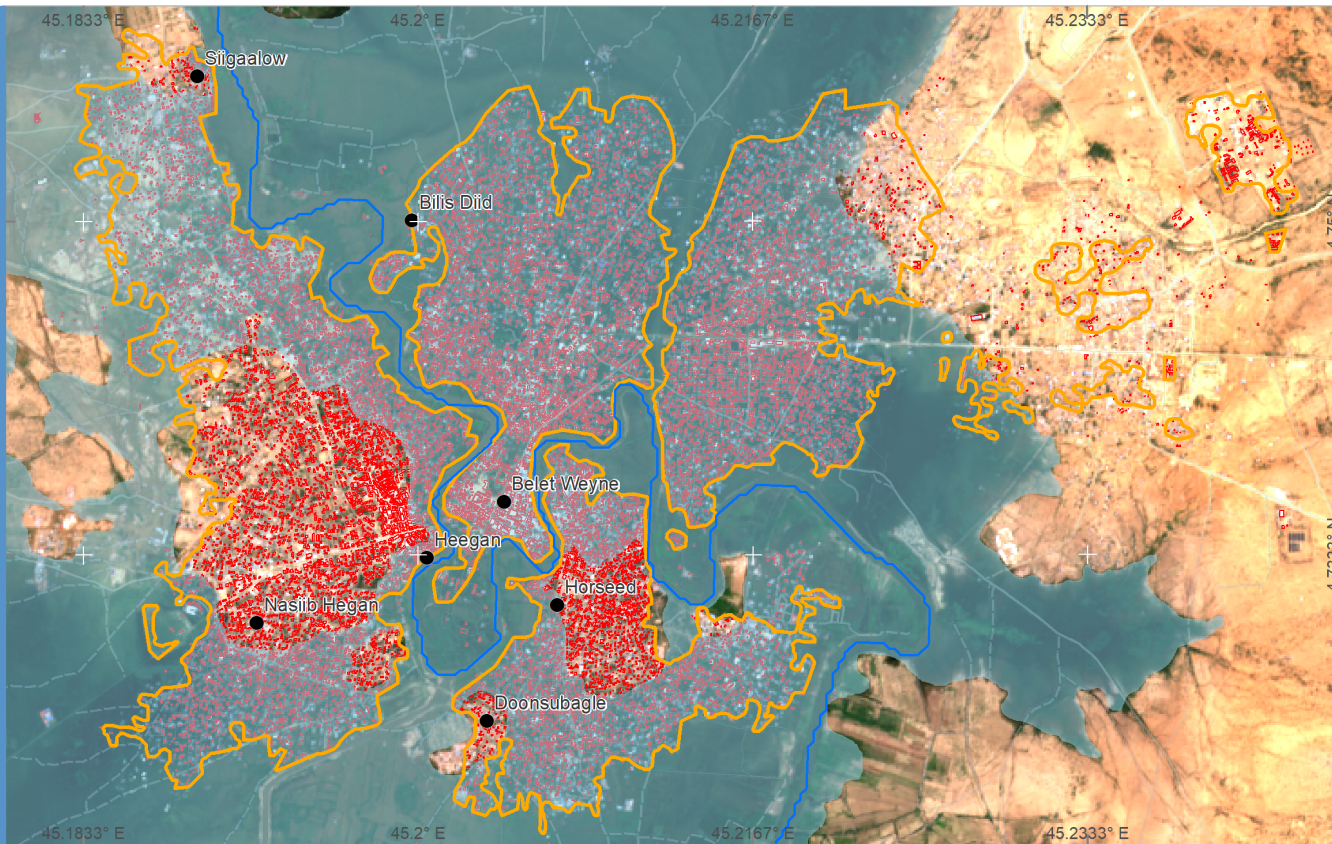
RÉPUBLIQUE FRANÇAISE  
Liberté  
Égalité  
Fraternité



USAID FROM THE AMERICAN PEOPLE

# SOMALIA, BELET WEYNE FLOODING AS AT 19TH MAY 2023

Food and Agriculture  
Organization of the  
United Nations



## BELETWEYNE & BULO BURTO FLOODING STATISTICS

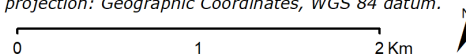
Date of Flooding Analysis	Number of Building		Beletweyn Town (Ha)		Total Belet weyne District Flooding(Ha)	Total Bulo Burto District Flooding(Ha)
	Flooded Buildings	Total Buildings	Flooded Area	Total Area		
09-May	7,111	18,599	406	1,122	24,266	-
	38%		36%			
14-May	15,199		890			
	82%	79%				
19-May	13,696	829	829	74%	45,308	3,888
	74%	74%				

## Legend

- Settlements
- Shabelle River
- ▭ Belet Weyne Town Boundary
- ▭ Floods
- ▭ Belet Weyne Buildings



Map Ref: Som\_Beletweyne\_Town\_Flood\_innutation\_19052023A3v1Is  
 Map Produced by: The Somalia Water and Land Information Management Project (SWALIM).  
 SWALIM is a Multi-donor Project Implemented by the United Nations' Food & Agriculture Organization.  
 For copies of digital data please contact: swalim@fao.org  
 Map projection: Geographic Coordinates, WGS 84 datum.



Data Source: Sentinel 2 Satellite Image  
 Date Created: 22/05/2023  
 Contact: swalim@fao.org  
 Website: www.faoswalim.org

The boundaries and names and the designations used on this map do not imply official endorsement or acceptance by the United Nations.

Map 1: Beletweyne town flood innutation as at 19th May 2023, Data source FAO, Sentinel 2