



AFRICA - Somalia



SOMALIA - River Shabelle



Legend

- Open Breakages (45)
- ▲ Overflows (0)
- ▲ Potential Overflows (13)
- Potential Breakages (199)
- Closed Breakages With Sand Bags (24)
- ★ National Capital
- Major Town
- Settlement
- Major Road
- Minor Road
- Regional Boundary
- District Boundary
- Rivers

Map Information

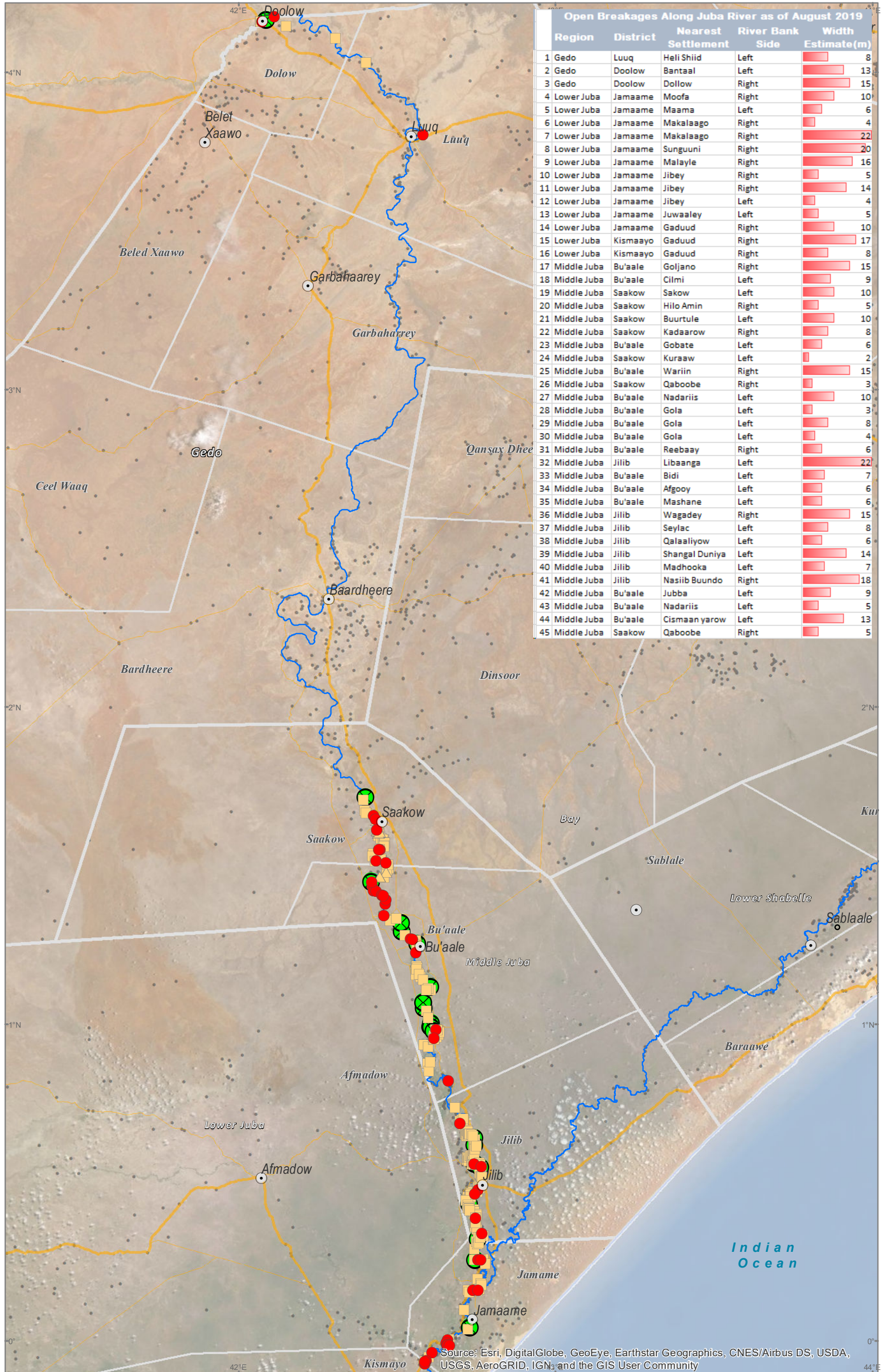
Map Reference:
WAT-BREAKAGES-JUBA-AUG.
2019-20190822-A3-001

Produced by:
The Somalia Water and Land Information Management Project (SWALIM).

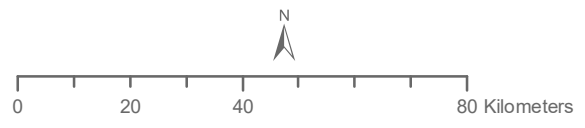
SWALIM is a multi-donor project implemented by the United Nation's Food & Agriculture Organization

For copies of digital data please contact: swalim@fao.org

Satellite data: WV2/MV3
Imagery dates: Oct 2017 - Aug 2019
Imagery resolution: 0.3 - 0.5 Meter
Imagery source: Digital Globe
Other dataset: FAO-SWALIM, UNDP
Analysis: FAO-SWALIM
Map projection: Geographic
Datum: WGS 84



Somalia Water and Land Information Management



The boundaries and names on this map do not imply official endorsement or acceptance by the United Nations.

Funding Agencies

USAID FROM THE AMERICAN PEOPLE

SHF Somalia Humanitarian Fund

THE WORLD BANK

UKaid from the British people

Schweizerische Eidgenossenschaft
Confédération suisse
Confederazione Svizzera
Confederaziun svizra

AGENZIA ITALIANA PER LA COOPERAZIONE ALLO SVILUPPO