



Food and Agriculture
Organization of the
United Nations



Somalia Water and Land Information Management



Rainfall Update in Somalia



Common
Humanitarian
Fund

29 April 2016



USAID
FROM THE AMERICAN PEOPLE

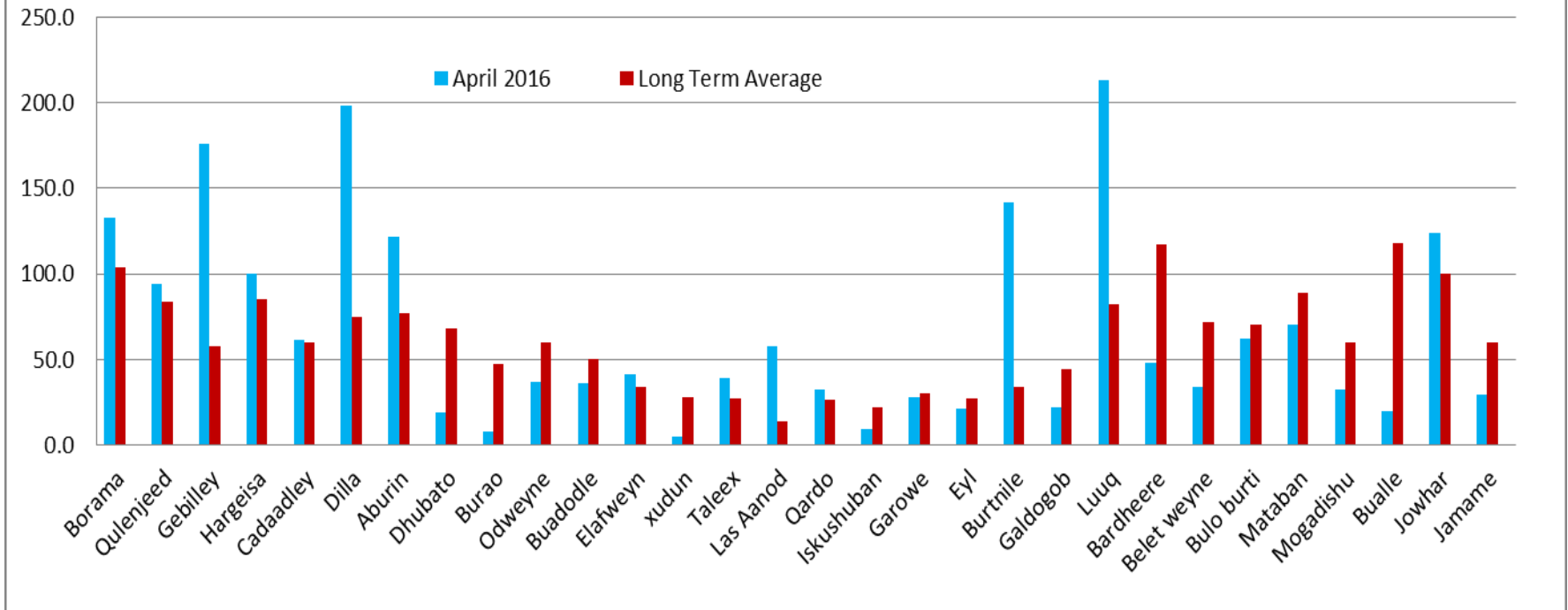
Rainfall Update

- Significant rains have been received in many areas of Somaliland especially in the western regions in the month of April
- Light to moderate rains were recorded in Puntland in the last few days bringing an immediate relief to the dry and hot weather; however drought conditions are still apparent in the area
- The rains are expected to improve the drought conditions in both Puntland and Somaliland
- The central parts of Somalia including Mudug and Galgadud regions have received little rains and remain water depressed
- The southern regions have started recording moderate to heavy rains and this expected to continue in the coming week

Rainfall Update (1 - 29 April 2016)

Area	Station	Rainfall amount 01 to 28 April	Area	Station	Rainfall amount 01 to 28 April
Somaliland	Borama	133	Puntland	Taleex	38.7
	Dilla	198		Las Aanod	57.5
	Gabiley	175.5		Qardo	32
	Hargeisa	99.5		Iskushuban	9
	Aburin	122		Baran	44
	Qulenjeed	93.5		Burtnile	143.6
	Berbera	0.5		Buuhoodle	45.1
	Burao	7.5		Bandarbeyla	4.5
	Odweyne	36.5		Garowe	28.2
	Erigavo	48.5		Eyl	21
	Xudun	5	South and Central	Bardaale	24
	Elafweyne	55		Luuq	213.5
	Lughaya	19.5		Dollow	132
	Zeyla	20		Bardheere	47.9
	Cadaadley	80.5		Belet weyne	33.5
	Dhubato	19		Galdogob	34.5
	Sheikh	8		Mataban	70
	Baligacas	56		Baidoa	19
	Botor	148		Bulo burti	62
				Bualle	20
		Jowhar	78		
		Jamame	29		
		Mogadishu	32		

April 2016 Rainfall compared to the Long Term Average

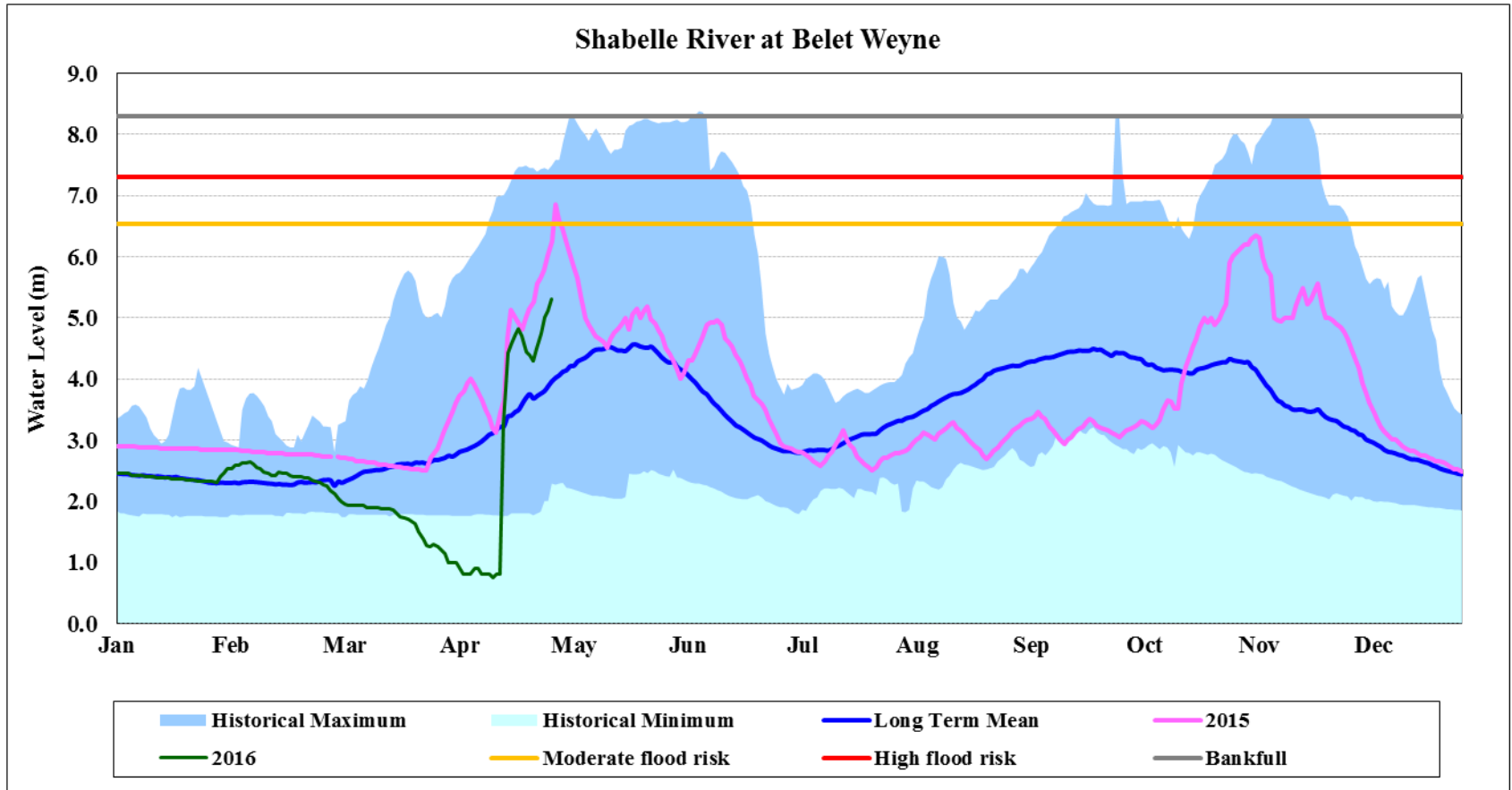


- The western sides of Somaliland recorded above average rains.
- There still reminds a deficit of rainfall amounts in most parts of Puntland
- Only a few stations in Gedo region recorded above normal rains in the month of April while the rest parts of Southern Somalia recorde below normal rains for the month under review

Update on River Levels

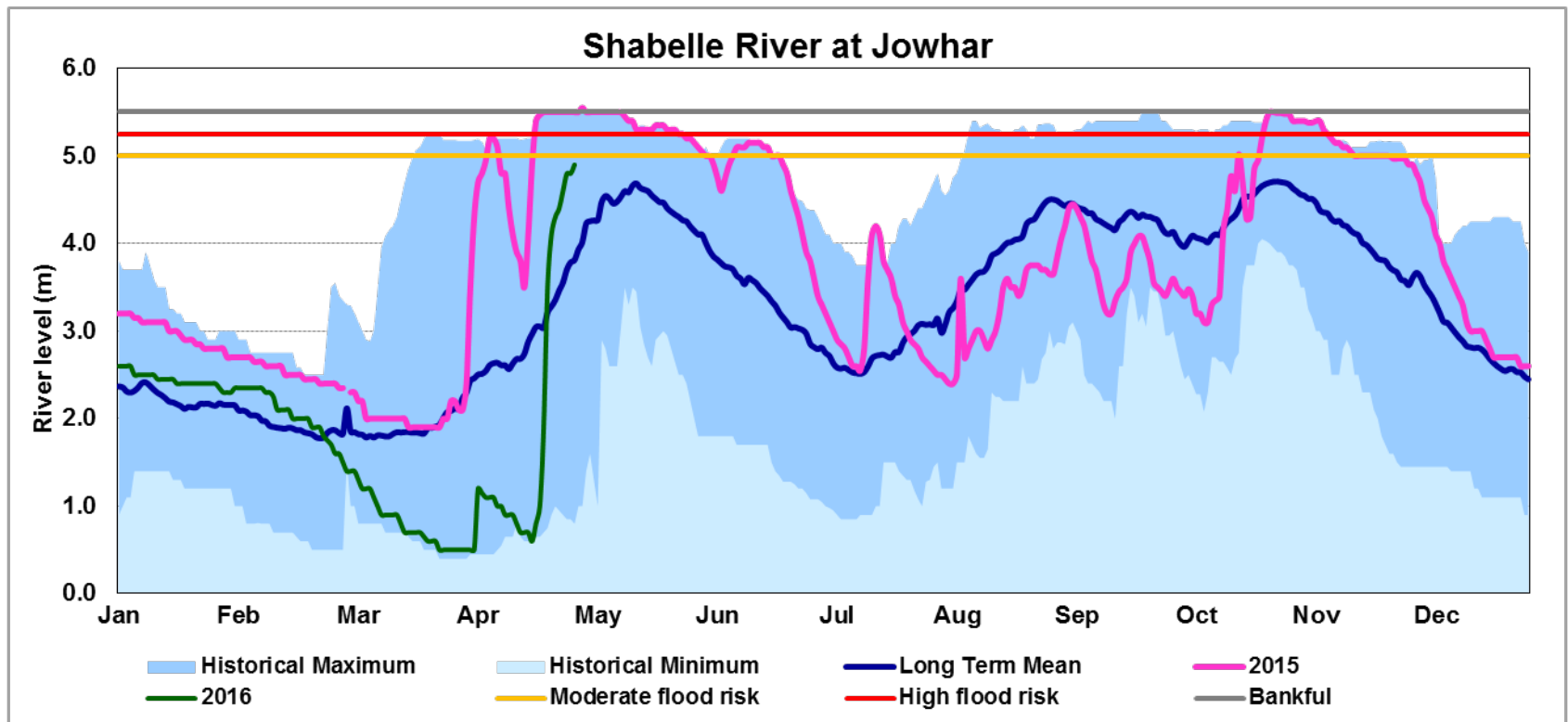
- Moderate to heavy rains continued to be experienced within the Ethiopian highlands which contributes about 90% of river flow to the Juba and Shabelle rivers in Somalia
- River levels along the two rivers inside Somalia have subsequently been rising since the last week.
- The rising trend is expected to continue in the coming week
- There is a possibility of flooding in the lower reaches of Shabelle in the coming days

Shabelle River level at Belet Weyne as of 29 April 2016



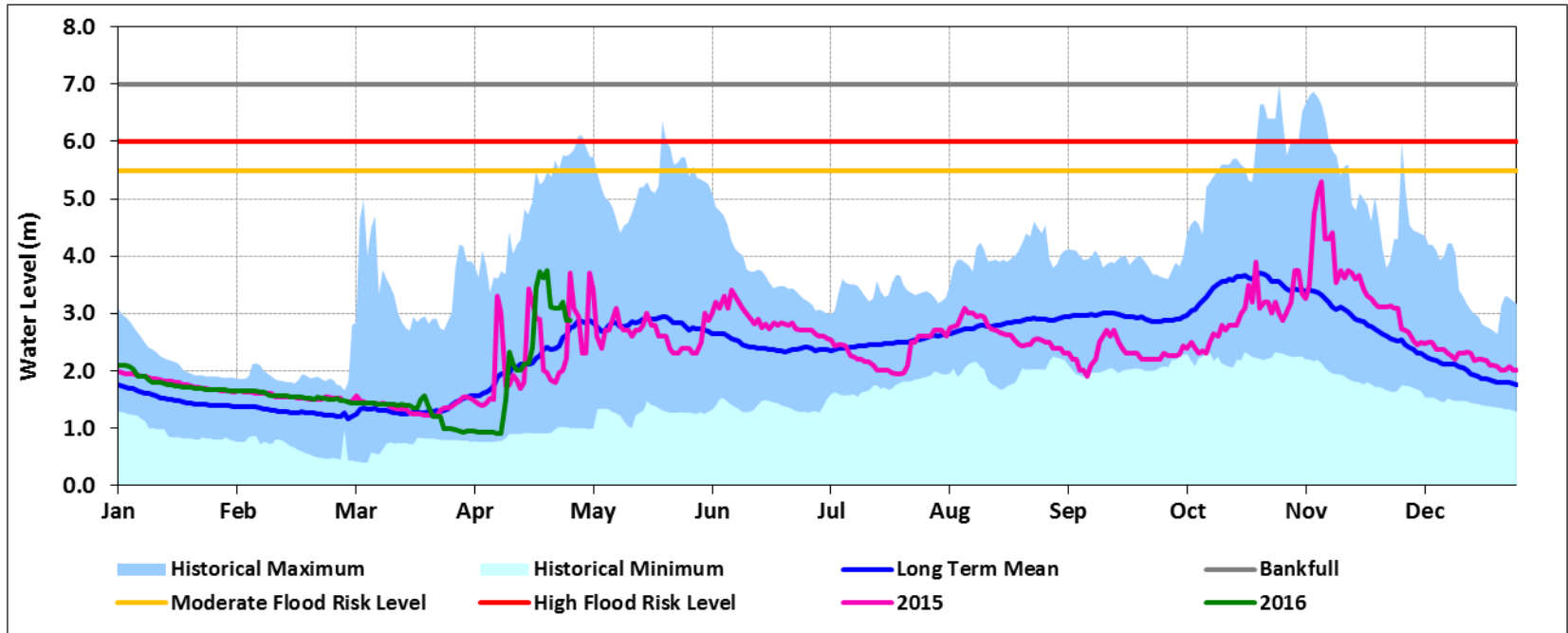
River levels along Shabelle increased over the last week and are currently above the long term average following the heavy rains received in upper catchment in **Ethiopia**.

Shabelle River level at Jowhar as of 29 April 2016



- River levels at Jowhar sharply increased over the last few days
- Today's level is 5.00m, which is within the moderate risk level
- Flooding in Jowhar and lower reaches of Shabelle likely in the coming week due to the increasing river levels and the rainfall forecast
 - Floods from a river breakage have been reported between Bardheere and Tugaarey in Middle Shabelle

Juba River level at Luuq as of 29 April 2016



- River levels along the Juba River have been fluctuating since the start of the season.
- The levels are currently within the long term mean, and expected to rise in the next few days with no immediate threat of flooding foreseen along Juba

Rainfall Forecast

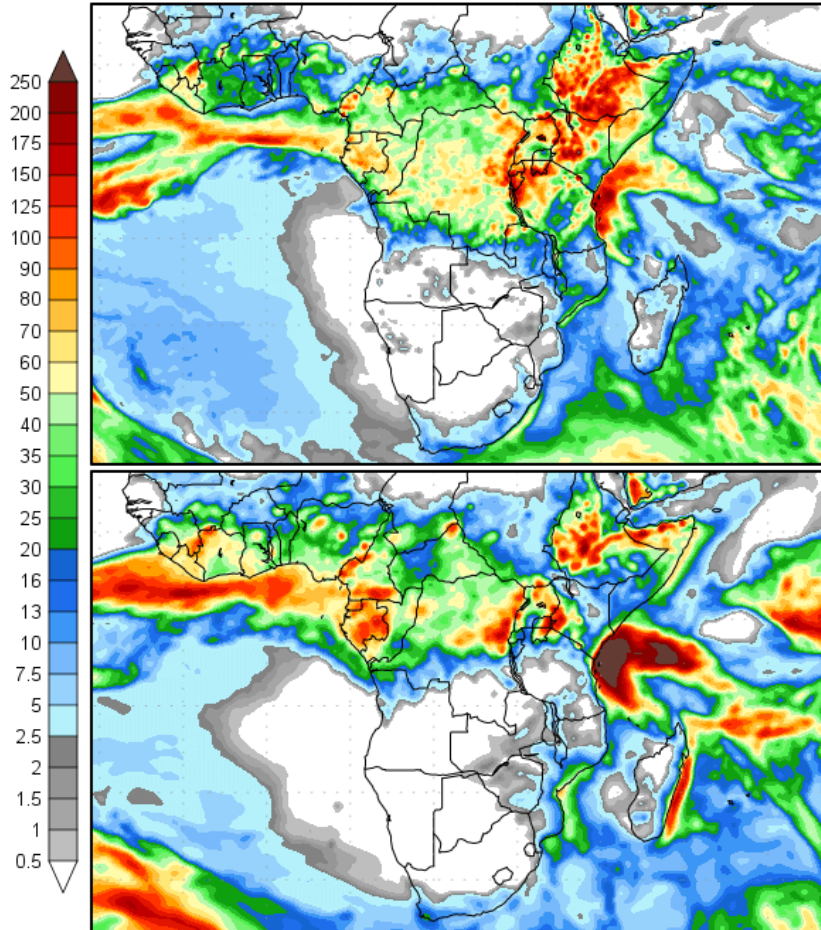
29 April -15 May 2016

Precipitation Forecasts

Precipitation (mm)
during the period:

Fri, 29 APR 2016 at 00Z
-to-
Sat, 07 MAY 2016 at 00Z

Sat, 07 MAY 2016 at 00Z
-to-
Sun, 15 MAY 2016 at 00Z



Widespread rains
across Somalia
expected in the next
two weeks

Conclusion

- There has been a widespread of rainfall activities across the country and especially in SL and Southern regions.
- Even with some rains being reported in Puntland and central regions, there remains a water deficit in the areas.
- Extreme drought conditions continue to be experienced in Puntland; Given the rainfall forecast for the coming two weeks the condition is expected to improve in terms of pasture and water availability.
- Given the rainfall forecast in the Shabelle basin both in Ethiopian and Somalia and the rising trend of river levels, there is a moderate risk of flooding in the lower reaches of the river
- There is no risk of flooding foreseen along the Juba
- SWALIM and other technical partners will keep monitoring and updating the situation during the coming season



Questions or comments please send to

Swalim@fao.org

Thank you very much