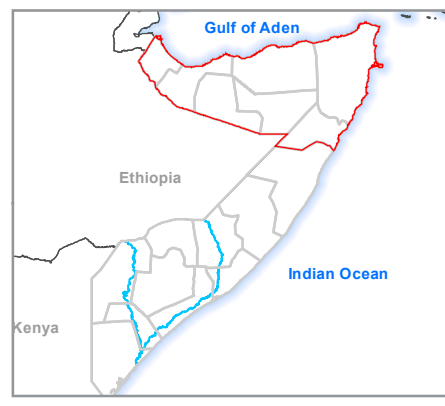
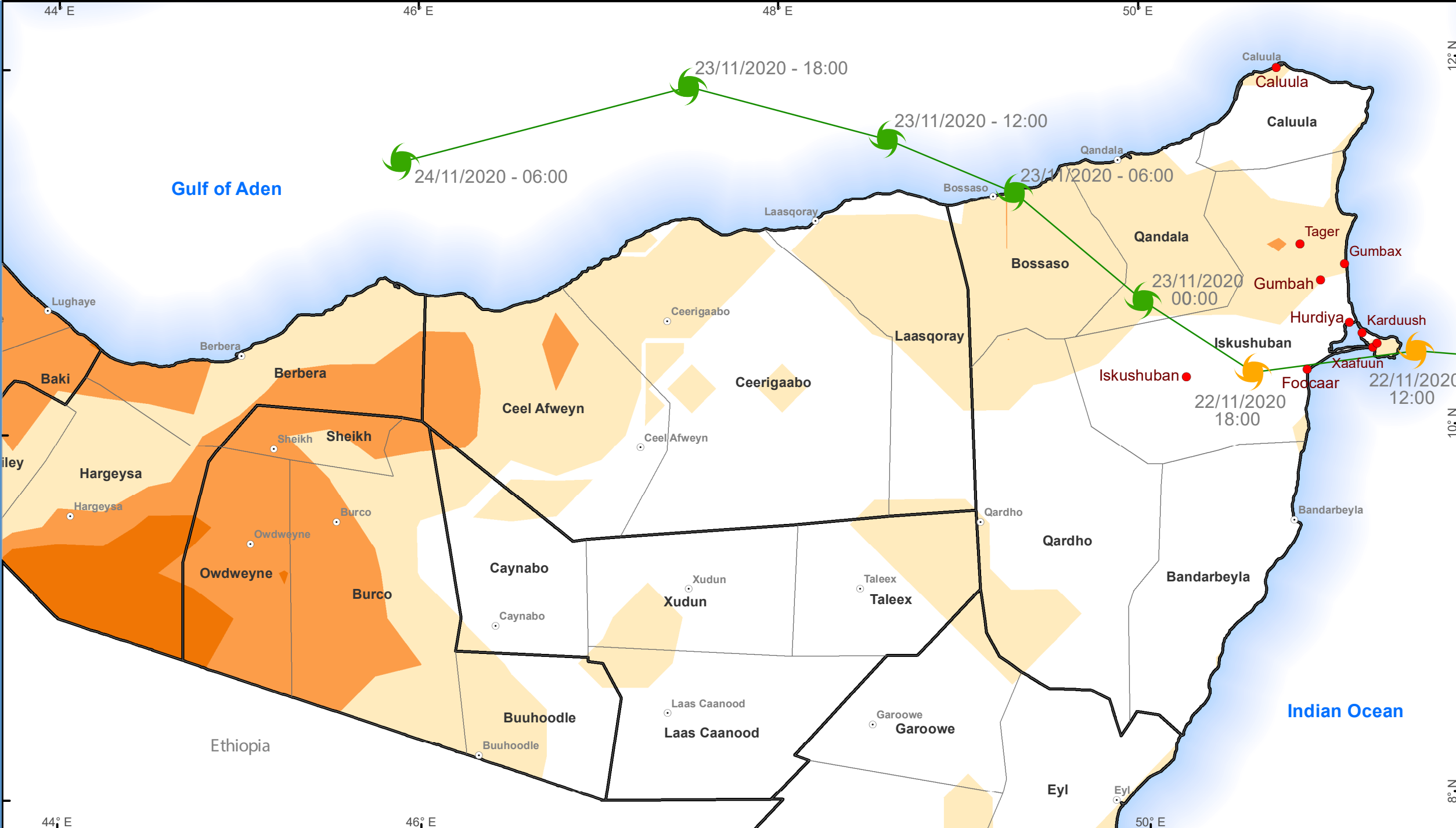


# TROPICAL STORM GATI-20



Affected/Exposed Villages	
Wind Buffer Regions	No. of villages
60Km/hr	0
90Km/hr	28
120Km/hr	210
<b>Total</b>	<b>238</b>

**Legend**

- Hardest Hit Villages

**Wind Node Speed & storm track**

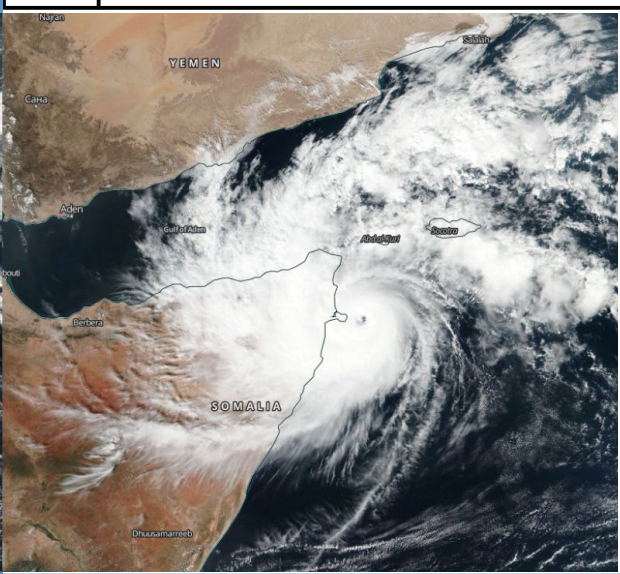
- 🌀 < 110 Km/h
- 🌀 110 - 185 Km/h
- Storm Track

**72 Hours Rainfall forecast (mm)**

- ☐ No Rains
- ☐ Light Rains
- ☐ Light to Moderate
- ☐ Moderate to Heavy

**Others**

- Major Town
- ☐ District boundary
- ☐ Region Boundary



STORM GATI IMPACT ON POPULATION AND OTHER SECTORS				
District	Total population	IDP Population	Houses destroyed	Sectoral impacts
Ceeriqaabo	205,318	810	642 +	<ul style="list-style-type: none"> <li>• 8 Human death,</li> <li>• Strong winds,</li> <li>• Heavy rains,</li> <li>• Floods,</li> <li>• Fishing boats and gears damaged,</li> <li>• Unconfirmed number of livestock death,</li> <li>• Road and communication network cutoff</li> </ul>
Laasqoray	238,855	100		
Bossaso	469,566	49,000		
Bandarbayla	15,481	-		
Caluula	48,986	-		
Iskushuban	58,415	-		
Qandala	52,111	-		

