

Map Reference:
SOM_WATER_AFGOOYE_EVACUATION_SITES_SWALIM_03102023_A3

Produced by:
The Somalia Water and Land Information Management Project (SWALIM).

SWALIM is a multi-donor project implemented by the United Nation's Food and Agriculture Organization (FAO)

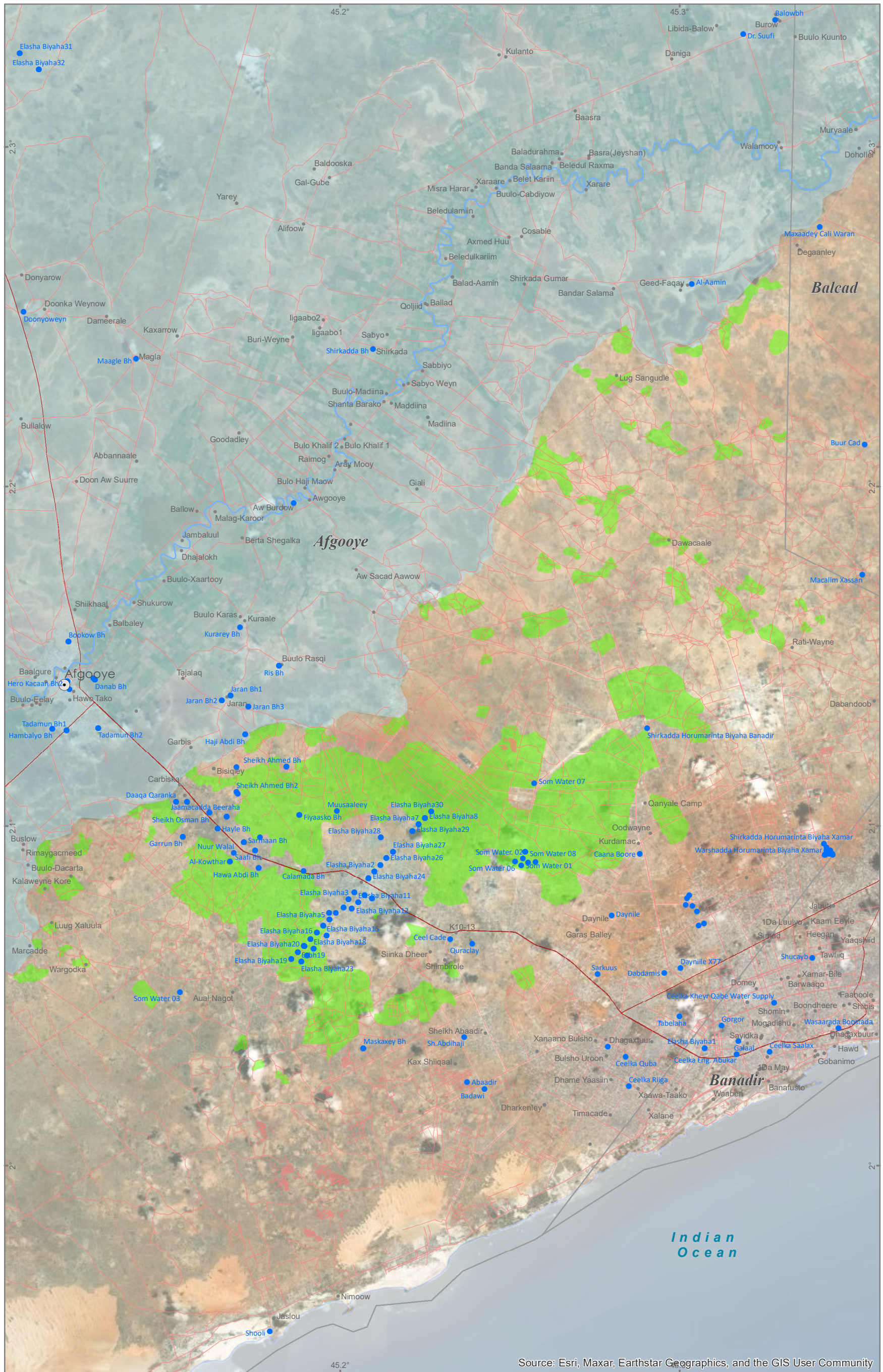
For copies of digital data please contact: swalim@fao.org

Methodology:
A suitability analysis was undertaken to identify suitable higher grounds for evacuation during flood events. The analysis considered 9 parameters namely:
1. Distance from the Projected Flood Extent
2. Elevation
3. Areas of Gentle Slope
4. Topographic Wetness Index (TWI)
5. Drainage Density
6. Proximity to Strategic Boreholes
7. Proximity to Existing Settlements
8. Areas of suitable Land Cover and
9. Proximity to Roads

Please consult the methodology paper that accompanies this map for further details.

Disclaimer:
A Field Assessment on the suitability of each site is required before any interventions.

Satellite data: Maxar, Google
Other dataset: FAO, UNDP, OSM
Analysis: FAO-SWALIM
Map projection: Geographic
Datum: WGS 84



Source: Esri, Maxar, Earthstar Geographics, and the GIS User Community