

**Map Information**

**Map Reference:**  
SOM\_WATER\_BW\_EVACUATION\_SITES\_SWALIM\_15092023\_A3

**Produced by:**  
The Somalia Water and Land Information Management Project (SWALIM).

SWALIM is a multi-donor project implemented by the United Nation's Food and Agriculture Organization (FAO)

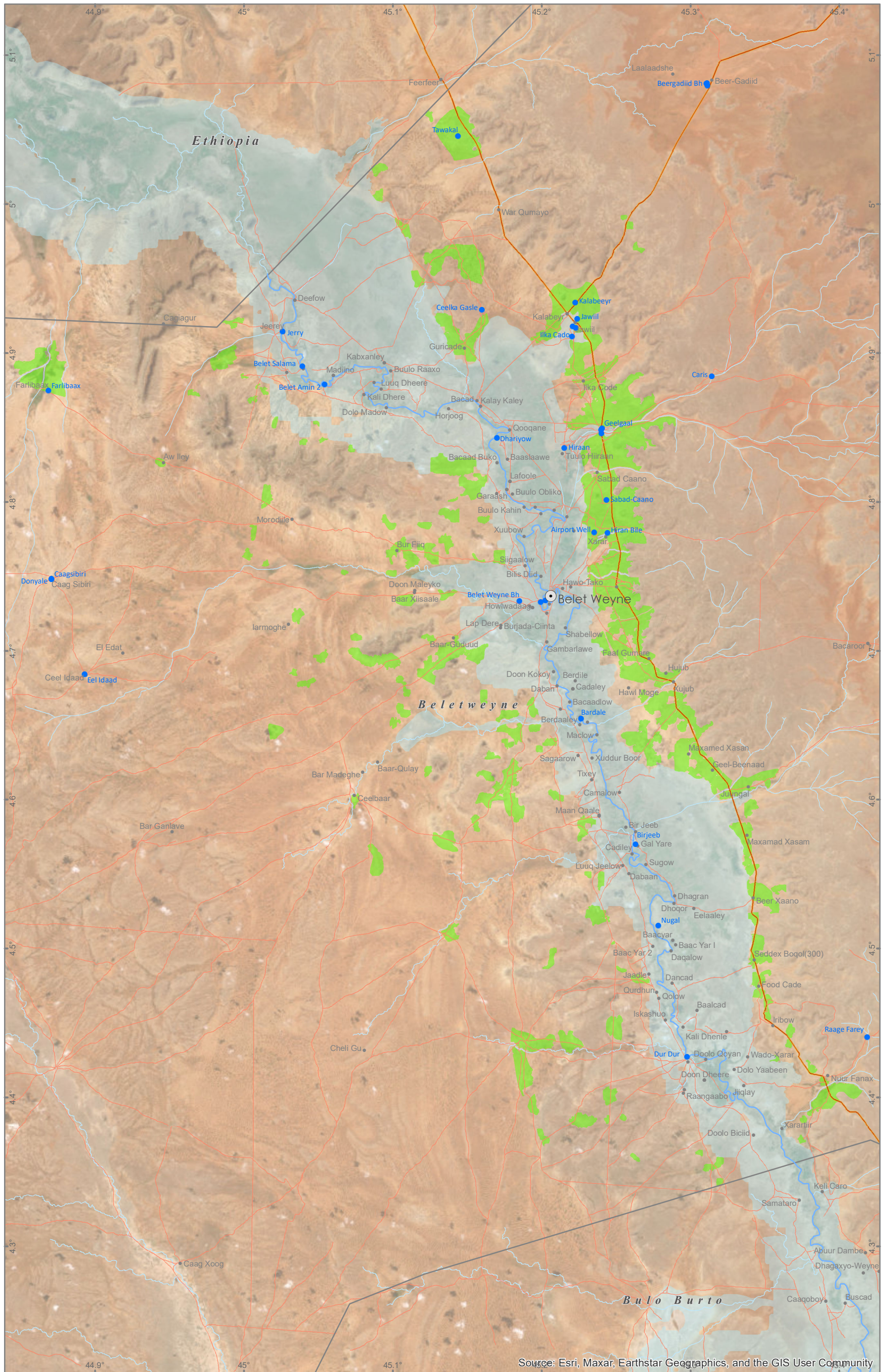
For copies of digital data please contact: [swalim@fao.org](mailto:swalim@fao.org)

**Methodology:**  
A suitability analysis was undertaken to identify suitable higher grounds for evacuation during flood events. The analysis considered 9 parameters namely:  
1. Distance from the Projected Flood Extent  
2. Elevation  
3. Areas of Gentle Slope  
4. Topographic Wetness Index (TWI)  
5. Drainage Density  
6. Proximity to Strategic Boreholes  
7. Proximity to Existing Settlements  
8. Areas of suitable Land Cover and  
9. Proximity to Roads

Please consult the methodology paper that accompanies this map for further details.

**Disclaimer:**  
A Field Assessment on the suitability of each site is required before any interventions.

**Satellite data:** Maxar, Google  
**Other dataset:** FAO, UNDP, OSM  
**Analysis:** FAO-SWALIM  
**Map projection:** Geographic  
**Datum:** WGS 84



The boundaries and names on this map do not imply official endorsement or acceptance by the United Nations.

