



AFRICA - Somalia



SOMALIA - River Shabelle



Legend

- Open Breakages (52)
- ▲ Overflows (9)
- ▲ Potential Overflows (17)
- Potential Breakages (180)
- Closed Breakages With Sand Bags (25)
- ★ National Capital
- Major Town
- Settlement
- Major Road
- Minor Road
- Regional Boundary
- District Boundary
- Rivers

Map Information

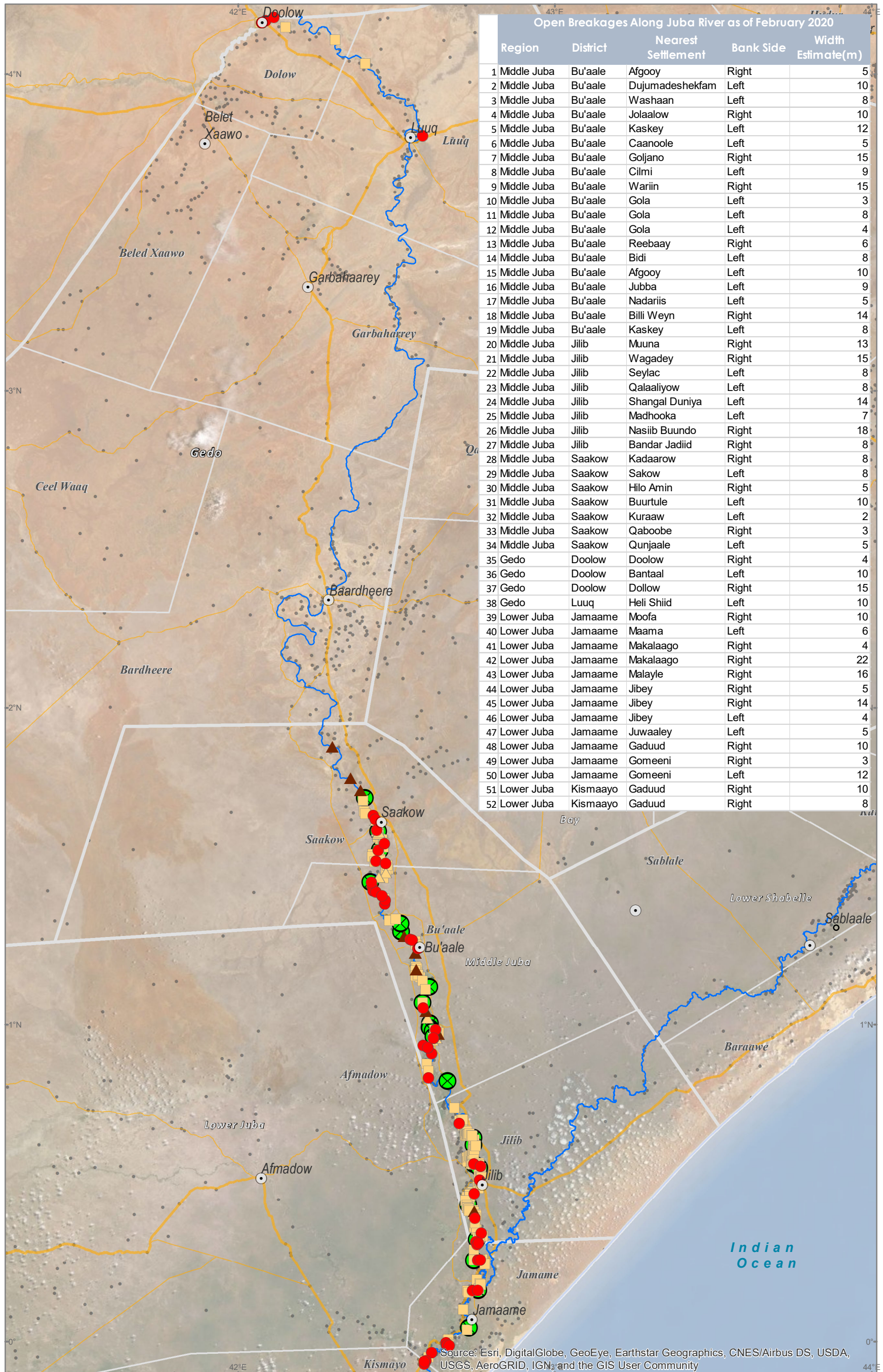
Map Reference:
WAT-BREAKAGES-JUBA-FEB.
2020-20200302-A3-001

Produced by:
The Somalia Water and Land Information Management Project (SWALIM).

SWALIM is a multi-donor project implemented by the United Nation's Food & Agriculture Organization

For copies of digital data please contact: swalim@fao.org

Satellite data: WV2/WV3
Imagery dates: Sept 2016 - Feb 2020
Imagery resolution: 0.3 - 0.5 Meter
Imagery source: Digital Globe
Other dataset: FAO-SWALIM, UNDP
Analysis: FAO-SWALIM
Map projection: Geographic
Datum: WGS 84



Open Breakages Along Juba River as of February 2020					
	Region	District	Nearest Settlement	Bank Side	Width Estimate(m)
1	Middle Juba	Bu'aale	Afgooy	Right	5
2	Middle Juba	Bu'aale	Dujumadeshekfam	Left	10
3	Middle Juba	Bu'aale	Washaan	Left	8
4	Middle Juba	Bu'aale	Jolaalow	Right	10
5	Middle Juba	Bu'aale	Kaskey	Left	12
6	Middle Juba	Bu'aale	Caanoole	Left	5
7	Middle Juba	Bu'aale	Goljano	Right	15
8	Middle Juba	Bu'aale	Cilmi	Left	9
9	Middle Juba	Bu'aale	Wariin	Right	15
10	Middle Juba	Bu'aale	Gola	Left	3
11	Middle Juba	Bu'aale	Gola	Left	8
12	Middle Juba	Bu'aale	Gola	Left	4
13	Middle Juba	Bu'aale	Reebaay	Right	6
14	Middle Juba	Bu'aale	Bidi	Left	8
15	Middle Juba	Bu'aale	Afgooy	Left	10
16	Middle Juba	Bu'aale	Jubba	Left	9
17	Middle Juba	Bu'aale	Nadariis	Left	5
18	Middle Juba	Bu'aale	Billi Weyn	Right	14
19	Middle Juba	Bu'aale	Kaskey	Left	8
20	Middle Juba	Jilib	Muuna	Right	13
21	Middle Juba	Jilib	Wagadey	Right	15
22	Middle Juba	Jilib	Seylac	Left	8
23	Middle Juba	Jilib	Qalaaliyow	Left	8
24	Middle Juba	Jilib	Shangal Duniya	Left	14
25	Middle Juba	Jilib	Madhooka	Left	7
26	Middle Juba	Jilib	Nasiib Buundo	Right	18
27	Middle Juba	Jilib	Bandar Jadiid	Right	8
28	Middle Juba	Saakow	Kadaarow	Right	8
29	Middle Juba	Saakow	Sakow	Left	8
30	Middle Juba	Saakow	Hilo Amin	Right	5
31	Middle Juba	Saakow	Buurtule	Left	10
32	Middle Juba	Saakow	Kuraaw	Left	2
33	Middle Juba	Saakow	Qaboobe	Right	3
34	Middle Juba	Saakow	Qunjaale	Left	5
35	Gedo	Doolow	Doolow	Right	4
36	Gedo	Doolow	Bantaal	Left	10
37	Gedo	Doolow	Dollow	Right	15
38	Gedo	Luuq	Heli Shiid	Left	10
39	Lower Juba	Jamaame	Moofa	Right	10
40	Lower Juba	Jamaame	Maama	Left	6
41	Lower Juba	Jamaame	Makalaago	Right	4
42	Lower Juba	Jamaame	Makalaago	Right	22
43	Lower Juba	Jamaame	Malayle	Right	16
44	Lower Juba	Jamaame	Jibey	Right	5
45	Lower Juba	Jamaame	Jibey	Right	14
46	Lower Juba	Jamaame	Jibey	Left	4
47	Lower Juba	Jamaame	Juwaaley	Left	5
48	Lower Juba	Jamaame	Gaduud	Right	10
49	Lower Juba	Jamaame	Gomeeni	Right	3
50	Lower Juba	Jamaame	Gomeeni	Left	12
51	Lower Juba	Kismaayo	Gaduud	Right	10
52	Lower Juba	Kismaayo	Gaduud	Right	8



0 20 40 80 Km

The boundaries and names on this map do not imply official endorsement or acceptance by the United Nations.

Funding Agencies