

Breakage Category Description	
Breakage Category	Category Description
A	New open breakages that did not exist in Feb 2020, and detected using the most recent images in Aug 2020
B	Open breakages detected in the past years and confirmed open either in Feb 2020 or in Aug 2020
C	Open breakages detected in August 2020, previously (Feb 2020) detected as either Potential breakages or Closed breakages
D	Open breakages detected in the past years not assessed both in Feb 2020 and Aug 2020 due to unavailability of most recent images

Legend	
	Open Breakages (109)
	Overflows (99)
	Potential Overflows (128)
	Potential Breakages (105)
	Closed Breakages With Sand Bags (60)
	National Capital
	Major Town
	Settlement
	Major Road
	Minor Road
	Regional Boundary
	District Boundary
	Rivers
	Historical Flood Extents
	Agriculture

Map Information

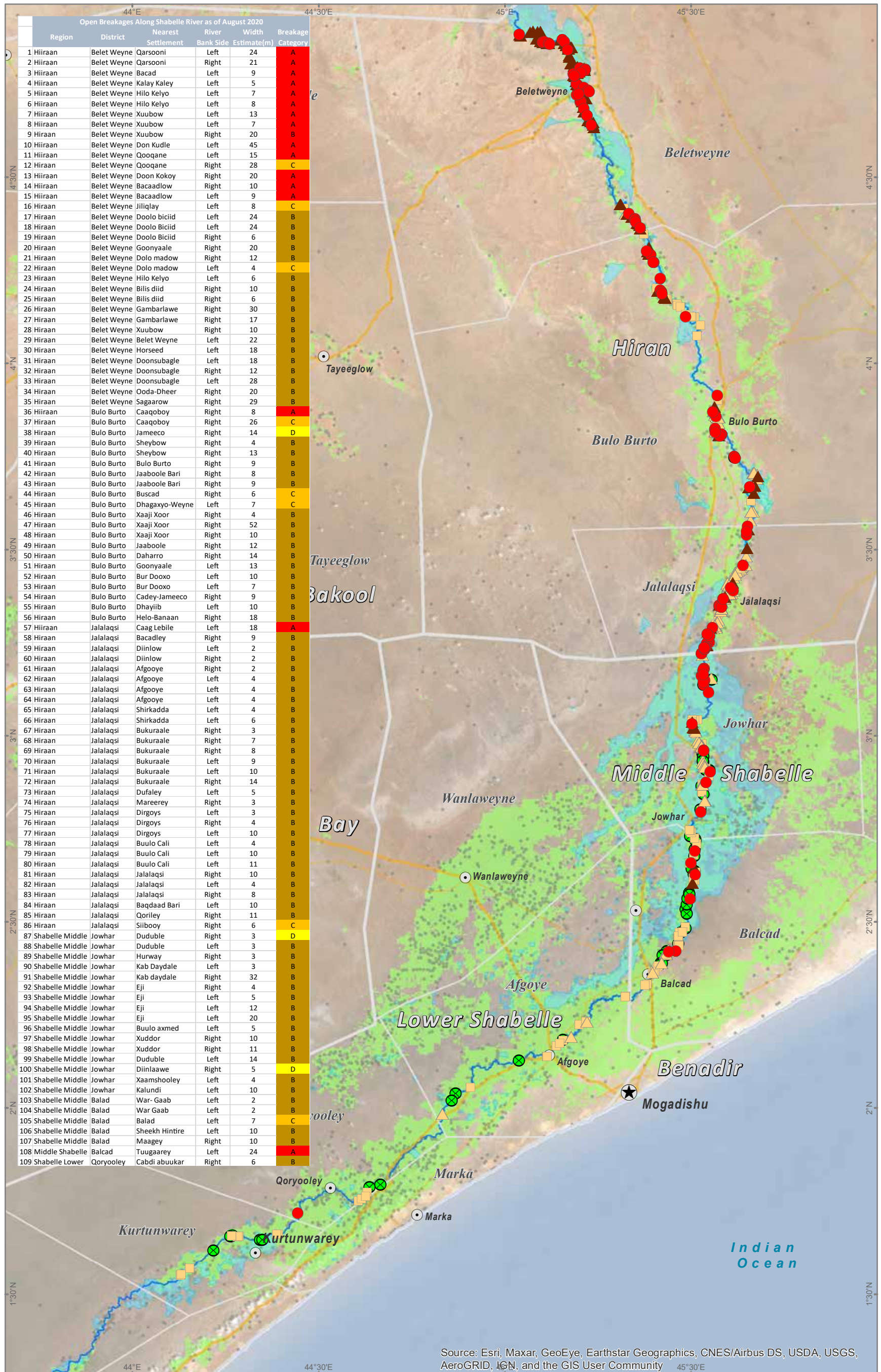
Map Reference:
WAT-BREAKAGES-SHABELLE-AUG.
2020-20200827-A3-001

Produced by:
The Somalia Water and Land Information Management Project (SWALIM).

SWALIM is a multi-donor project implemented by the United Nation's Food & Agriculture Organization

For copies of digital data please contact: swalim@fao.org

Satellite data: WV2/WV3
Imagery dates: Sept 2018 - Aug 2020
Imagery resolution: 0.3 - 0.5 Meter
Imagery source: Digital Globe
Other dataset: FAO-SWALIM, UNDP
Analysis: FAO-SWALIM
Map projection: Geographic
Datum: WGS 84



Source: Esri, Maxar, GeoEye, Earthstar Geographics, CNES/Airbus DS, USDA, USGS, AeroGRID, IGN, and the GIS User Community