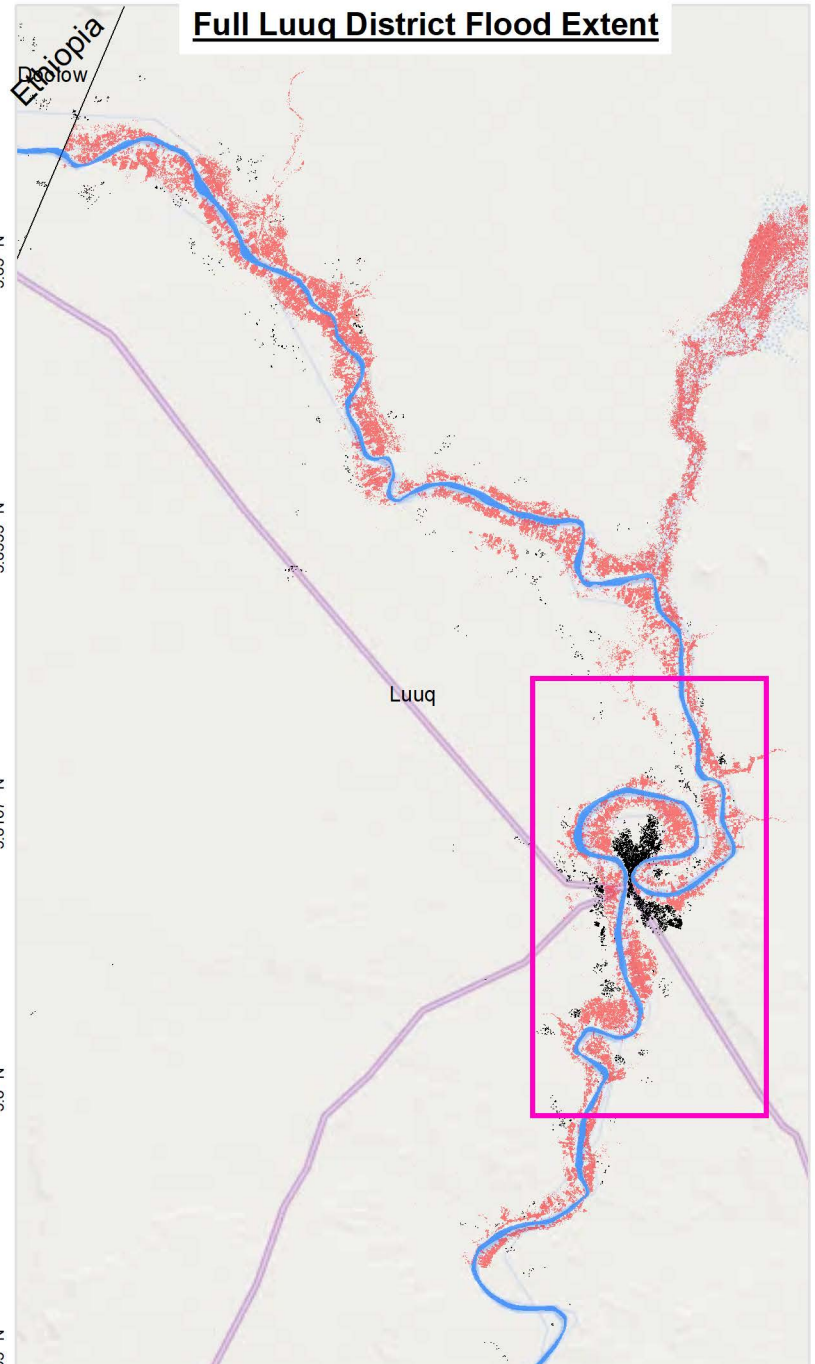
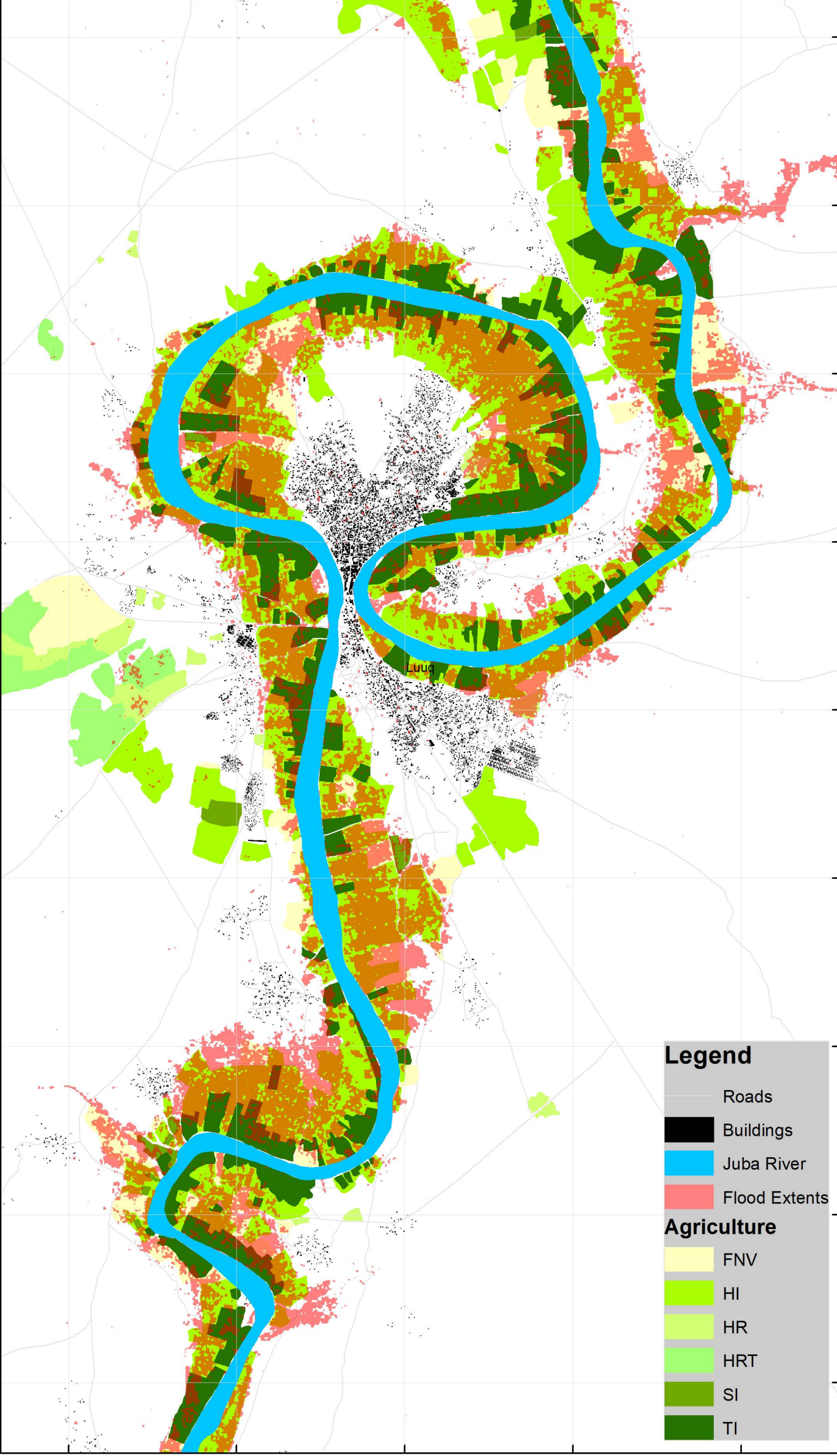




### LUUQ DISTRICT RIVERINE FLOOD IMPACT SUMMARY AS AT 7TH NOVEMBER 2023

Buildings(#)		Road Length (Km)		Agriculture Area (Ha)		Total Flood area(Ha)
Flooded	Total	Flooded	Total	Flooded	Total Area	
316	13,966	29	4,875	3,013	8,170	<b>6,494</b>



#### Flooded Agriculture

Agriculture Type	Area (Ha)
Fallow or Natural Vegetation (FNV)	630
Herbecious Irrigated(HI)	2,120
Herbecious Rainfed (HR)	15
Herbecious Rainfed with Scattered Trees (HRT)	3
Shrub Irrigated (SI)	14
Tree Irrigated (TI)	232
<b>Grand Total</b>	<b>3,013</b>

#### Road Length Flooded (Km)

Road Category	Length
Primary	0.4
Residential	1.1
Tertiary	1.1
Track	8.7
unclassified	17.5
<b>Grand Total</b>	<b>28.8</b>



Map Ref: Som\_Juba\_River\_Floods\_Nov\_2023  
 Map Produced by: The Somalia Water and Land Information Management Project (SWALIM).  
 SWALIM is a Multi-donor Project Implemented by the United Nations' Food & Agriculture Organization.  
 For copies of digital data please contact: swalim@fao.org  
 Map projection: Geographic Coordinates, WGS 84 datum.

Data Source  
 Flood Data - UNOSAT- Sentinel1  
 Buildings and Roads - OSM  
 Agriculture Mask - SWALIM  
 Map Date 09/11/2023  
 The boundaries and names and the designations used on this map do not imply official endorsement or acceptance by the United Nations.