



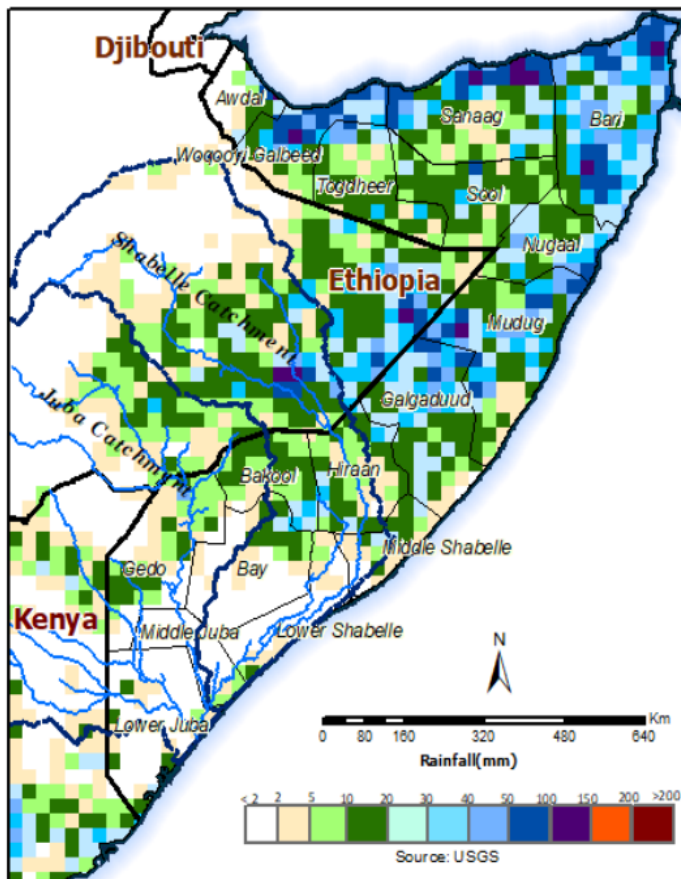
The cumulative rainfall forecast for the next three and seven days (Map 1 and 2) indicates moderate to heavy rainfall in most parts of the country starting from 06 December 2019. Specifically heavy rains are expected in the northern and central regions from 06 December 2019, these rains are associated with the passage of a tropical storm which is currently located in the Indian Ocean. Cumulative amounts exceeding 100mm may fall in coastal areas of Sanaag, Bari, Nugaal and Mudug regions. Given the forecast, there is a high risk of flash floods in the areas where heavy rains are expected. Of great concern is the fisheries and livestock sectors along the coastal areas which may be impacted negatively by the heavy rains.

Further, heavy rains will be expected on 09 and 10 December 2019 within the Juba and Shabelle river basins inside Somalia and within the Ethiopian highlands.

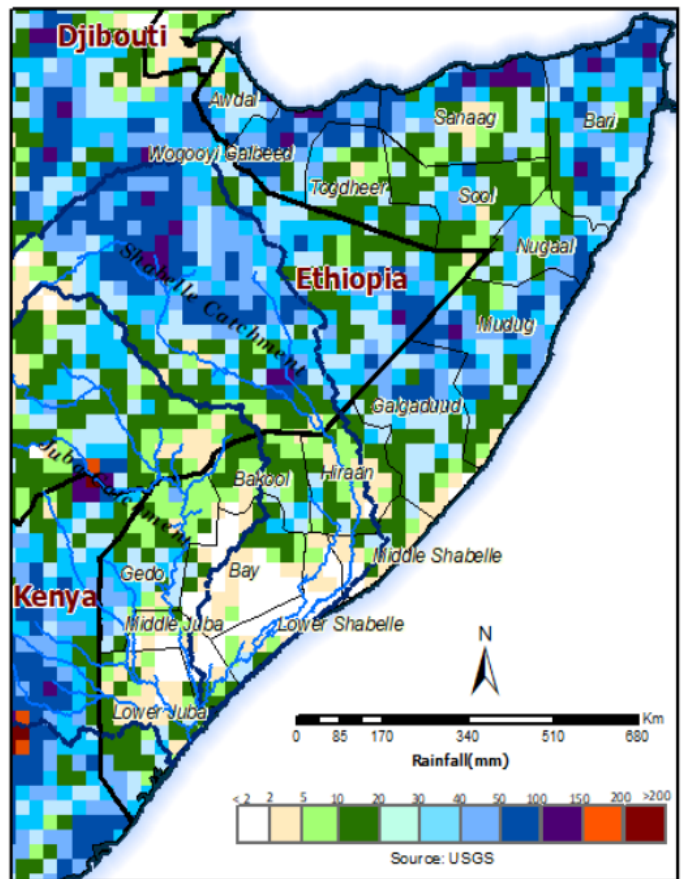
River levels along the Shabelle remain high and are anticipated to remain so in the coming week. There is a high risk of flooding along the Shabelle River. Observed river levels along the Juba increased sharply over the last few days following heavy rains in the Ethiopian highlands. River levels at Luuq and Dollow are at moderate risk of flooding while levels at Bardheere are currently at high risk level. The high levels will be sustained in the coming days and are expected to start decreasing towards the end of the forecast period.

Users are advised that this is a forecast, and at times there may be discrepancies between estimates and actual amounts of rainfall received. Information on the forecast and observed river levels are updated daily on this link: <http://frims.faoswalim.org>

Map 1: 3 day cumulated rainfall forecast (05 - 07 Dec 2019)



Map 2: 7 day cumulated rainfall forecast (05– 11 Dec 2019)



This update is produced by the: FAO - Somalia Water and Land Information Management—SWALIM Project.
For more information please contact swalim@fao.org or visit <http://www.faoswalim.org>

FAO SWALIM Technical Partners:



SWALIM is Managed by FAO and Currently Funded by:

