



Somalia Flood Update

Issued: 13 May 2020

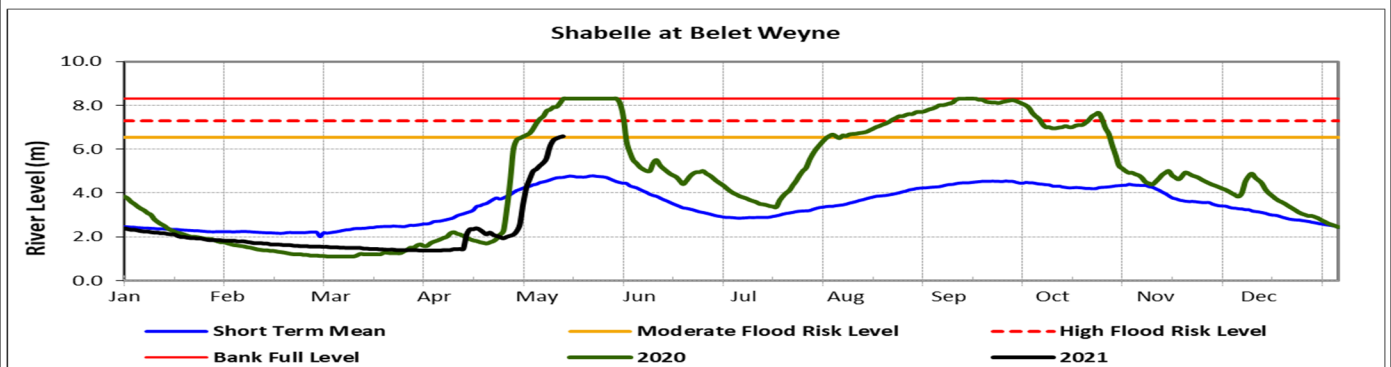
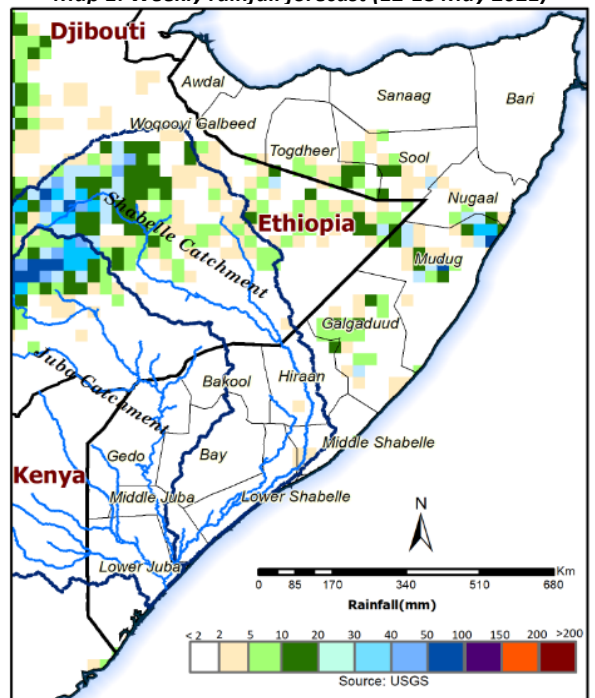
The coastal areas of Nugaal, Mudug and Galgaduud regions experienced heavy rains in the last 48 hours leading to flash floods in some areas. The Juba and Shabelle basins saw a significant reduction of rainfall amounts within the same period. However, observed levels continued to rise along the Juba and Shabelle Rivers both in Somalia following heavy rains in Ethiopia in the previous weeks. The rainfall forecast for the period between 12–18 May 2021 is pointing towards light to moderate rains within the upper parts of the Ethiopian highlands and light rains in most parts of Somalia with exception of a few pockets in Mudug that may record moderate rains during the forecast period.

Shabelle River: The flood wave from the Ethiopian highlands along the Shabelle River continued to stream into Somalia leading to gradual increase of river levels. The level in Belet Weyne today is 6.60 m which is beyond the moderate flood risk level. The reduced amounts of rainfall in the highlands has subsequently led to a slower rate of flow into Belet Weyne. However, there still remains a **high risk level of flooding** in Belet Weyne district as the water continue to stream in. The flood wave from Belet Weyne will be transmitted to the middle and lower reaches towards the end of the week and therefore there is a **moderate risk** of flooding in these areas during this week. The situation could be further exacerbated by weak river embankments and open river banks, which is already causing floods in Jowhar.

Juba River: The river levels along the Juba fluctuated in the last two days with a slight reduction in Dollow and Luuq stations and an increase in the mid reaches of Bardheere and Buulle. Given the rainfall forecast in the Ethiopian highlands, and the reducing river levels in upper parts of the river, the high risk of flooding changes to moderate level in the mid and lower parts of the river.

Users are advised that this is a forecast and at times there may be discrepancies between estimates and actual amounts of rainfall received. Information on the forecast and observed river levels is updated daily and can be found on this link: <http://frrims.faoswalim.org>.

Map 1: Weekly rainfall forecast (12-18 May 2021)



This update is produced by the: FAO - Somalia Water and Land Information Management—SWALIM Project. For more information please contact swalim@fao.org or visit <http://www.faoswalim.org>

FAO SWALIM Technical Partners:



SWALIM is Managed by FAO and Currently Funded by:

