



# Somalia Rainfall Forecast

Issued: 08 October 2019

Unusual heavy rains were recorded in parts of Juba and Shabelle Catchments in the last few days. Some of the stations that recorded significant amounts in the last three days include Mataban (120mm), Belet Weyne (60mm), Mogadishu (46mm), Dollow (136mm) and Luuq (67mm).

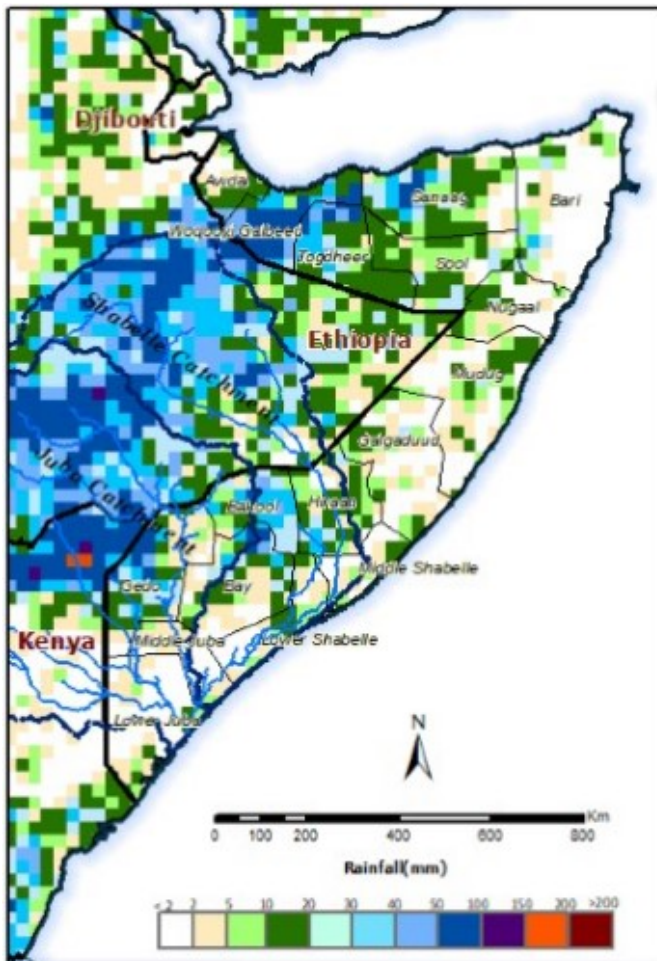
Flash floods and riverine flooding has been reporting in parts of Gedo region following the heavy rains. In Luuq district, unconfirmed acreage of cropped land has been inundated while several people living close to the Juba river in Dollow have been temporarily displaced.

The rainfall forecast for the next three days (Map 1) is calling for moderate rains of up to 50mm cumulatively in many parts of the country. As the week progresses (Map2) the rains will intensify and spread further in space, with many parts of the country recording 50mm and above. Heavy rains of up to 200mm are expected in the Ethiopian highlands during the forecast period.

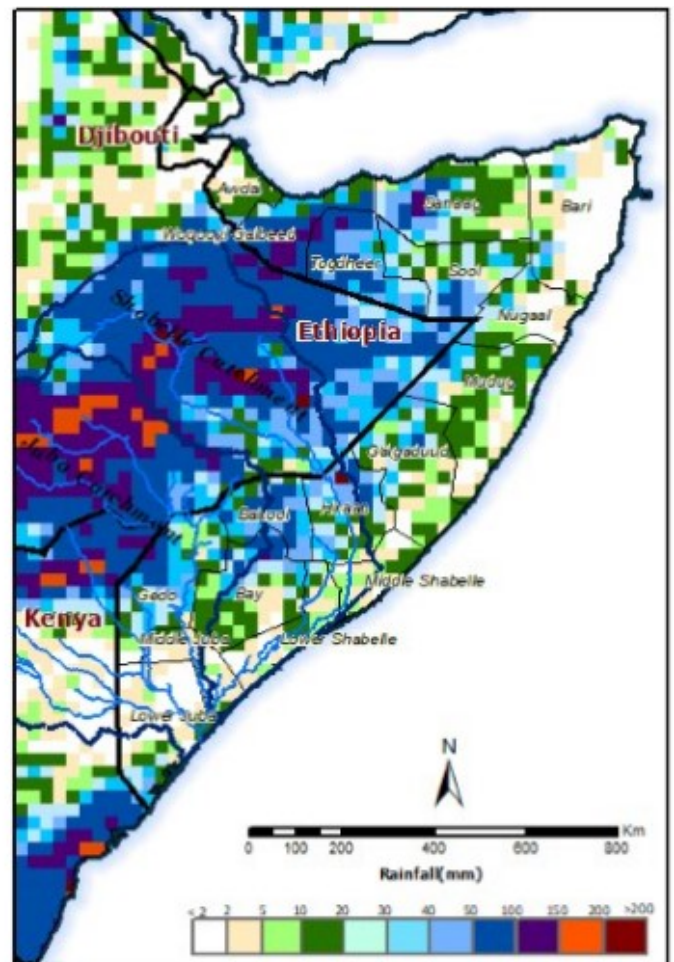
The heavy rains will lead to a further increase in river flow along the Juba and Shabelle Rivers in Somalia, which translates in a high risk of flooding along the two rivers. Areas to watch out for river flooding include the entire channel of Shabelle and Gedo region in Juba basin.

Users are advised that this is a forecast and at times there may be discrepancies between estimates and actual amounts of rainfall received. Information on the forecast and observed river levels is updated daily and can be found on this link: <http://frrims.faoswalim.org>.

Map 1: 3 day cumulated rainfall forecast (08 - 10 Oct 2019)



Map 2: 7-day cumulated rainfall forecast (08 - 14 Oct 2019)



This update is produced by the: FAO - Somalia Water and Land Information Management—SWALIM Project. For more information please contact [swalim@fao.org](mailto:swalim@fao.org) or visit <http://www.faoswalim.org>

FAO SWALIM Technical Partners:



SWALIM is Managed by FAO and Currently Funded by:

