



The Gu rains continued to spread in time and space over the last few days with a few places recording moderate rains in the southern and north western regions. The north eastern and central parts of the country remained dry.

The cumulative rainfall forecast for this week indicates significant spread of the rains to the central and northern parts of the country starting from 18 to 20 April, this will mark the start of the rains in these areas. Some parts of Awdal Region may experience high localized rains of up to 50mm on 19 April 2020, according to the forecast. Similarly, moderate rains are expected over the southern and central parts of the country. In the Ethiopian highland, whose rainfall is largely responsible for increase in river flow along the Juba and Shabelle Rivers inside Somalia, moderate to high rainfall is foreseen in the coming one week.

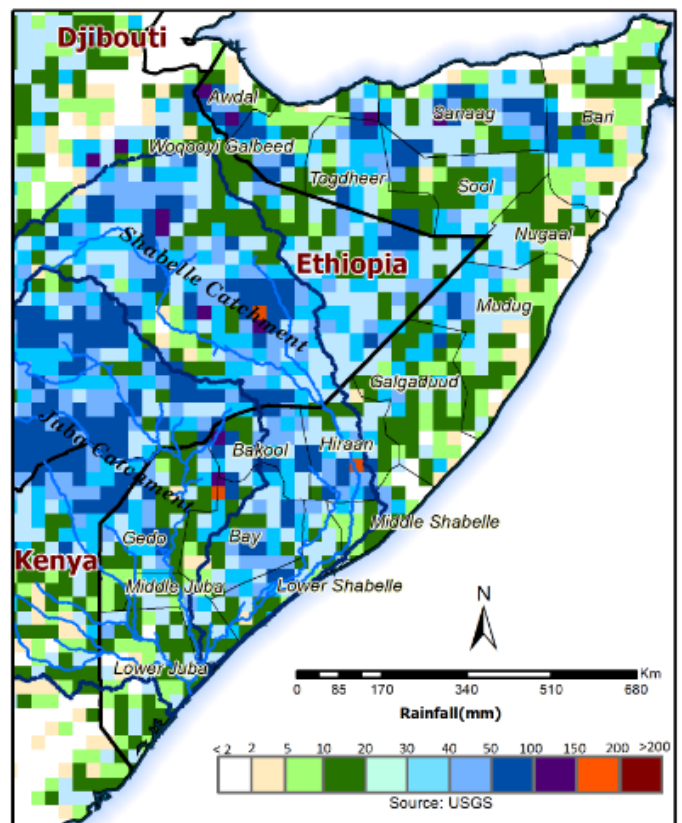
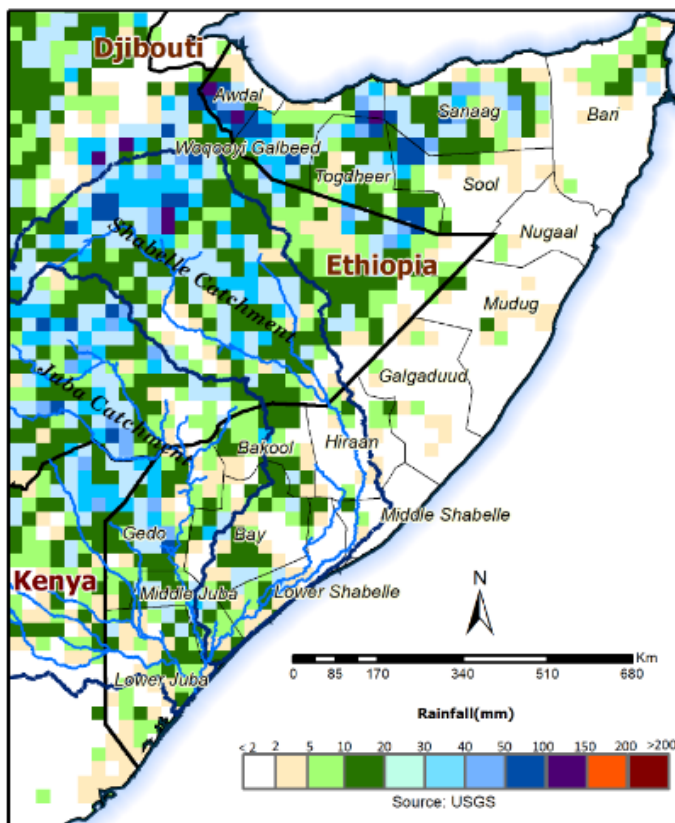
It is worth noting that, the foreseen rains in the coming week are not sufficient to alleviate the current drought conditions in the country, more rains with good temporal and spatial distribution are required during the season in order to improve the situation.

River levels along the Shabelle have increased slightly at Belet Weyne over the last few days, but remains low and below the normal for this period of the year. Along Juba River the levels are within normal for this period. Given the rainfall forecast, a slight increase in the levels for both rivers is expected with no risk of flooding over the next seven days.

Users are advised that this is a forecast and at times there may be discrepancies between estimates and actual amounts of rainfall received. Information on the forecast and observed river levels is updated daily and can be found on this link: <http://frrims.faoswalim.org>.

Map 1: 3 day cumulated rainfall forecast (16 - 18 Apr 2021)

Map 2: 7 day cumulated rainfall forecast (16 - 22 Apr 2021)



This update is produced by the: FAO - Somalia Water and Land Information Management—SWALIM Project.  
For more information please contact [swalim@fao.org](mailto:swalim@fao.org) or visit <http://www.faoswalim.org>

FAO SWALIM Technical Partners:



SWALIM is Managed by FAO and Currently Funded by:

