

Somalia Rainfall Forecast

Issued: 18 October 2017

The three days cumulated rainfall forecast is pointing (Map 1) towards light to moderate rains in central and southern regions of the country as well as the Ethiopian highlands and this is expected to increase in quantity and space as the week progresses, given the one week forecast (Map 2).

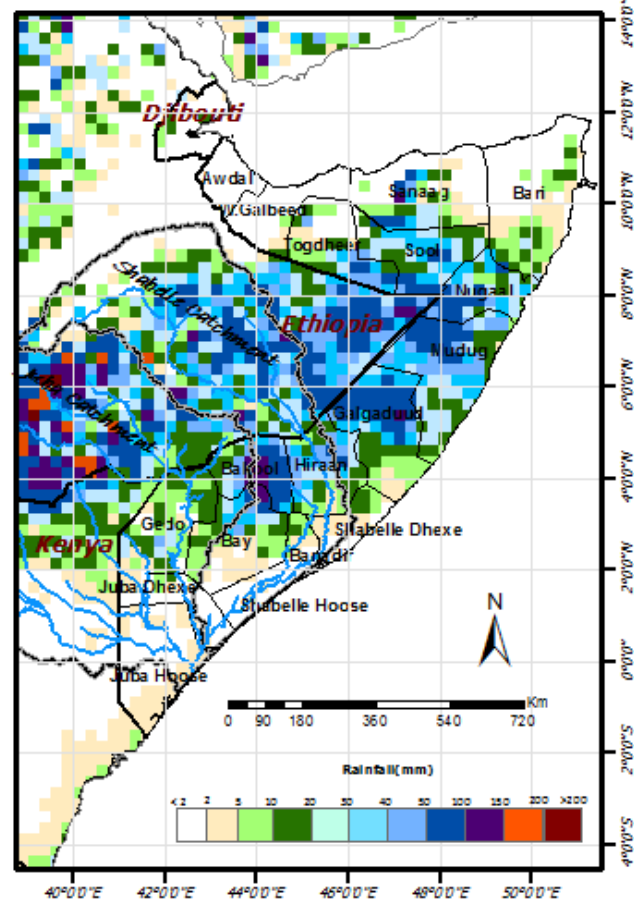
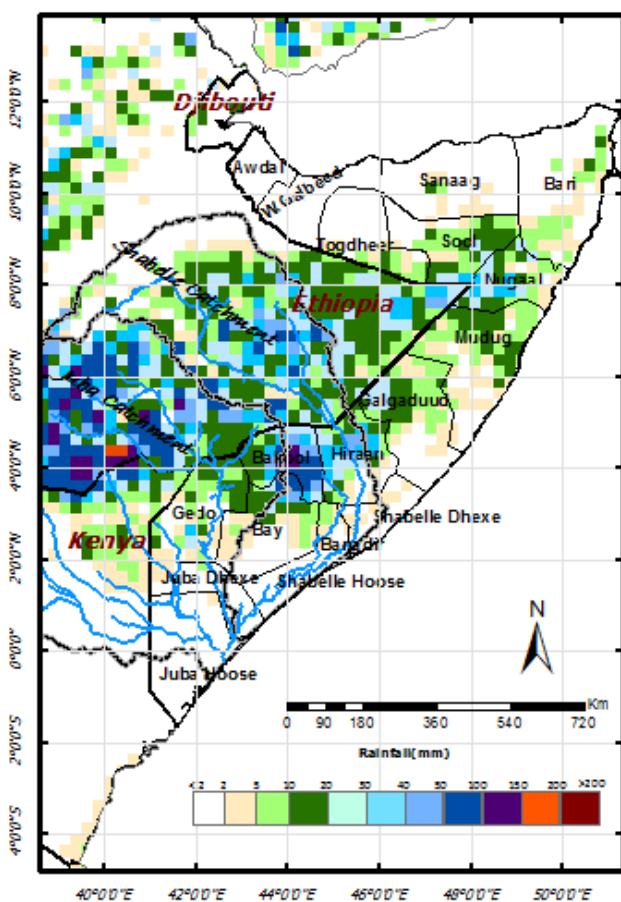
The western parts of Somaliland and southern parts of Somalia including Lower Juba, Lower Shabelle and Middle Shabelle will remain dry during the forecast period.

River levels in the middle reach of Shabelle are currently high with a high risk of flooding in Jowhar and the environs.

Users are advised that this is a forecast and at times there may be discrepancies between forecast and actual amounts of rainfall received. The forecast, observed river levels and rainfall amounts are updated on a daily basis and can be found on this link: <http://systems.faoso.net/frims/>

**Map 1: 3 days rainfall forecast
(18 to 20 October 2017)**

**Map 2: 7-day cumulated rainfall forecast
(18 to 24 October 2017)**



This update is produced by the: FAO - Somalia Water and Land Information Management—SWALIM. For more information regarding this product please contact SO-hydro@fao.org or visit <http://www.faoswalim.org>

SWALIM Technical Partners

SWALIM Funding Agencies