

# Rainfall Forecast Somalia

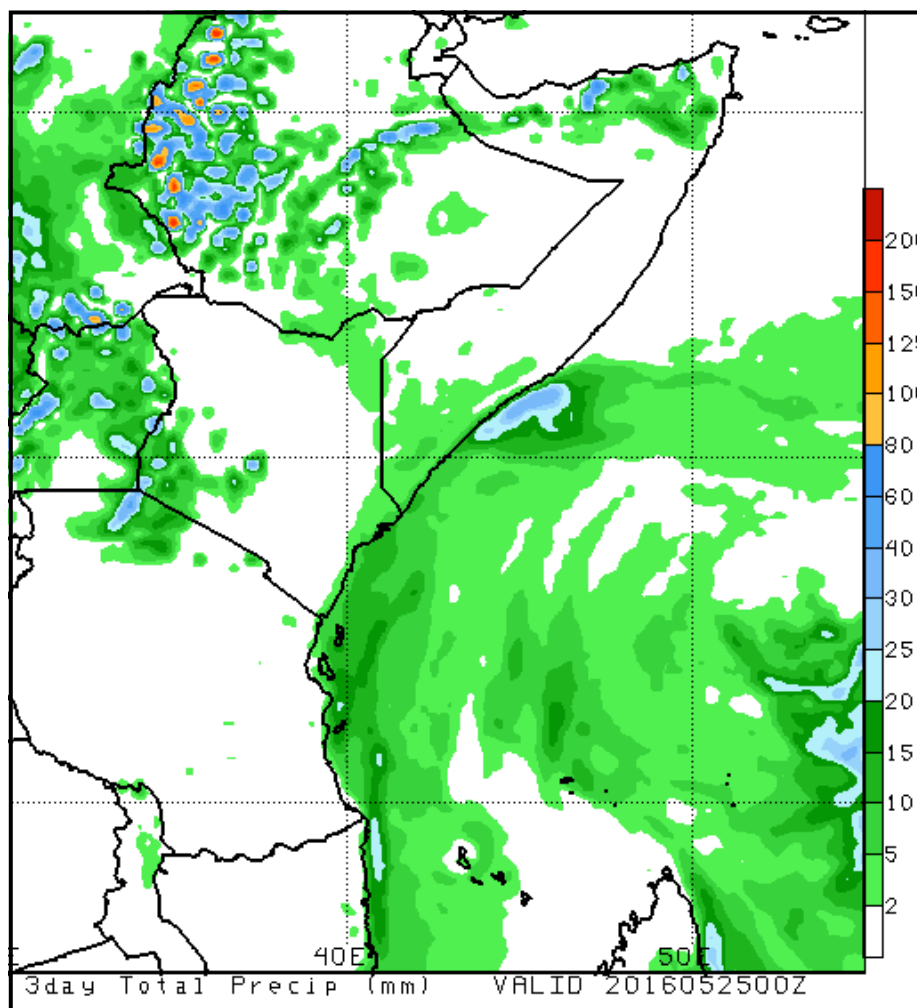
*Issued: 23/05/2016*

Light rains are expected to prevail in a few places within Puntland and Somaliland as well as the coastal areas of southern regions and the upper parts of the Juba and Shabelle River basins in Ethiopia. Other parts of the country will remain dry during the forecast period.

The river levels in the upper parts of Shabelle River in Belet weyne , Hiraan region have remained at full capacity for the last few days. Riverine areas within Belet Weyne town and the surrounding are currently flooded. This flood wave is expected to be transmitted to the downstream reaches in the next few days.

There still remains a **moderate** risk of flooding along the Juba and Shabelle Rivers owing to the high river levels and existing open and weak river banks in the middle and lower reaches.

### 3-day accumulated rainfall forecast (23/05/2016 to 25/05/2016)



Each cell on the map represents the forecasted accumulated rainfall over the next 72 hours

The full forecast grid is available for download at [http://www.cpc.ncep.noaa.gov/products/international/cpci/data/00/fcsts\\_eafrica.shtml](http://www.cpc.ncep.noaa.gov/products/international/cpci/data/00/fcsts_eafrica.shtml)

This update is produced by the: FAO - Somalia Water and Land Information Management—SWALIM. For more information regarding this product please contact [SO-hydro@fao.org](mailto:SO-hydro@fao.org) or visit <http://www.faoswalim.org>

SWALIM Technical Partners



SWALIM Funding Agencies