



The Gu 2020 rainy season (March/April—June) has kicked off in some parts of the country since 20 March 2020. In Somaliland, Wajaale and Aburin stations recorded a total of 68mm and 40mm respectively with other regions receiving less than 30mm. In Puntland, Buhoodle and Baran stations recorded 30mm and 24mm respectively in the last two days. The last 24 hours also saw moderate rains in parts of the Juba and Shabelle basins in the south where Belet Weyne recorded 42mm and Buuale 13mm. The rains are expected to continue spreading in time and space during the coming weeks with the season expected to record enhanced rains before coming to an end in June 2020.

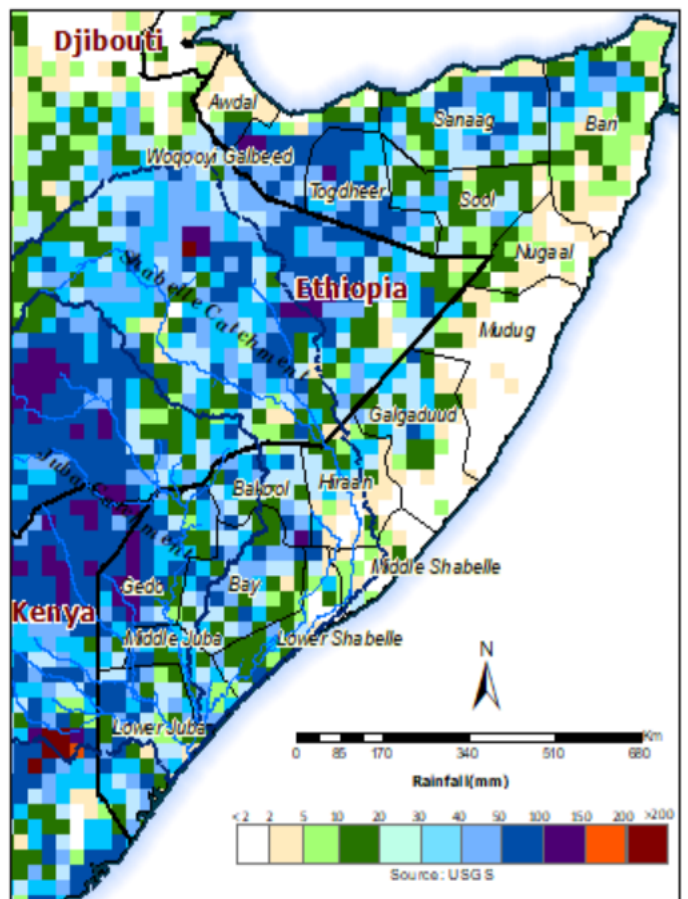
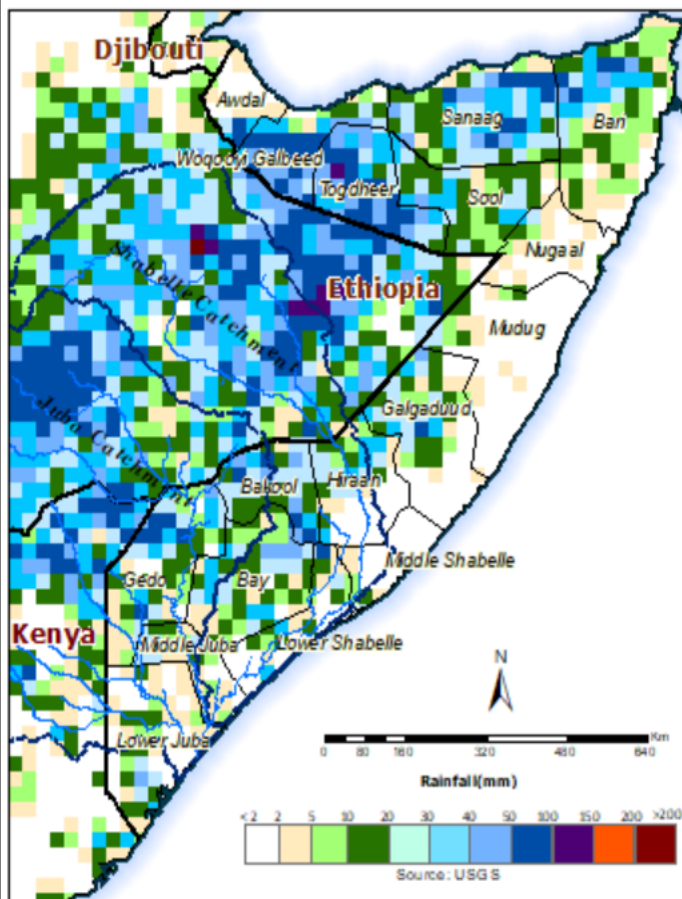
The cumulative rainfall forecast for the next three days (Map 1) indicates light to moderate rains in many regions in the northern areas and scattered places in the south. Moderate rains are also expected in the Ethiopian highland whose rainfall is largely responsible for increase in river flow along the Juba and Shabelle Rivers inside Somalia. The rains will then spread further as the week progresses with more intensity in the Ethiopian highlands and southern parts of Somalia as seen in Map 2. Most parts of the central areas will remain dry in the coming week.

River levels are currently very low along the two rivers. Given the rainfall forecast, the levels will start to increase towards the end of the week with no risk of flooding during the forecast period.

Users are advised that this is a forecast and at times there may be discrepancies between estimates and actual amounts of rainfall received. Information on the forecast and observed river levels is updated daily and can be found on this link: <http://frrims.faoswalim.org>.

Map 1: 3 day cumulated rainfall forecast (24 - 26 Mar 2020)

Map 2: 7 day cumulated rainfall forecast (24 - 30 Mar 2020)



This update is produced by the: FAO - Somalia Water and Land Information Management—SWALIM Project.
For more information please contact swalim@fao.org or visit <http://www.faoswalim.org>

FAO SWALIM Technical Partners:



SWALIM is Managed by FAO and Currently Funded by:

