

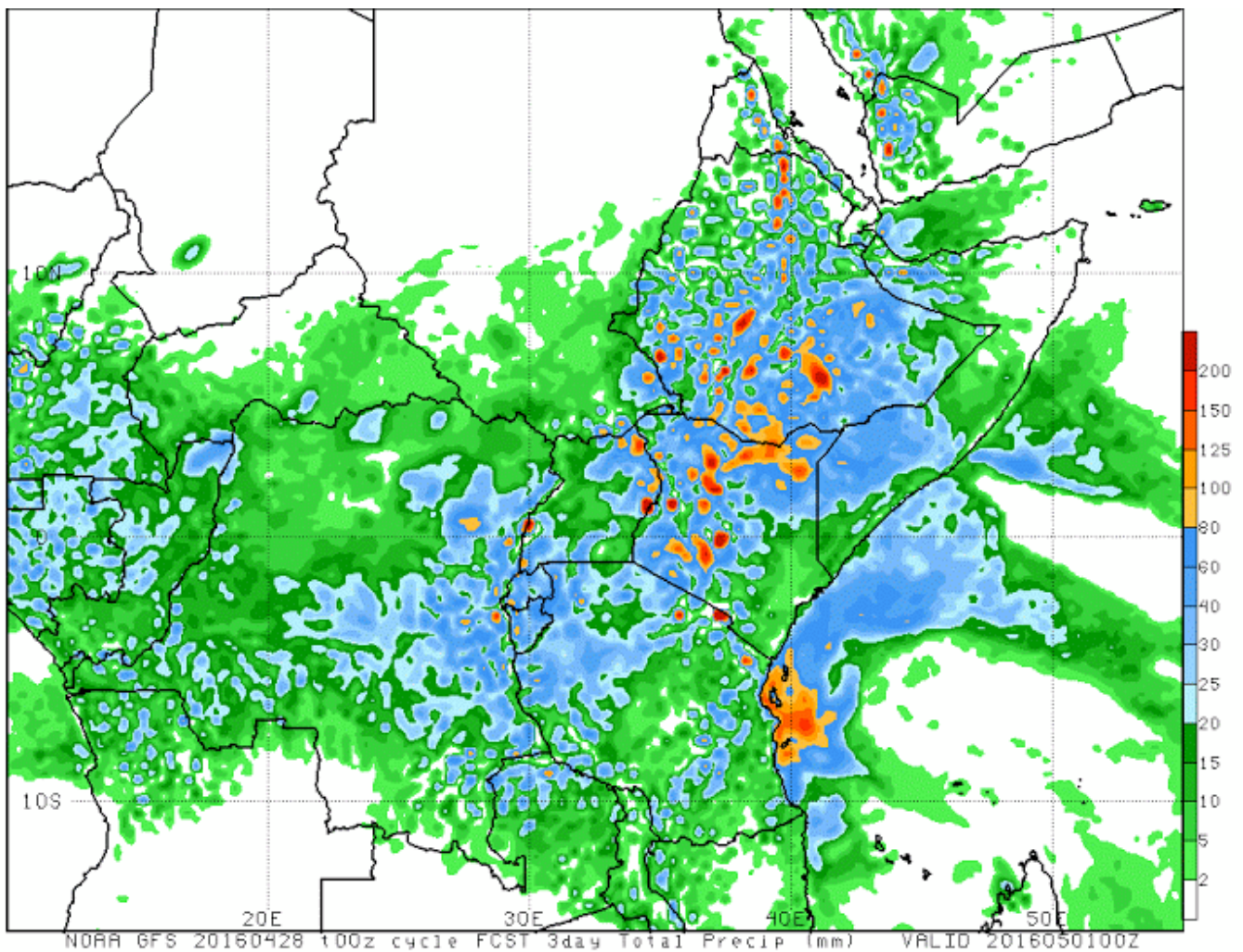
# Rainfall Forecast Somalia

**Issued: 30/04/2016**

The last 24 hours have seen heavy rains within the Juba and Shabelle basins both in Ethiopia and Somalia. This has led to a drastic increase of river levels along the two rivers. Today the river level at Luuq along Juba is 6.10m which above the **high risk** of flooding. River flooding have reported in Luuq area and the surrounding.

The three days rainfall forecast is calling for more rains in the basins. Given the rainfall forecast and the rising levels there is a **high risk** of flooding along the Juba River as well as the Middle and Lower reaches of Shabelle River in the coming days.

### 3-day accumulated rainfall forecast (30/04/2016 to 02/05/2016)



Each cell on the map represents the forecasted accumulated rainfall over the next 72 hours

The full forecast grid is available for download at [http://www.cpc.ncep.noaa.gov/products/international/cpci/data/00/fcsts\\_eafrica.shtml](http://www.cpc.ncep.noaa.gov/products/international/cpci/data/00/fcsts_eafrica.shtml)

This update is produced by the: FAO - Somalia Water and Land Information Management—SWALIM. For more information regarding this product please contact [SO-hydro@fao.org](mailto:SO-hydro@fao.org) or visit <http://www.faoswalim.org>

#### SWALIM Technical Partners



#### SWALIM Funding Agencies

