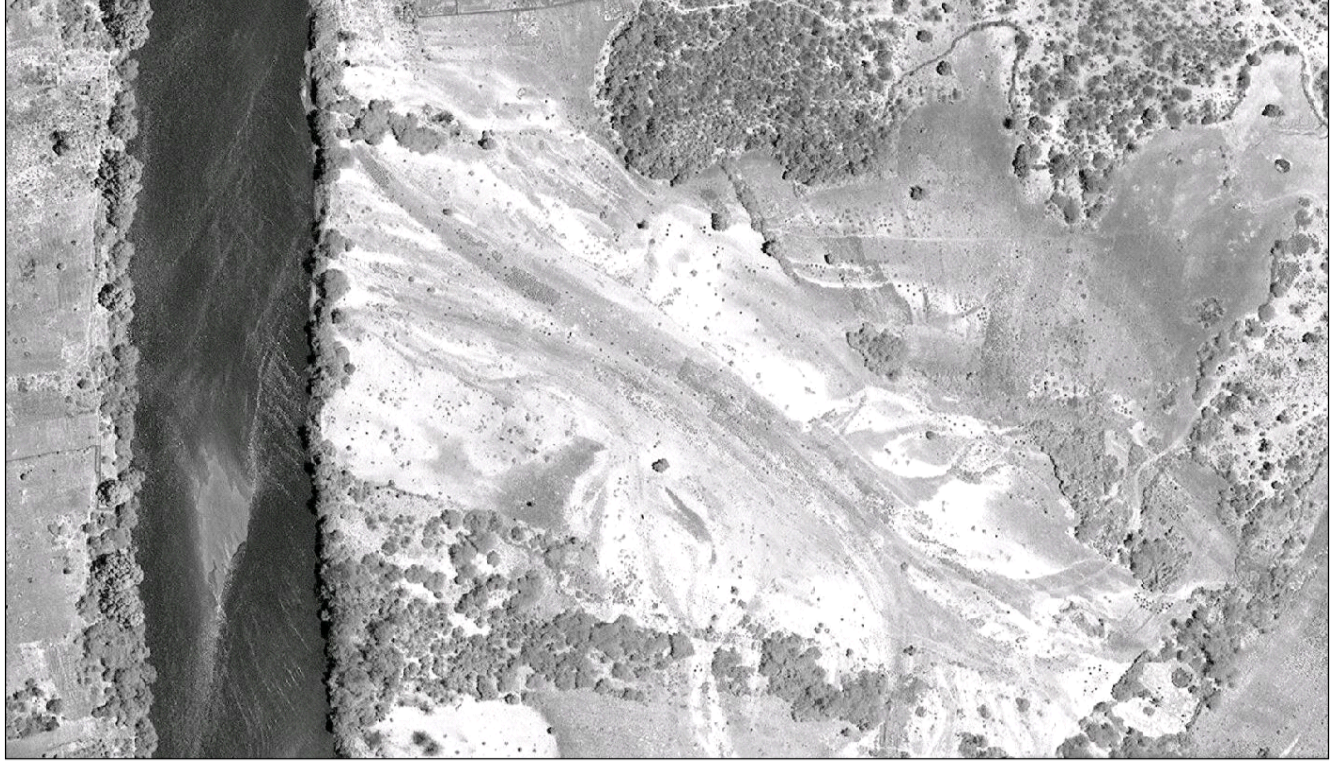


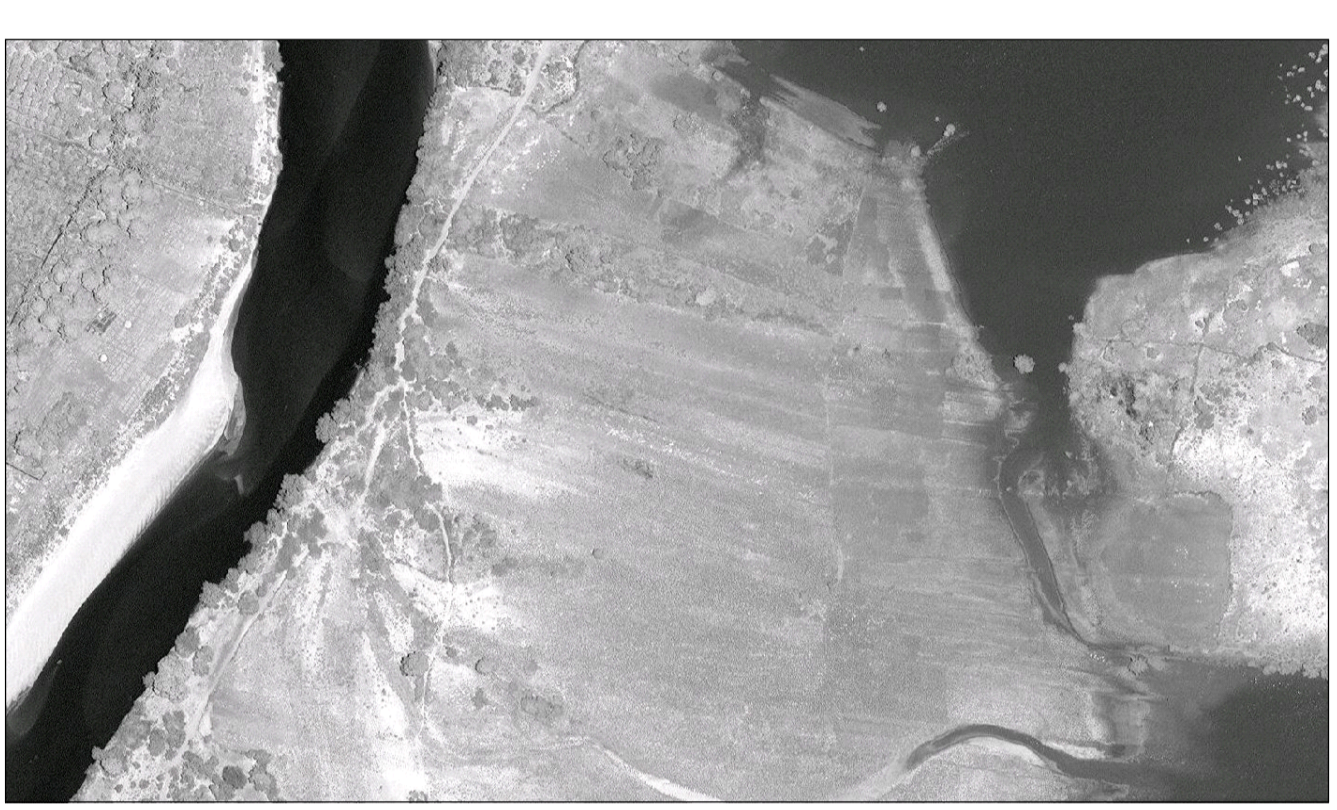
# Status of River Juba Breakages. Reported observations & VHR images (as of July 2015)



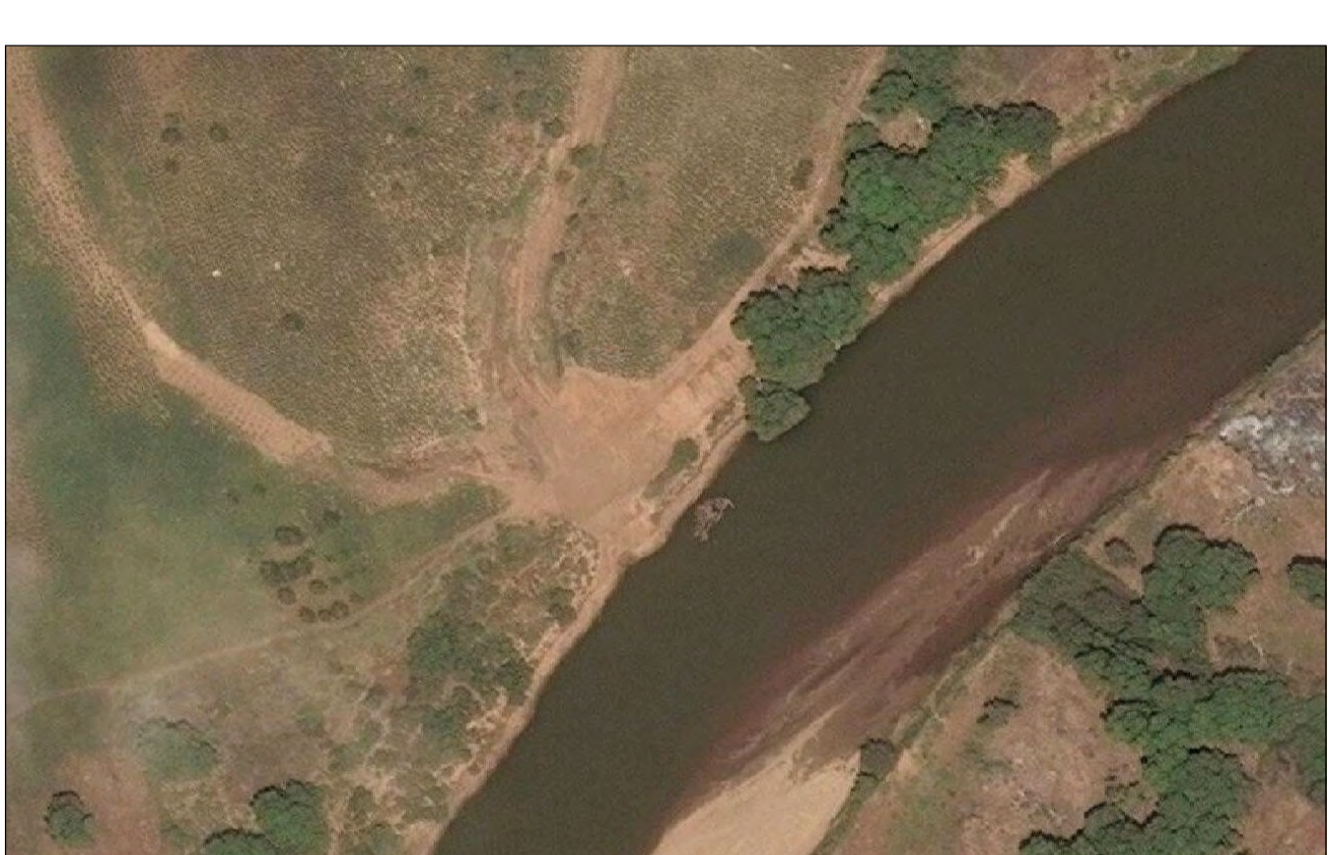
Bardheere (29 APR 15) - There is a breakage at this point and the settlements in the town of Bardheere are barely 20m from this point. Vegetation has been cleared at this point, increasing its vulnerability to flooding.



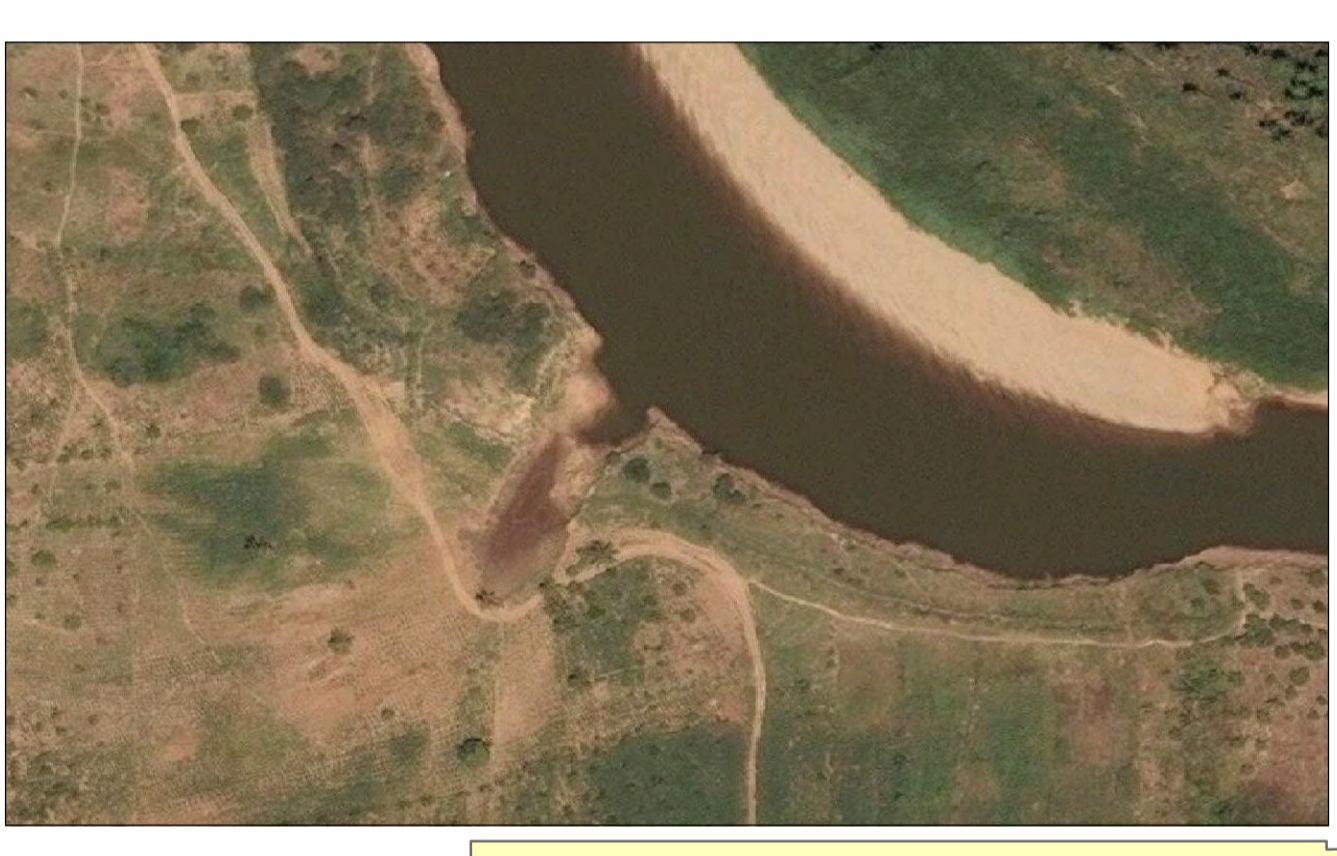
Sakow (07 Mar 15) - The breakage is still open as reported in march field observation. Lack of vegetation at this point makes it more vulnerable to flooding.



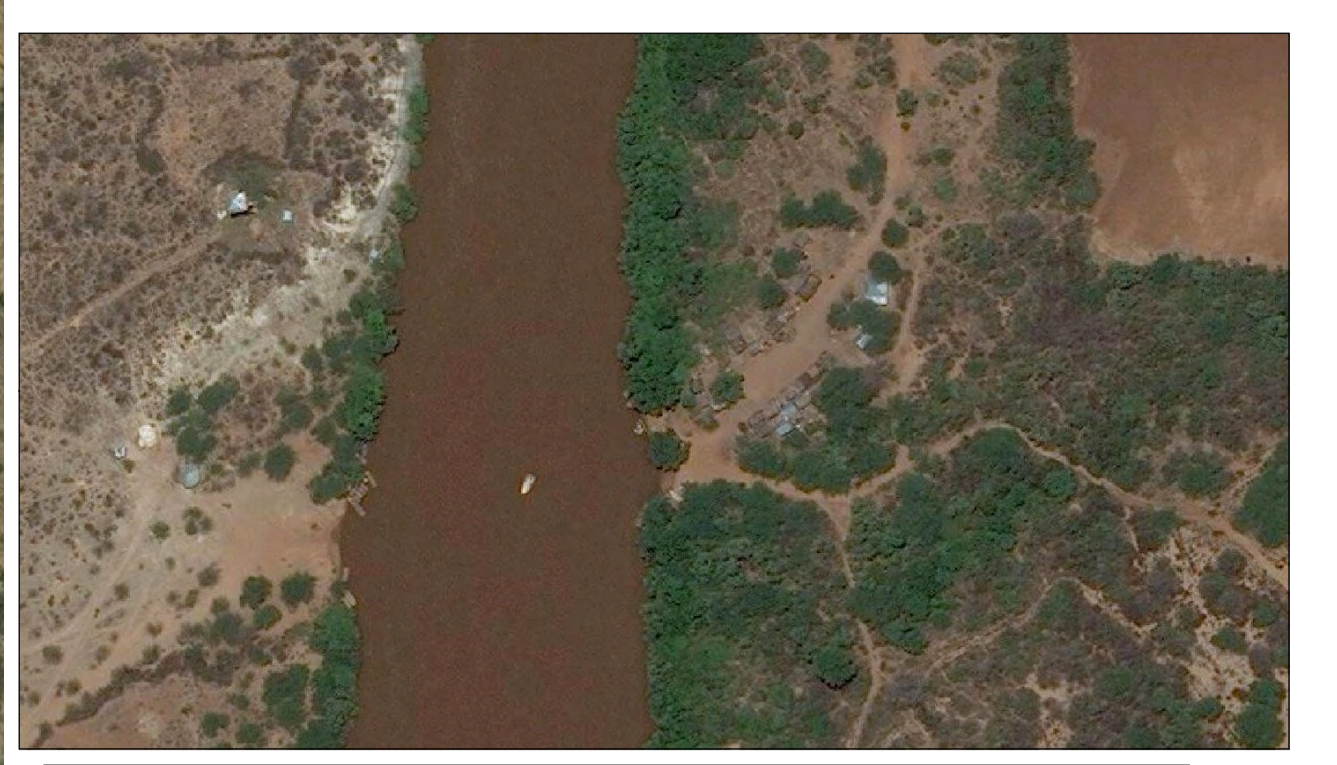
Sakow\_Farta (23 Feb 15) - FROM FIELD OBSERVATION



lidow (12 Feb 15) - Flood residue is still evident in this area with the flood water originating from this point. Vegetation has also been cleared at this point. No village in the vicinity.



Osman Moto (12 Feb 15) - FROM FIELD OBSERVATION



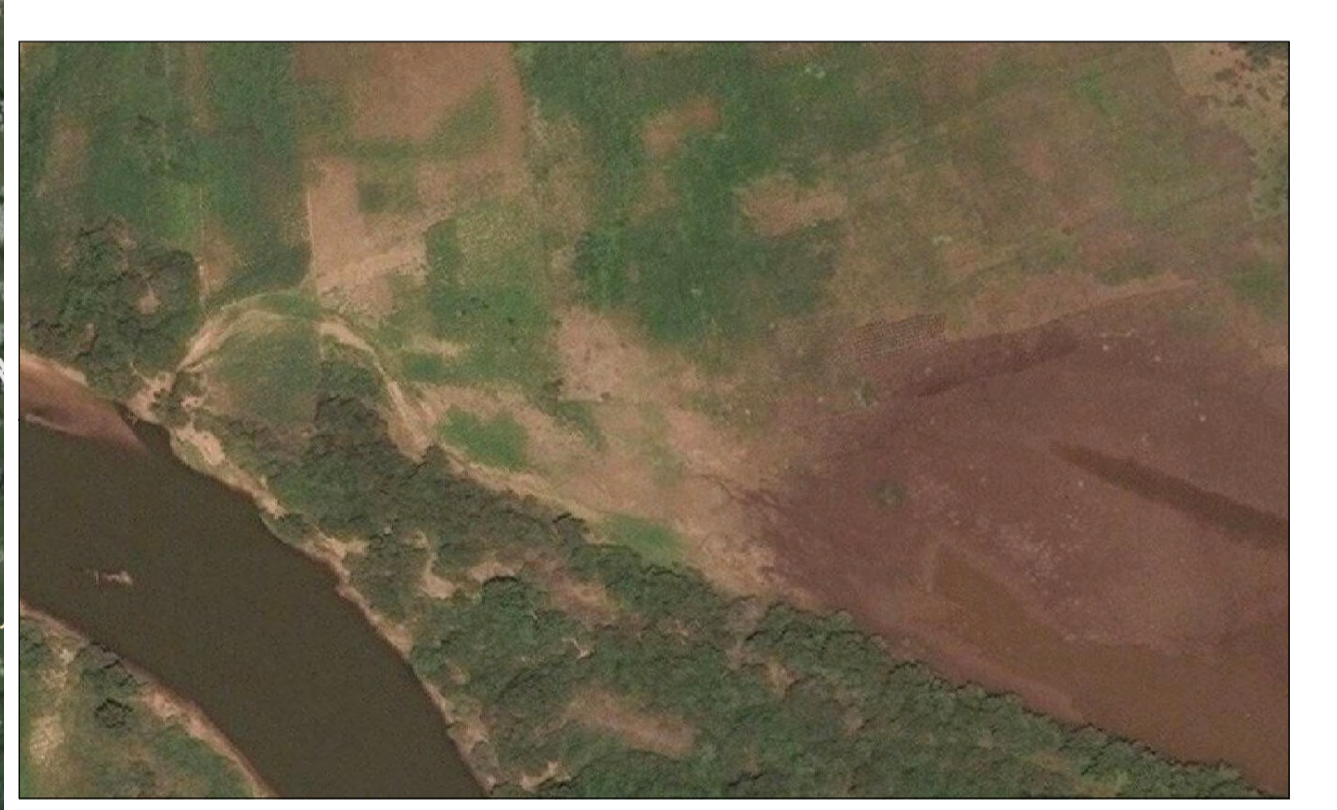
Salagle (17 Sep 13) - The river is broken at this point and vegetation cleared. The village is about 30m from the river and is highly vulnerable to flooding in case river levels rise.



Gola (23 Feb 15) - Breakage is still open



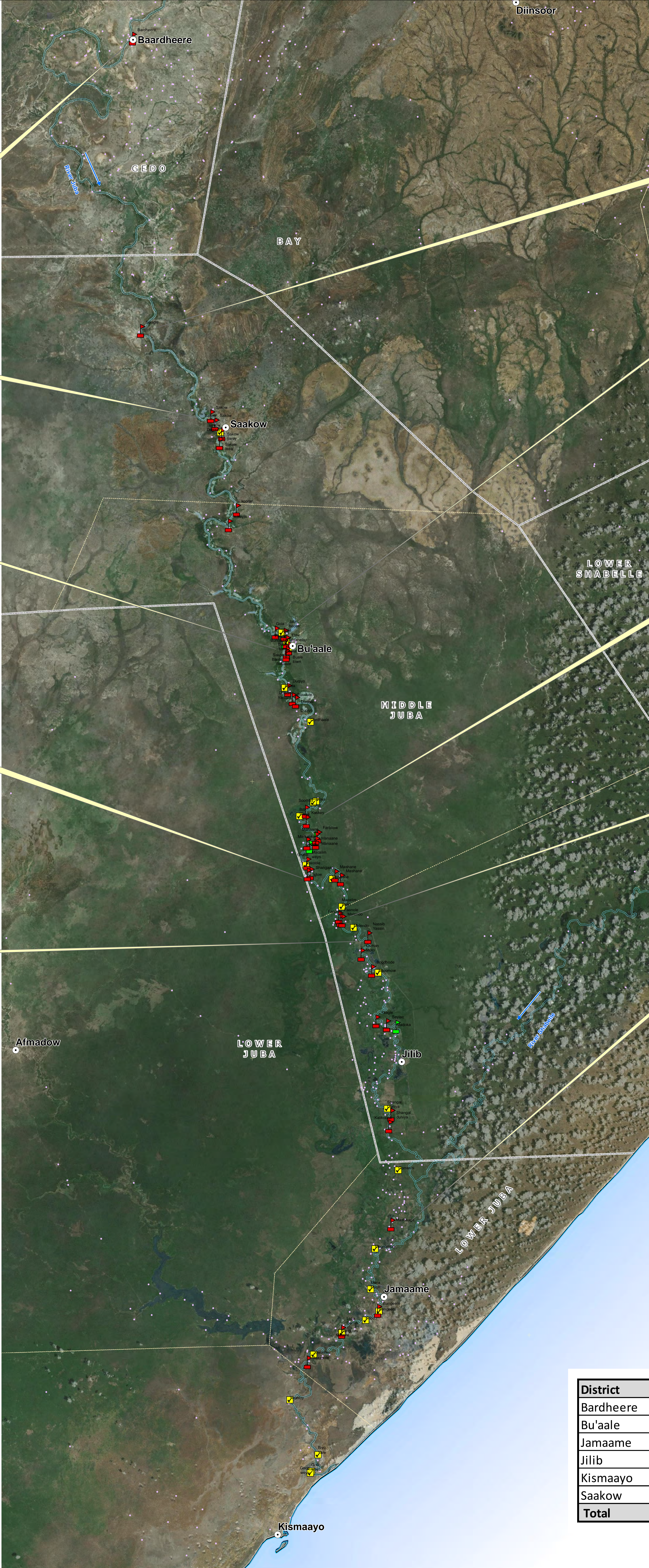
Kaskay (12 Feb 15) - The river bank is broken at this point. There are signs of previous flooding originating from this point. However, there is no village atleast 1km from this point.



Malendo (12 Feb 15) - FROM FIELD OBSERVATION



Mashaaga (25 Jun 15) - The river bank is broken at this point with water spilling out probably to irrigate the nearby farm land.

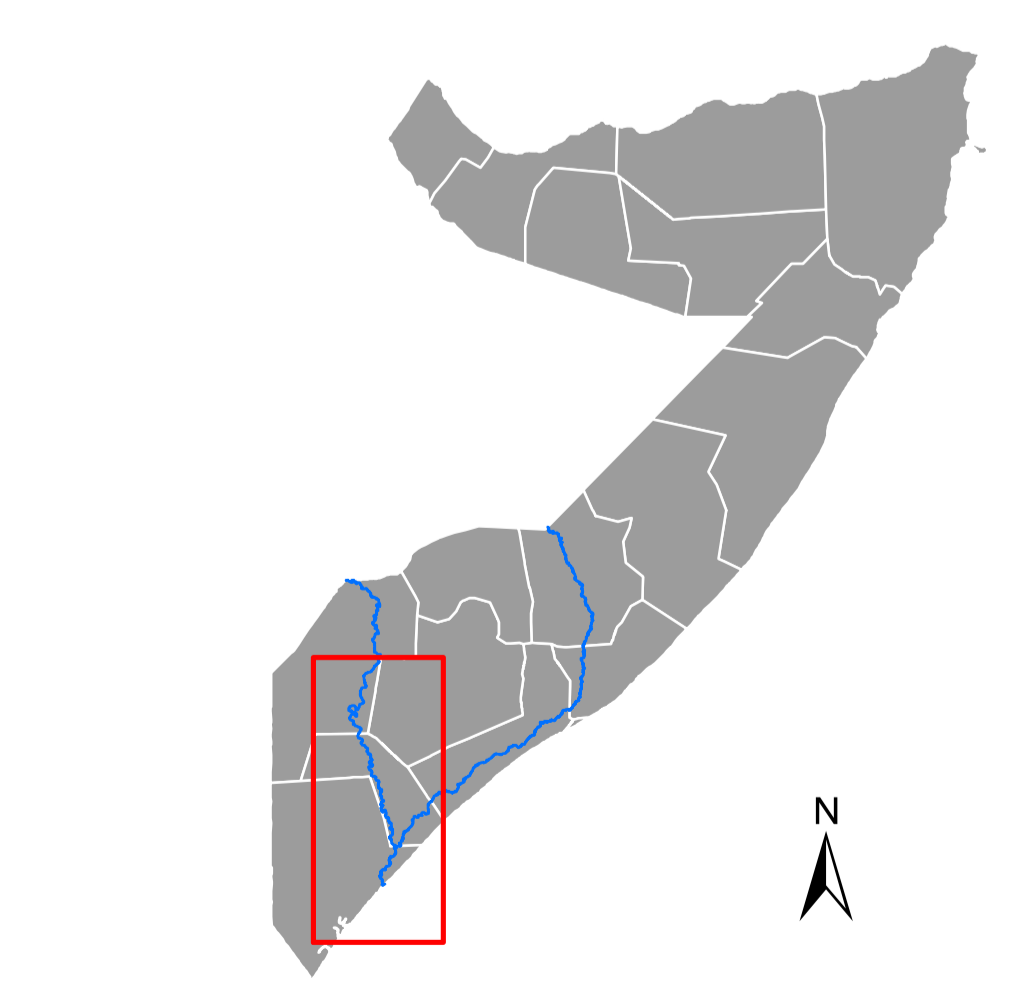


**Legend**

- Settlement
- Major town
- River Shabelle
- District boundary
- Regional boundary

**Breakages**

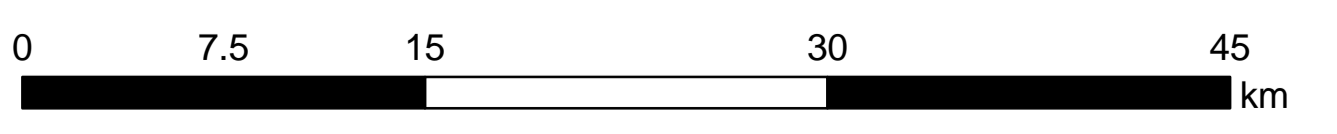
- Open
- Closed
- Potential



Map Ref.: WAT-JUBA-BREAKAGES-STATUS-AUG2015-20150804-A0-001  
 Map Produced by: The Somalia Water and Land Information Management Project (SWALIM).  
 SWALIM is implemented by the United Nations Food & Agriculture Organization and is funded by the European Commission.



District	Open	Potential	Closed
Bardheere	1		
Bu'aale	23	11	4
Jamaame	4	8	
Jilib	11	3	1
Kismaayo		4	
Sakow	8	1	
<b>Total</b>	<b>47</b>	<b>27</b>	<b>5</b>



Source: Esri, DigitalGlobe, GeoEye, iSatellite, Earthstar Geographics, CNES/Airbus DS, USDA, USGS, AEX, Geomatics, AeroGRID, IGN, IGP, swisstopo, and the GIS User Community