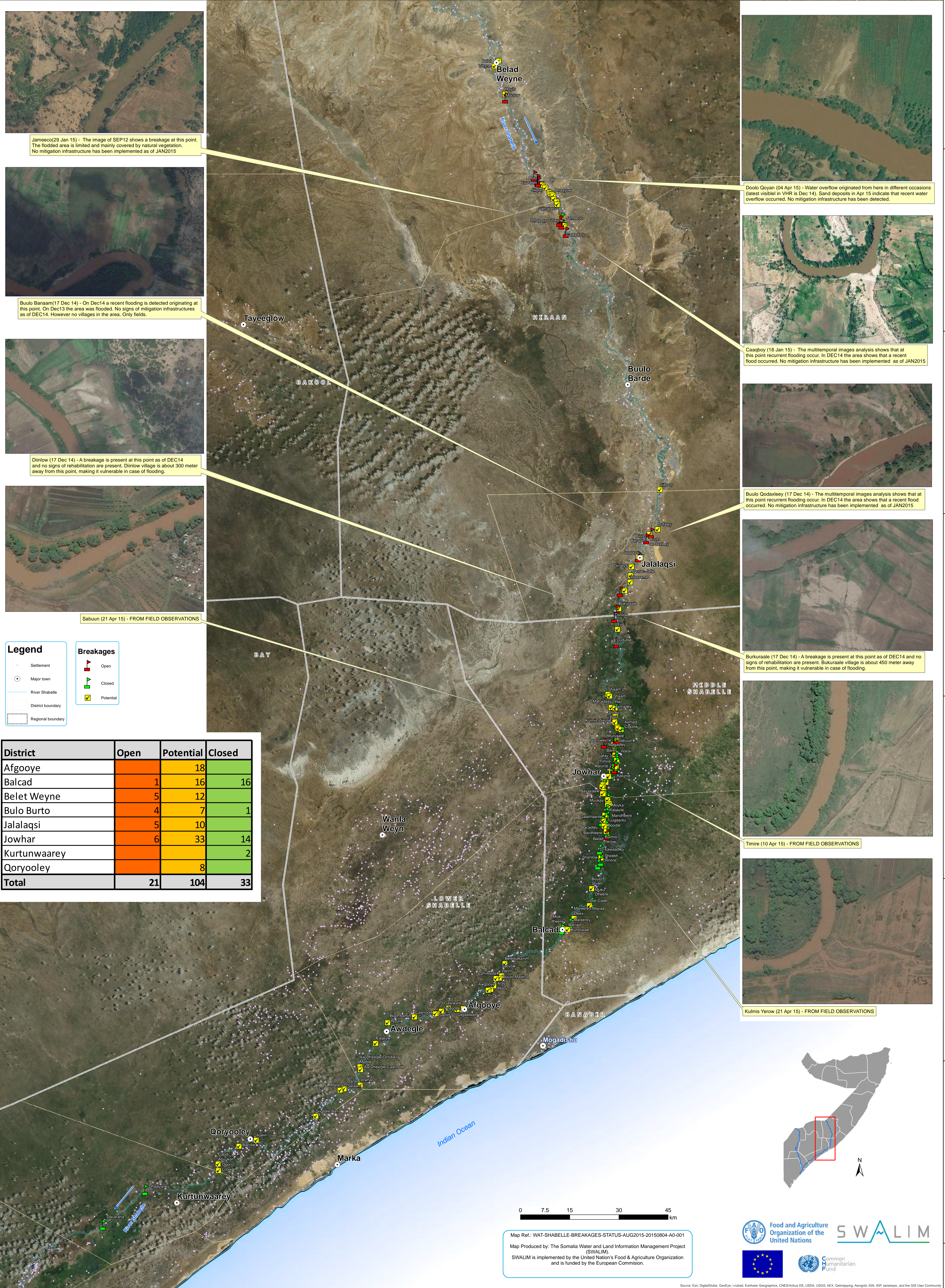


# Status of River Shabelle Breakages. VHR Images (as of July 2015)



Jameeco (29 Jan 15) - The image of SEP12 shows a breakage at this point. The flooded area is limited and mainly covered by natural vegetation. No mitigation infrastructure has been implemented as of JAN2015

Buulo Banaam (17 Dec 14) - On Dec14 a recent flooding is detected originating at this point. On Dec13 the area was flooded. No signs of mitigation infrastructures as of DEC14. However no villages in the area. Only fields.

Dinlow (17 Dec 14) - A breakage is present at this point as of DEC14 and no signs of rehabilitation are present. Dinlow village is about 300 meter away from this point, making it vulnerable in case of flooding.

Sabuun (21 Apr 15) - FROM FIELD OBSERVATIONS

Doolo Ooyan (04 Apr 15) - Water overflow originated from here in different occasions (latest visible in VHR is Dec 14). Sand deposits in Apr 15 indicate that recent water overflow occurred. No mitigation infrastructure has been detected.

Caagbooy (18 Jan 15) - The multitemporal images analysis shows that at this point recurrent flooding occur. In DEC14 the area shows that a recent flood occurred. No mitigation infrastructure has been implemented as of JAN2015

Buulo Qodaxley (17 Dec 14) - The multitemporal images analysis shows that at this point recurrent flooding occur. In DEC14 the area shows that a recent flood occurred. No mitigation infrastructure has been implemented as of JAN2015

Burkuraale (17 Dec 14) - A breakage is present at this point as of DEC14 and no signs of rehabilitation are present. Burkuraale village is about 450 meter away from this point, making it vulnerable in case of flooding.

Timire (10 Apr 15) - FROM FIELD OBSERVATIONS

Kulmis Yerow (21 Apr 15) - FROM FIELD OBSERVATIONS

**Legend**

- Settlement
- Major town
- River Shabelle
- District boundary
- Regional boundary

**Breakages**

- Open
- Closed
- Potential

District	Open	Potential	Closed
Afgooye	18	16	16
Balcad	1	7	1
Belet Weyne	5	12	12
Bulo Burto	4	7	1
Jalalaqsi	5	10	14
Jowhar	6	33	2
Kurtunwaarey	8	2	2
Qoryooley	21	104	33
<b>Total</b>	<b>21</b>	<b>104</b>	<b>33</b>

Map Ref.: WAT-SHABELLE-BREAKAGES-STATUS-AUG2015-20150804-A0-001  
 Map Produced by: The Somalia Water and Land Information Management Project (SWALIM).  
 SWALIM is implemented by the United Nation's Food & Agriculture Organization and is funded by the European Commission.

Source: Esri, DigitalGlobe, GeoEye, iSatellite, Earthstar Geographics, CNES/Airbus DS, USDA, USGS, AeroGRID, IGN, IGP, swisstopo, and the GIS User Community