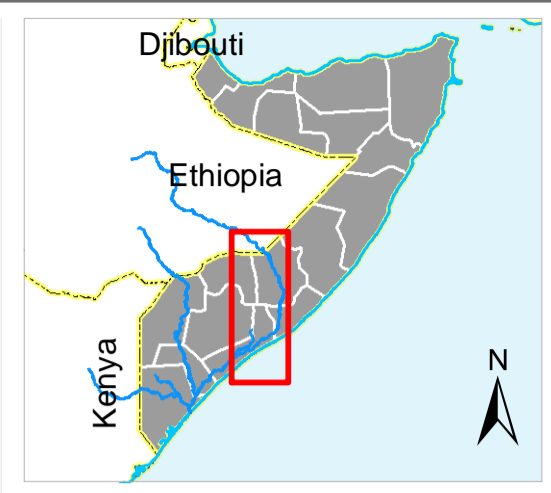


# Status of Breakages along the River Shabelle (March 2017)

Open River Breakages in Shabelle as of March 2017			
District	Nearest Settlement	Status	Riverbank Side
Kurtunwaarey	Towfiik	Open	Right
Kurtunwaarey	Towfiik	Open	Left
Kurtunwaarey	Towfiik	Open	Left
Jalalaqsi	Dirgoys	Open	Left
Afgooye	Berta Cali Haji	Open	Right
Balcad	Bardheere	Open	Left
Balcad	War-Gaab	Open	Left
Balcad	Muku Dheere	Open	Left
Balcad	Bacadley	Open	Right
Belet Weyne	Belet Weyne	Open	Left
Afgooye	Bariire	Open	Right
Qoryooley	Buulo-Maxamed Cumar	Open	Left
Qoryooley	Sadiiq	Open	Left
Afgooye	Raqeyle	Open	Left
Jowhar	Baaroweyne	Open	Left
Kuntuwaaray	Aflow	Open	Right
Kurtunwaarey	Gees	Open	Right
Kurtunwaarey	Garas-Baxaar	Open	Left



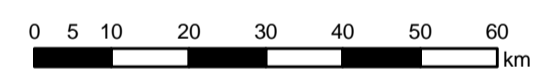
Satellite data: WV2/WV3 images  
 Imagery dates: Sep 2016 - March 2017  
 Imagery resolution: 30 cm - 50 cm  
 Imagery source: USGS  
 Other dataset: UNDP, FAO-SWALIM  
 Analysis: FAO-SWALIM  
 Software: ArcGIS v10.2.1

## Status of River Breakages

- Open (18)
- ▲ Potential (145)
- ▲ Closed with Sand bags (82)

## Legend

- Major town
- Settlement
- ▬ Major river
- ▬ Minor road
- ▬ Major road
- ▭ District boundary



Map Reference: WAT-BREAKAGES-SHABELLE-March2017-20170308-A3-001

Map Produced by: The Somalia Water and Land Information Management Project (SWALIM).  
 SWALIM is implemented by the United Nation's Food & Agriculture Organization and is funded by the European Commission with co-funding provided by CHF and USAID.

The boundaries and names on this map do not imply official endorsement or acceptance by the United Nations.

For copies of digital data please contact: [swalim@fao.org](mailto:swalim@fao.org)

Map projection: Geographic Coordinates, WGS 84 datum.

