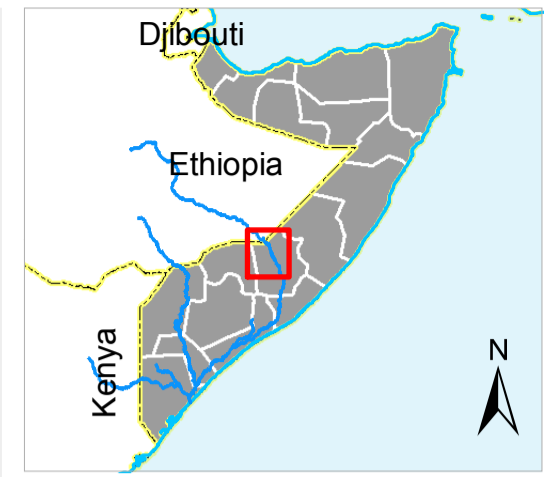
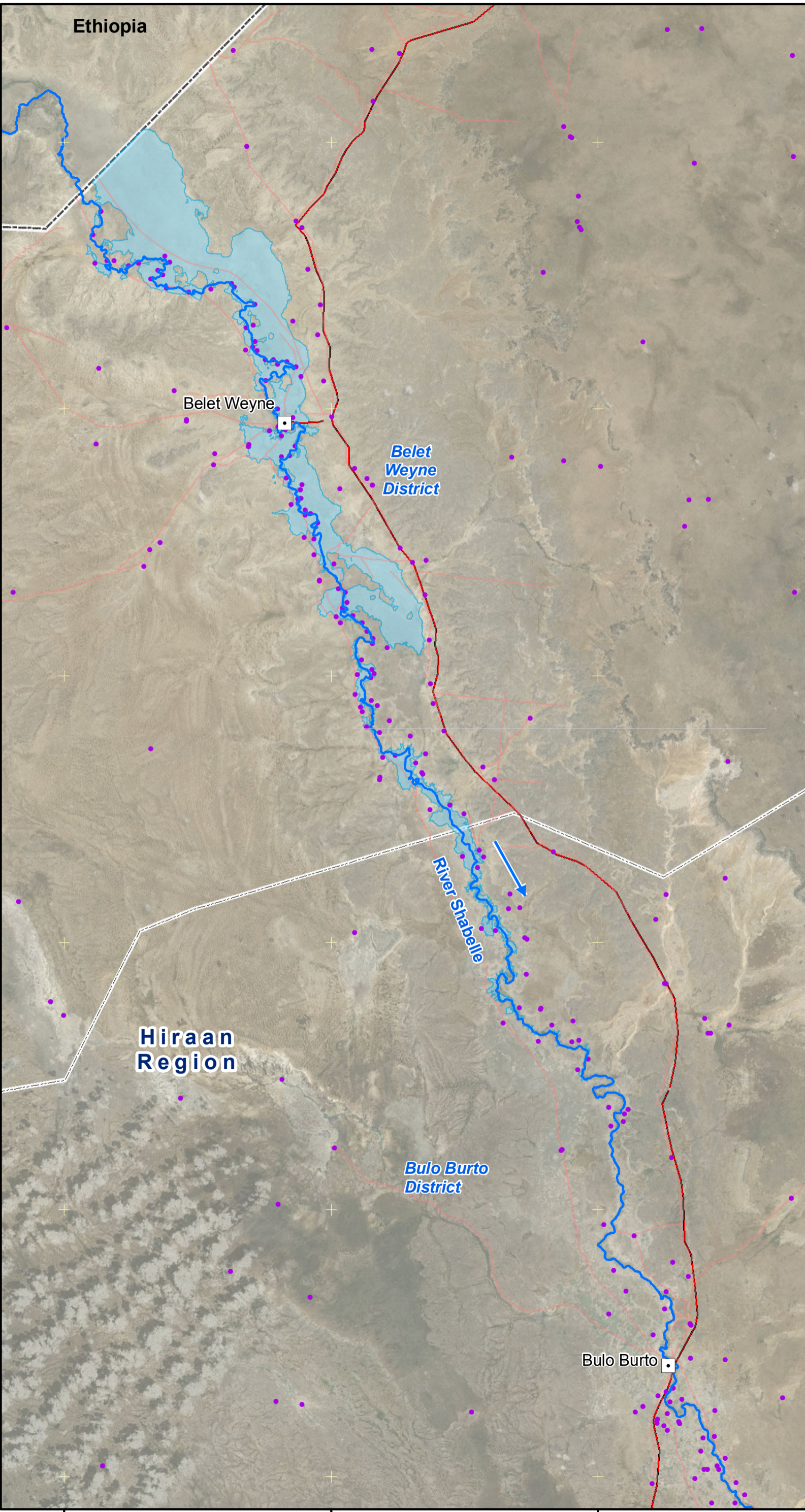


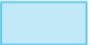
Belet Weyne District Floods

Reported observation and Sentinel-2 image analysis (25 May 2016)









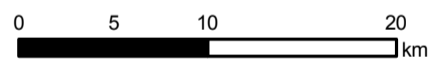
Satellite data: Sentinel-2 image
 Imagery dates: 25 May 2016
 Imagery resolution: 10 m
 Imagery source: European Space Agency (ESA)
 Other dataset: UNDP, FAO-SWALIM
 Analysis: FAO-SWALIM
 Software: ArcGIS v10.3

Floods - 25 May 2016

 Flooded area (37,700 Ha)

Legend

-  Major town
-  Settlement
-  Major river
-  Minor road
-  Major road
-  District boundary



Map Reference: WAT-BREAKAGES-BWEYNE-25MAY2016-20160606-A0-001

Map Produced by: The Somalia Water and Land Information Management Project (SWALIM).
 SWALIM is implemented by the United Nation's Food & Agriculture Organization and is funded by the European Commission with co-funding provided by CHF and USAID.

The boundaries and names on this map do not imply official endorsement or acceptance by the United Nations.

For copies of digital data please contact: swalim@fao.org

Map projection: Geographic Coordinates, WGS 84 datum.

